



21 Freya House London Road, Old Basing – RG24 7JL

£140,000 Leasehold

Service Charge £40.24 p/a • Lease Remaining 115 Years • Ground Rent £304.54 p/a • Council Tax Band A • EPC C
• Spacious Double Bedroom • First Floor Apartment • Attractive Views over the River Lyde • Allocated Parking Space • Underfloor Heating Throughout

01256 321777

www.thepropertyexplorer.co.uk

the property
explorer

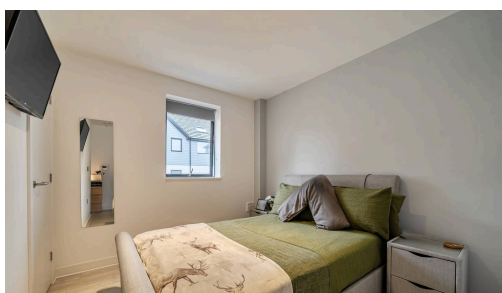
Explorer are delighted to bring to the market this luxurious first-floor apartment, ideally positioned in the heart of Old Basing within Freya House, a modern conversion offering contemporary living in a charming village setting.

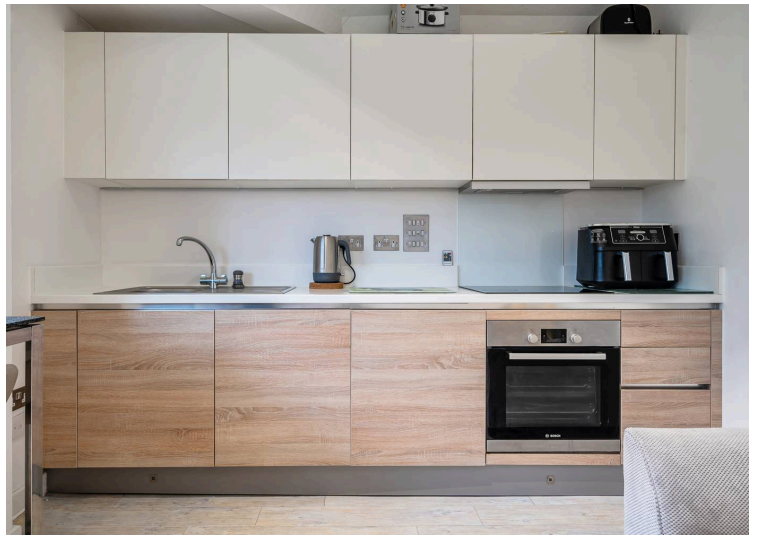
Council Tax band: C

Tenure: Leasehold



- › Service Charge £40.24 p/a
- › Lease Remaining 115 Years
- › Ground Rent £304.54 p/a
- › Council Tax Band A
- › EPC C
- › Spacious Double Bedroom
- › First Floor Apartment
- › Attractive Views over the River Lyde
- › Allocated Parking Space
- › Underfloor Heating Throughout

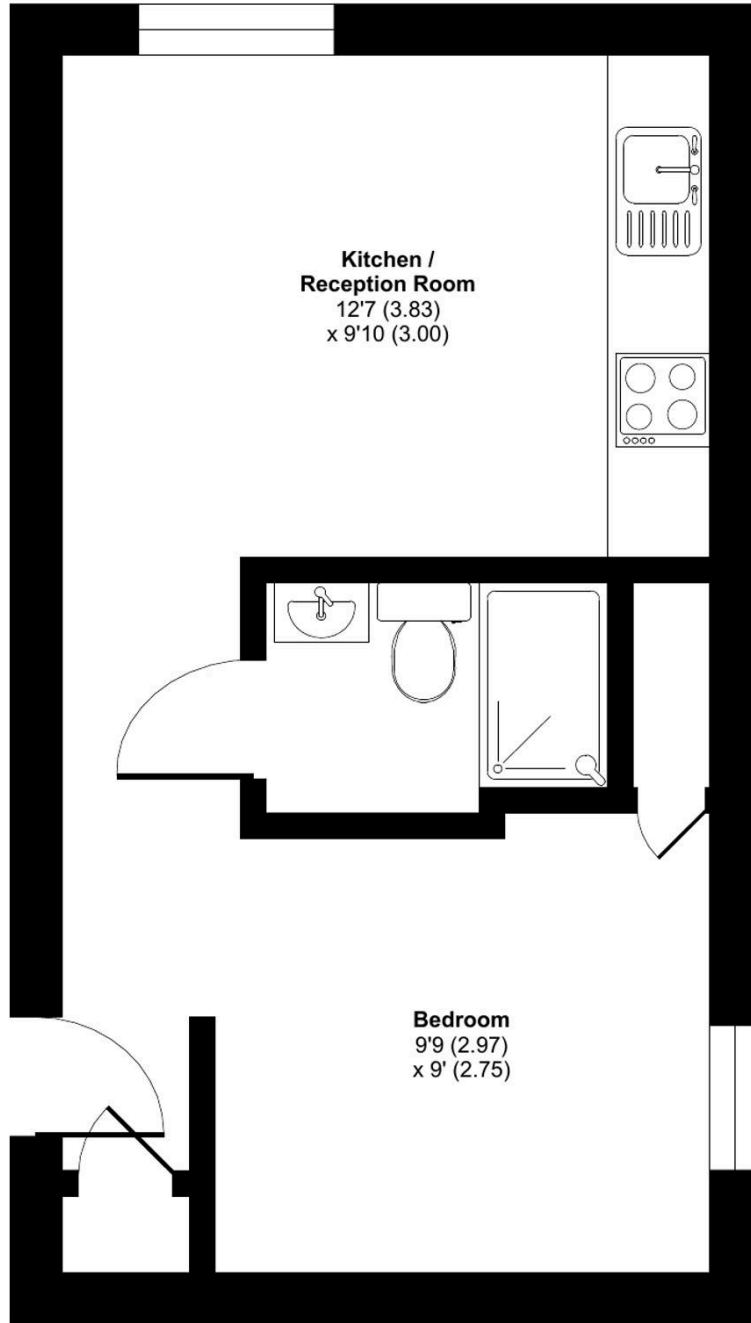




London Road, Old Basing, Basingstoke, RG24

Approximate Area = 301 sq ft / 27.9 sq m

For identification only - Not to scale



FIRST FLOOR



Floor plan produced in accordance with RICS Property Measurement 2nd Edition, Incorporating International Property Measurement Standards (IPMS2 Residential). © nchecom 2026. Produced for Property Explorer. REF1408046

You can include any text here. The text can be modified upon generating your brochure.