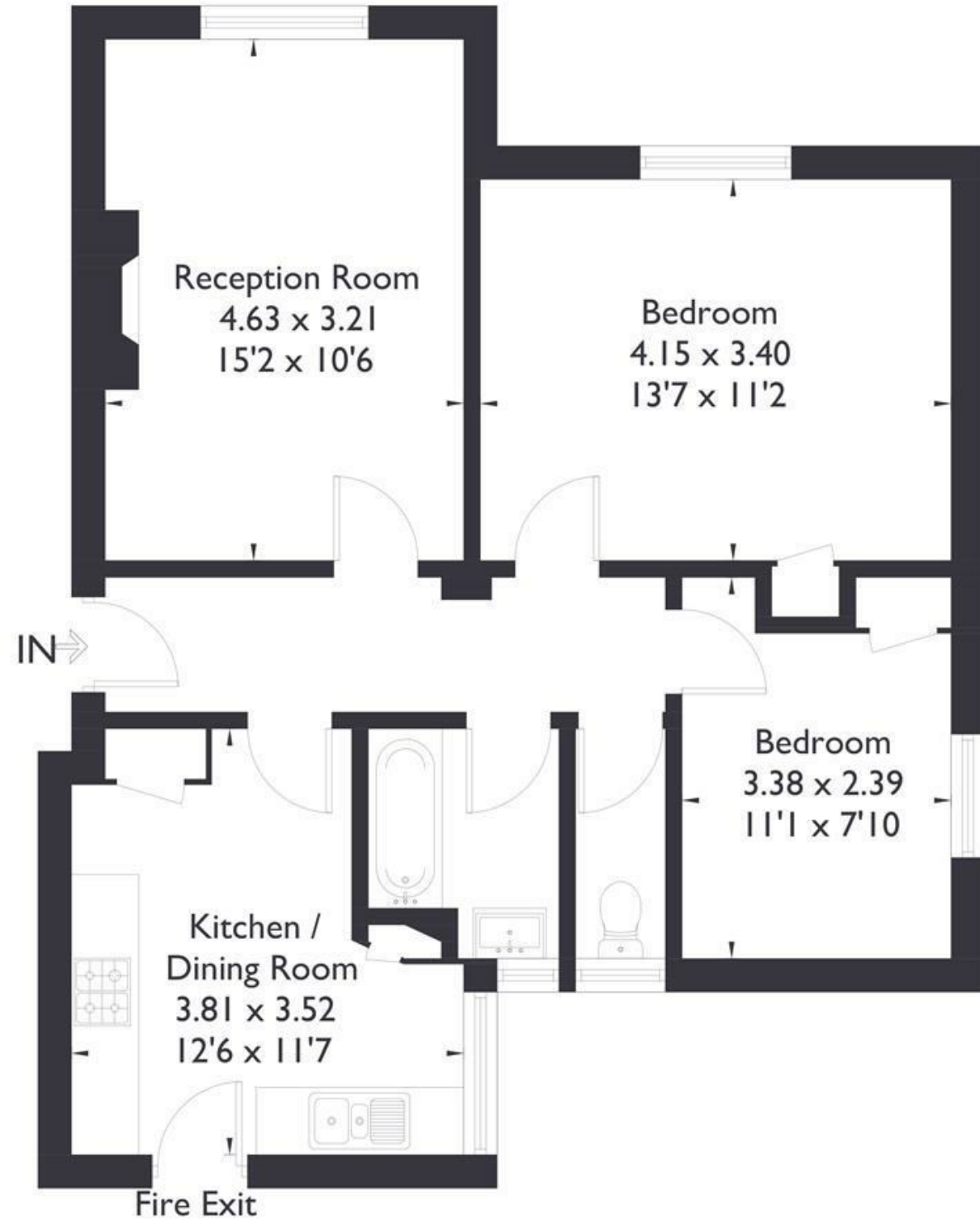


Montpelier Road, W5

Approximate Floor Area = 63.2 sq m / 680 sq ft



**Second Floor**



APARTMENT

FEATURES

**Montpelier Road W5**  
£1,995 PCM

APARTMENT

# Montpelier Road W5

£1,995 PCM

Beautiful Art-Deco building surrounded by greenery and nestled just off the most sort after Montpelier road area of Ealing. Situated close to Ealing Broadway shops, restaurants and multiple transport links.

The Accommodation comprises eat in fitted kitchen, lounge with feature fireplace, two double bedrooms and bathroom with shower. Other benefits include entry phone system and off street parking.

