



Abbey Road, NW8

£392 Per week

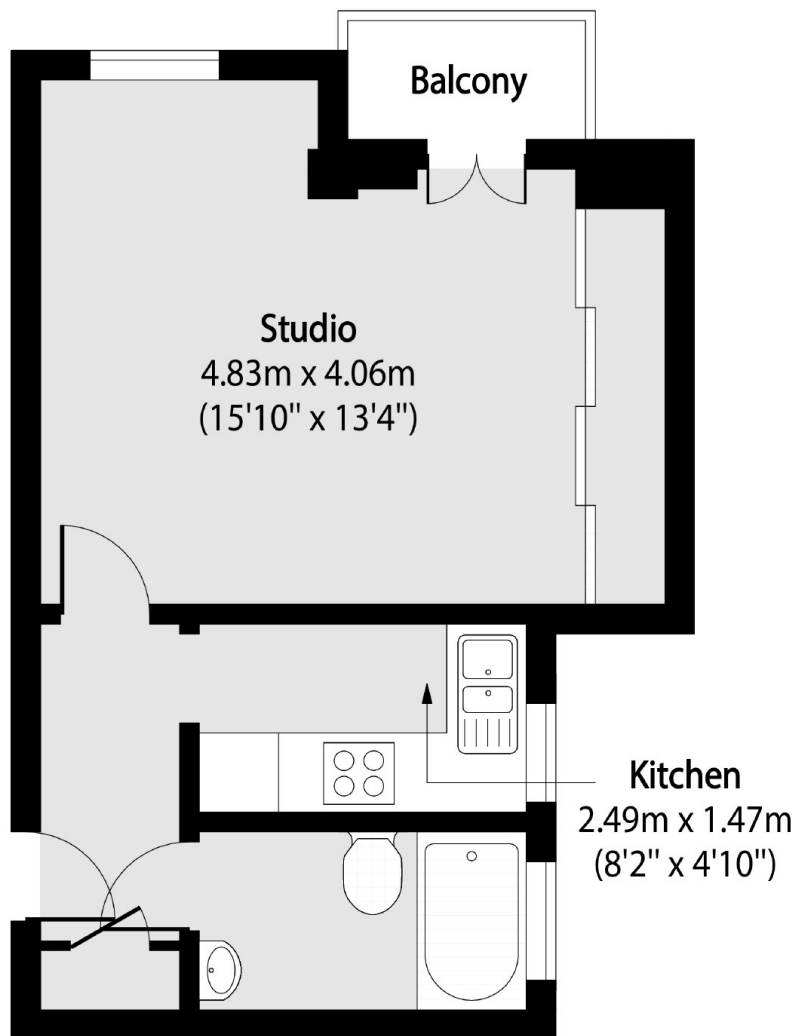
Bright and well-proportioned studio set within the popular Neville Court in St John's Wood. The property features a spacious living/sleeping area, a separate fully fitted kitchen, and a modern bathroom and a balcony

Situated in a well-maintained portered block with lift access, just moments from Regent's Park and St John's Wood Underground Station (Jubilee Line), with shops and cafes nearby.

Features

- Studio Flat
- Separate Kitchen
- Porter
- Balcony
- Wooden Floors
- Lift

Abbey Road, London, NW8



Total area (approx): 28.89 sq m (311 sq. ft)

Balcony total area (approx): 1.67 sq m (18 sq. ft)