



Your Logo

# 6, Summerhouse Court Headley Road, Grayshott

£80,000

🛏️ 1 🚿 1 🚗 1

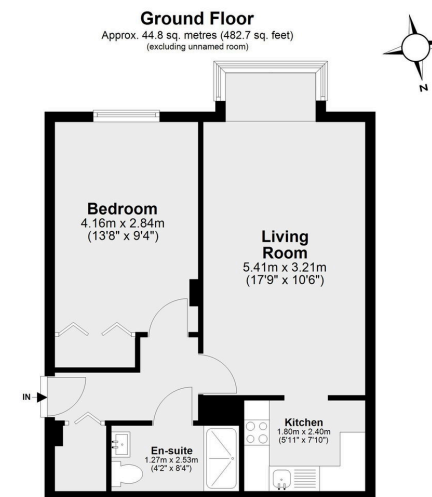


- One-bedroom ground floor retirement apartment
- South-facing aspect
- Good decorative order throughout
- Part-time house manager and 24-hour emergency call system
- Village centre location within Grayshott
- Age restriction: residents must be aged 60+
- Bedroom with fitted wardrobes
- Updated shower room with walk-in shower
- Communal laundry room and residents' garden
- Leasehold flat





A one-bedroom retirement apartment (age restriction applies) offered in good decorative order, with a south-facing aspect and access to a communal patio area. Conveniently positioned within Grayshott village, close to local shops and amenities.



Total area: approx. 44.8 sq. metres (482.7 sq. feet)

This plan has been produced by E Property Marketing for illustrative purposes only and should be used as such by any prospective purchaser. Whilst every effort has been made to ensure the accuracy of this plan, measurements of doors, windows, rooms, and other items are approximate. No responsibility is taken for any error, omission, or misstatement.

Energy Efficiency Rating		
	Current	Potential
<i>Very energy efficient - lower running costs</i>		
(92 plus) <b>A</b>		
(81-91) <b>B</b>		
(69-80) <b>C</b>		77
(55-68) <b>D</b>	67	
(39-54) <b>E</b>		
(21-38) <b>F</b>		
(1-20) <b>G</b>		
<i>Not energy efficient - higher running costs</i>		
<b>England &amp; Wales</b>	EU Directive 2002/91/EC	