



67 Beach Road, Caister-On-Sea

Great Yarmouth



Minors & Brady

# 67 Beach Road

## Caister-On-Sea, Great Yarmouth

Set in a fantastic coastal position with direct access to the sandy beach and dunes, this beautifully updated cottage is full of charm and modern comfort. A generous lounge with exposed beams and a brick fireplace housing a log-burning stove creates a welcoming heart to the home, while the newly fitted kitchen with vaulted ceiling and stylish finishes leads directly to the rear courtyard. Practical touches include a ground-floor WC with plumbing for laundry, and upstairs, the spacious double bedroom connects to a striking en suite bathroom via a character wood sliding door, featuring a claw-foot bath, separate shower, and contemporary fittings. Outside, the south-facing courtyard garden provides a private retreat, complemented by a brick-built outbuilding ideal for a home office or studio, with local shops, cafés, and traditional pubs nearby and Great Yarmouth only a short drive away for wider leisure and entertainment.

### Location

Beach Road in Caister-on-Sea offers a fantastic coastal setting with direct access to the sandy beach and dunes. The area is well-served by everyday amenities, including local shops, cafés, and traditional pubs, while a short drive brings you to Great Yarmouth for a wider selection of leisure and entertainment options. Families will find schools and parks nearby, and there are excellent bus links connecting the village to surrounding towns and Norwich. Residents also enjoy access to local leisure facilities, including a leisure centre and nearby golf courses. The coastline is popular for walking, cycling, and water activities, making it an ideal spot for an active lifestyle. With its friendly community atmosphere and year-round appeal, it is a highly desirable place to live or spend time by the sea.





M&B

# 67 Beach Road

Caister-On-Sea, Great Yarmouth

## Beach Road, Caister-On-Sea

Step inside through the porch, where exposed red brick walls set a welcoming tone and create a sense of character before you even step inside. A dark wooden front door with a glazed panel and letterbox is complemented by a side window that draws in light, while practical tiled flooring makes for an easy-care entrance.

From here, you enter the open-plan living area, a space rich in cottage charm. The beamed ceiling, painted in contrasting tones, immediately catches the eye, while a central brick fireplace with a timber mantel anchors the room. Within the hearth sits a log-burning stove, perfect for cosy evenings. The room is carpeted for comfort, and generous windows allow natural light to flood in, creating an inviting and relaxing atmosphere.

The kitchen extends from the living area, designed to be both smart and functional. Soft-toned cabinetry pairs with wood-effect work surfaces and matching upstands, while a built-in oven and modern extractor provide everyday convenience. The sink is neatly positioned beneath a window, ensuring the space feels bright and connected to the outdoors. A brass-effect mixer tap adds subtle character, and wall-mounted shelving provides useful storage with charm. The wood-effect flooring contrasts neatly with the lighter cabinetry, and a rear door leads directly out to the garden.

Adjoining the kitchen is a ground-floor WC that also serves as a utility space. Finished with patterned floor tiling and a modern towel radiator, it includes plumbing for laundry appliances, making it highly practical. A small window draws in additional light, ensuring the room feels bright and usable.



M&B

# 67 Beach Road

Caister-On-Sea, Great Yarmouth

A timber staircase takes you to the first floor, where a bright landing leads into the principal bedroom. Generous in size, it features sloping ceilings that add to the cottage's character, while multiple windows bring in light from different angles. Natural wood detailing around the doorframes and skirting enhances the décor, giving the room a warm yet airy feel.

Directly adjoining is the en suite bathroom, accessed through a character wood sliding door. Styled with both rustic and modern elements, it features a freestanding claw-foot bath as the centrepiece, set against a feature wall of pebble-effect tiling with timber trim. A separate glass-enclosed shower adds convenience, while the contemporary basin is set on a solid wood stand. The space is completed with a heated towel rail and wood-effect flooring for a cohesive, elegant look.

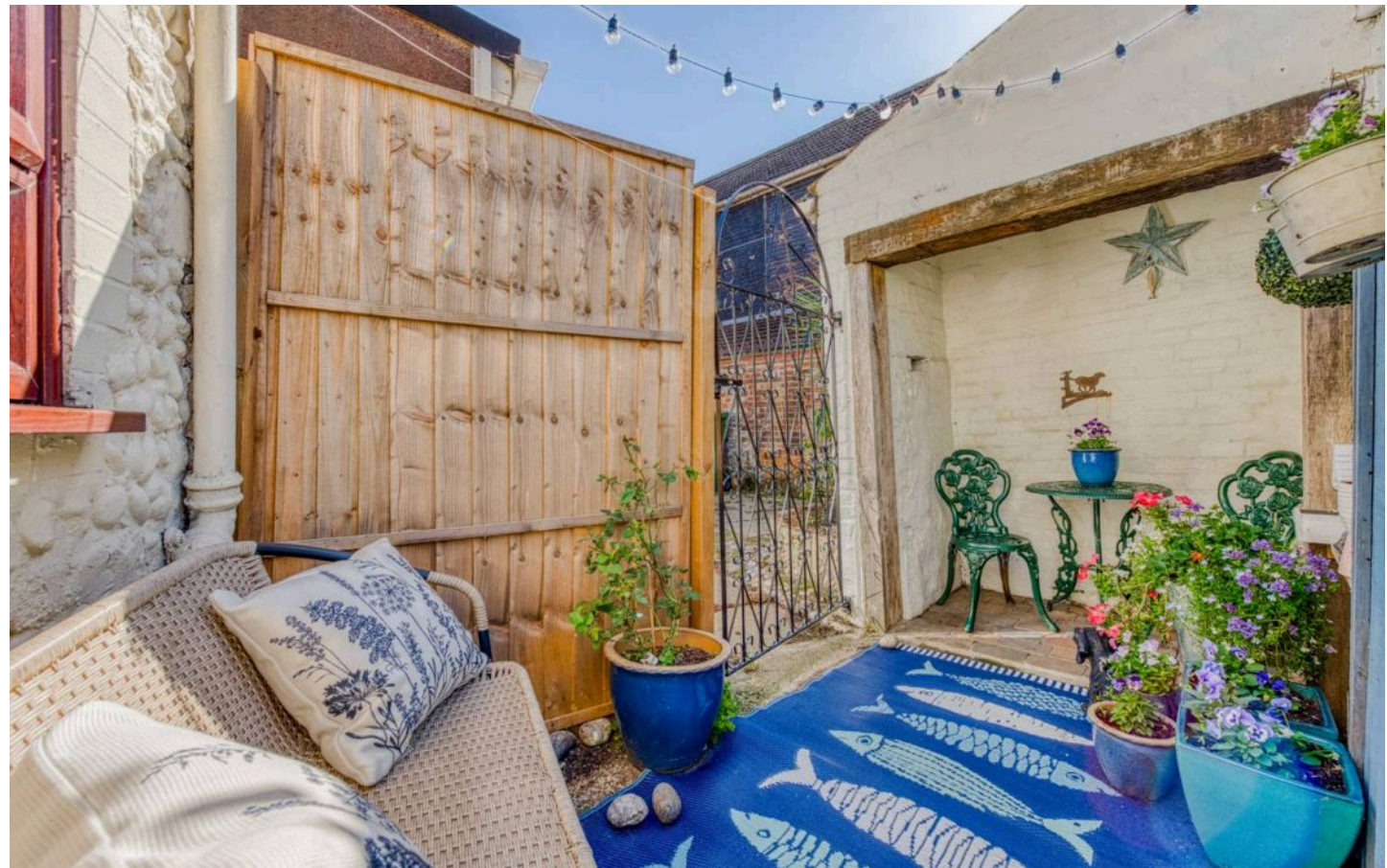
Outside, the property enjoys a south-facing courtyard garden that has been designed with low maintenance in mind, offering a pleasant space to relax. A brick-built outbuilding provides flexibility, ideal for a home office, studio, or additional storage.

### Agents notes

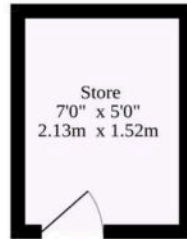
We understand that the property will be sold freehold, with all main services connected.

Heating system- Gas Central Heating

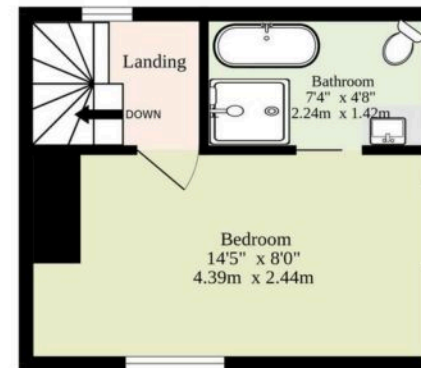
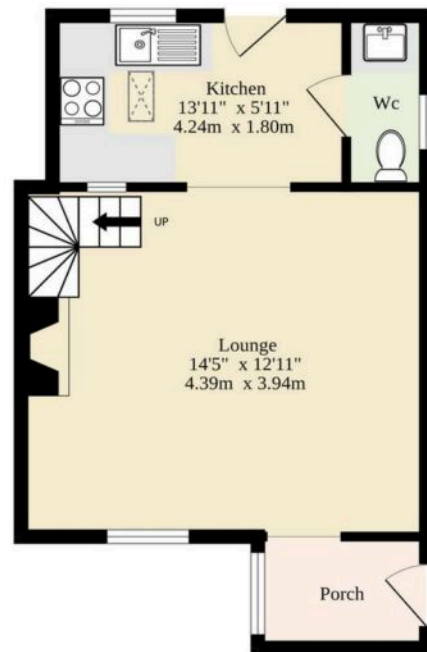
Council Tax Band- A



Ground Floor  
320 sq.ft. (29.7 sq.m.) approx.



1st Floor  
181 sq.ft. (16.8 sq.m.) approx.



Sqft Includes Store

TOTAL FLOOR AREA : 560sq.ft. (52.0 sq.m.) approx.

Whilst every attempt has been made to ensure the accuracy of the floorplan contained here, measurements of doors, windows, rooms and any other items are approximate and no responsibility is taken for any error, omission or mis-statement. This plan is for illustrative purposes only and should be used as such by any prospective purchaser. The services, systems and appliances shown have not been tested and no guarantee as to their operability or efficiency can be given.  
Made with Metropix ©2025

# Dreaming of this home? Let's make it a reality



Meet *Sarah*  
Senior Property Consultant



Meet *James*  
Property Consultant



Meet *Lauren*  
Property Consultant

Minors & Brady  
*Your home, our market*

 [caister@minorsandbrady.co.uk](mailto:caister@minorsandbrady.co.uk)

 01493 806188

 48 High Street, Caister-on-Sea, Great Yarmouth, NR30 5EH

CAISTER-ON-SEA | DEREHAM | DISS | NORWICH | OULTON BROAD | WROXHAM



## How can we support

- ✓ Residential Mortgages
- ✓ Protection & Insurance
- ✓ Buy-to-let (personal and limited company)



**Matt Waters**  
Senior Mortgage  
and Protection Advisor



**Victoria Payne**  
Mortgage and  
Protection Advisor

Scan to book your  
appointment today



T: 01692 531372

E: [enquiries@norfolk-mortgages.co.uk](mailto:enquiries@norfolk-mortgages.co.uk)