



RESIDE
BOLTON

Cynefin Danner Lane
Horwich, Bolton, BL6 5YF

Price **£399,000**



Cynefin Danner Lane

Horwich, Bolton, BL6 5YF

NOW OFFERED WITH A 5% DEPOSIT CONTRIBUTION!

Spanning an impressive 1,354 square feet, this exquisite four-bedroom home offers a perfect blend of space, style, and sophistication.

The ground floor unfolds into a beautifully open-plan living space, where the sleek kitchen and dining area flow effortlessly into a spacious living room, creating an ideal setting for both everyday living and entertaining. A thoughtfully designed 'lootility' combining a WC and utility room, adds a touch of smart practicality without compromising on elegance.

Upstairs, the home features four beautifully proportioned bedrooms, including two doubles and two singles. The luxurious main bedroom is a true retreat, complete with a walk-in dressing room and a stylish en-suite shower room. Completing the experience, the home also benefits from three on-site parking spaces, offering both convenience and peace of mind.

Please note: Images shown are of a show home and are for illustrative purposes only.

Cynefin, Horwich

Situated in the heart of Horwich, Cynefin offers an exceptional collection of new build homes surrounded by the stunning scenery of the West Pennine Moors. Combining the charm of countryside living with the convenience of nearby towns and cities, Cynefin is perfectly placed for those seeking a balanced lifestyle.

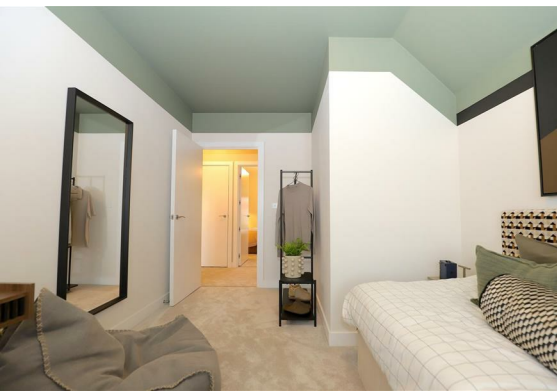
Each of our thoughtfully designed homes features flexible living spaces and generous





gardens, ideal for modern family life, entertaining, or simply unwinding. Discover the perfect blend of comfort, style, and location at Cynefin – a place you'll be proud to call home.

- NEW HOME
- Four Generous Bedrooms
- Triple Glazing
- High Spec kitchen
- Complete in 30 Days
- EPC Rating A
- Three Parking Spaces
- Move In Ready



Floor Plan



Viewing

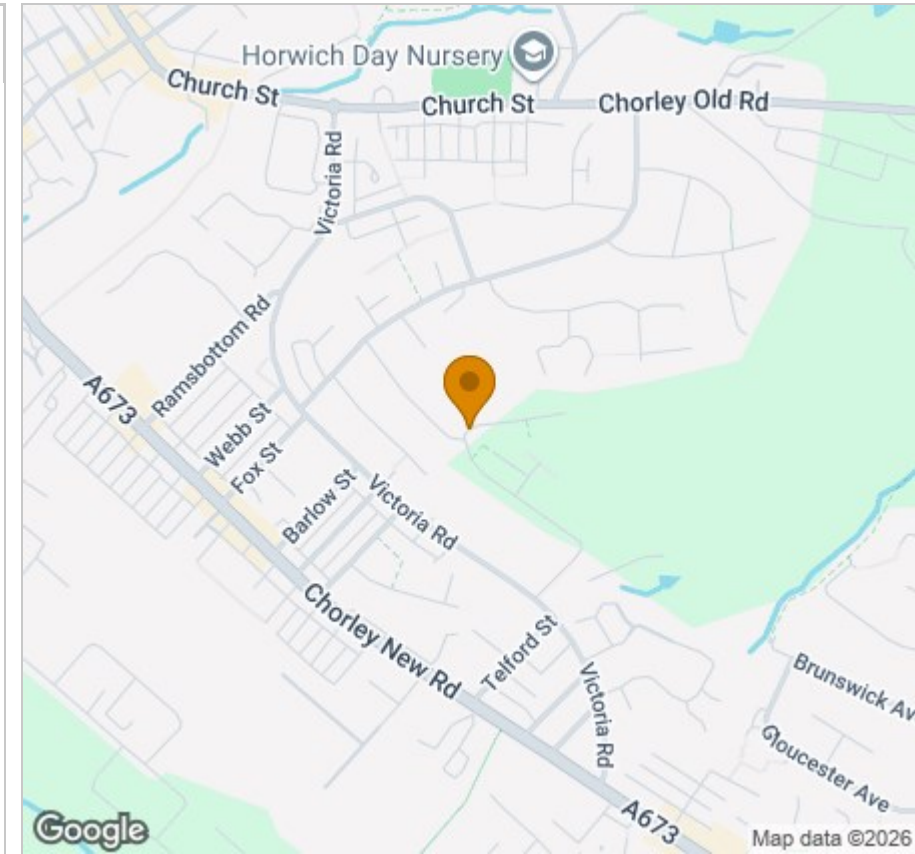
Please contact our Reside Bolton Office on 01204 914 808 if you wish to arrange a viewing appointment for this property or require further information.

These particulars, whilst believed to be accurate are set out as a general outline only for guidance and do not constitute any part of an offer or contract. Intending purchasers should not rely on them as statements of representation of fact, but must satisfy themselves by inspection or otherwise as to their accuracy. No person in this firm's employment has the authority to make or give any representation or warranty in respect of the property.

Le Mans Place Barn Street, Bolton, BL1 1DJ

Tel: 01204 914 808 Email: hello@residebolton.com www.residebolton.com

Area Map



Energy Efficiency Graph

