



Goldhurst Terrace, NW6

£3,250 Per calendar month

A spacious two bedroom, two bathroom garden flat. The property has a large living room, separate kitchen, bright reception and modern bathroom.

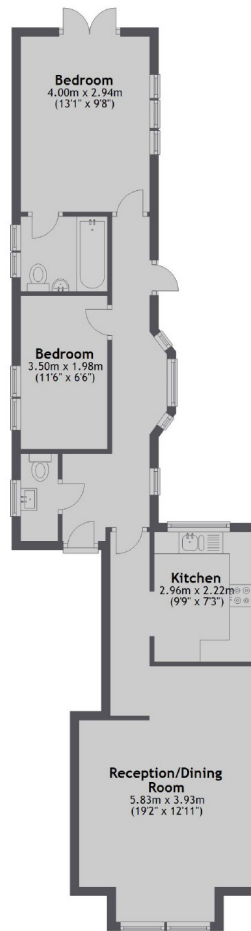
The apartment is located under quarter of a mile from Waitrose ideal for your weekly grocery shop, the O2 centre is great for grabbing dinner and watching the latest film at the cinema.

Features

- Two Double Bedrooms
- Large Living Room
- Two Patios
- Wood Floors Throughout
- Private Garden
- EPC Rating C

Goldhurst Terrace, London, NW6

Ground Floor



Total area: approx. 65.4 sq. metres (703.8 sq. feet)