



# BURNHAM'S ROAD

Little Bookham, Leatherhead, Surrey, KT23



# LOCATED IN THE EVER POPULAR AND PRIVATE BURNHAMS ROAD

Bramblewood, a superb family house situated  
on a beautiful south-westerly facing plot of 0.34 acre.



Local Authority: Mole Valley District Council

Council Tax band: H

Tenure: Freehold



## DESCRIPTION

This impressive double-fronted house was built by the owners in 2010 to a high specification, featuring underfloor heating throughout and solar panels to enhance its energy efficiency.

Set back from the road with a large driveway, EV charger and detached double garage, this beautifully presented family home immediately showcases the time, thought, and investment poured into its design the moment you step inside.

The spacious and welcoming entrance hall leads through to a large kitchen/breakfast room which receives an abundance of light from its south-westerly facing aspect. The kitchen features an island, stone worktops and attractive bespoke cabinetry. There is comfortably space for a dining table, plus a relaxing lounge area to the rear which includes French doors that open onto the garden. A fully-fitted utility room with convenient side access completes the space.











## DESCRIPTION

To the left of the kitchen, a large drawing room features a wood-burning stove and bi-folding doors that open onto the garden patio. At the front of the house, the versatile family room boasts an en-suite shower room, offering flexibility as a guest bedroom. On the right, a lateral dining room provides additional living space and could easily serve as a study. The entrance hall also benefits from generous storage and a guest cloakroom.

On the first floor there are four double bedrooms and a study. The principal bedroom to the rear has built in wardrobes and a luxury en-suite shower room. The bedroom to the front also has an en-suite shower room, whilst the other two double bedrooms and study share a luxury bathroom.

On the top floor there are two further bedrooms, one has an en-suite shower room and the other offers extensive storage, it could also be used as an additional study/playroom.

The mature and colourful rear garden has a large and lateral patio which is perfect for alfresco dining and entertaining. The lawned area is sizable and perfect for children to play and there is the additional bonus of a well-appointed summer house which could be used as a gym, office or teenage den. The garden is bordered by mature hedging and trees to ensure privacy.







## LOCATION DESCRIPTION

Nestled in the heart of Little Bookham, moments from Bookham Common, Burnhams Road offers a tranquil village setting with excellent connectivity and a wealth of local amenities.

The area is well served by transport links, with Bookham Station is 0.6 miles away providing direct trains to London Waterloo and Guildford, while Leatherhead station, 4 miles from the property, offers additional services to London Victoria. The area also benefits from easy access to the A3 and M25, making journeys to Central London, Gatwick and Heathrow Airports fast and convenient.

The selection of the schools in the area is strong, with a good mix of state and independent schools catering to all age groups. Notable schools include Howard of Effingham in the state sector, along with well-regarded independent schools such as Manor House, St Teresa's and Cranmore.





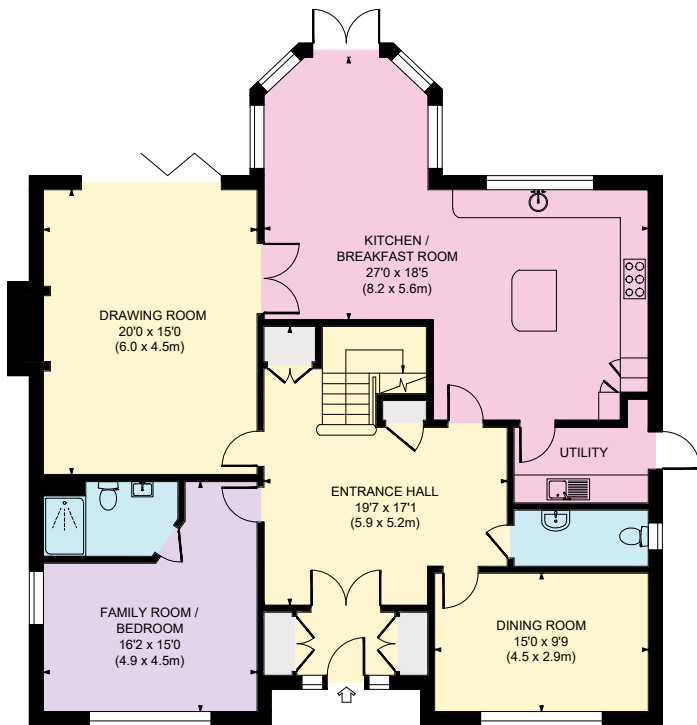
**Approximate Gross Internal Area**

Main House = 3,795 sq. ft / 352.58 sq. m

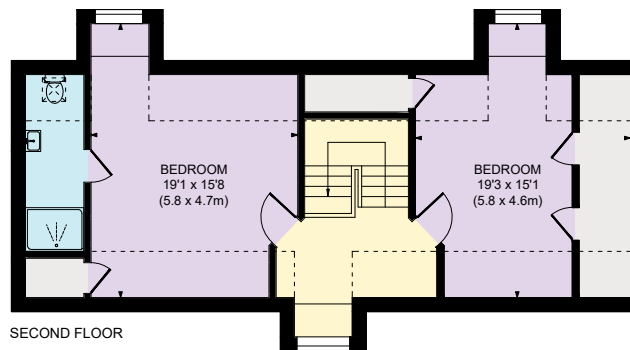
Garage = 395 sq. ft / 36.72 sq. m

Outbuilding = 164 sq. ft / 15.32 sq. m

Total = 4354 sq. ft / 404.62 sq. m



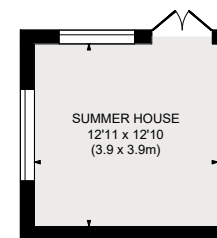
GROUND FLOOR



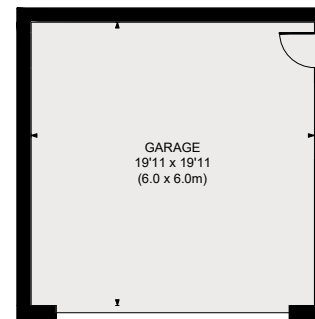
SECOND FLOOR



FIRST FLOOR



OUTBUILDING



GARAGE

This plan is for layout guidance only. Not drawn to scale unless stated. Whilst every care is taken in the preparation of this plan, please check all dimensions, shapes and compass bearings before making decisions reliant upon them.

Approximate Gross Internal Area = 404.62 sq m / 4354 sq ft

This plan is for layout guidance only. Not drawn to scale unless stated. Windows and door openings are approximate. Whilst every care is taken in the preparation of this plan, please check all dimensions, shapes and compass bearings before making any decisions reliant upon them. (ID767266)

**Dan Miller**

01932 591616

dan.miller@knightfrank.com

**Knight Frank Cobham**

50 High Street

Cobham KT11 3EF

**knightfrank.co.uk**

Your partners in property

---

1. Particulars: These particulars are not an offer or contract, nor part of one. You should not rely on statements given by Knight Frank in the particulars, by word of mouth or in writing ("information") as being factually accurate about the property, its condition or its value. Neither Knight Frank nor any joint agent has any authority to make any representations about the property, and accordingly any information given is entirely without responsibility on the part of Knight Frank. 2. Material Information: Please note that the material information is provided to Knight Frank by third parties and is provided here as a guide only. While Knight Frank has taken steps to verify this information, we advise you to confirm the details of any such material information prior to any offer being submitted. If we are informed of changes to this information by the seller or another third party, we will use reasonable endeavours to update this as soon as practical. 3. Photos, Videos etc: The photographs, property videos and virtual viewings etc. show only certain parts of the property as they appeared at the time they were taken. Areas, measurements and distances given are approximate only. 4. Regulations etc: Any reference to alterations to, or use of, any part of the property does not mean that any necessary planning, building regulations or other consent has been obtained. A buyer must find out by inspection or in other ways that these matters have been properly dealt with and that all information is correct. 5. Fixtures and fittings: A list of the fitted carpets, curtains, light fittings and other items fixed to the property which are included in the sale (or may be available by separate negotiation) will be provided by the Seller's Solicitors. 6. VAT: The VAT position relating to the property may change without notice. 7. To find out how we process Personal Data, please refer to our Group Privacy Statement and other notices at <https://www.knightfrank.com/legals/privacy-statement>.

Particulars dated March 2026. Photographs and videos dated April 2025 and March 2026. All information is correct at the time of going to print. Knight Frank is the trading name of Knight Frank LLP. Knight Frank LLP is a limited liability partnership registered in England and Wales with registered number OC305934. Our registered office is at 55 Baker Street, London W1U 8AN. We use the term 'partner' to refer to a member of Knight Frank LLP, or an employee or consultant. A list of members names of Knight Frank LLP may be inspected at our registered office. If you do not want us to contact you further about our services then please contact us by either calling 020 3544 0692, email to [marketing.help@knightfrank.com](mailto:marketing.help@knightfrank.com) or post to our UK Residential Marketing Manager at our registered office (above) providing your name and address.

