



27, Greenfields Gardens, Greenfields, Shrewsbury, SY1 2RN
£800 Per Month



27, Greenfields Gardens, Greenfields, Shrewsbury, SY1 2RN

£800 Per Month

VIRTUAL TOUR AVAILABLE - Modern two bedroom ground floor apartment in this purpose built development a short walk from Shrewsbury town centre and railway station. Includes allocated parking space.

Available: 05/06/26

Description

Comprising: Communal Entrance, hall, living room, kitchen incl White Goods, master bedroom, en-suite, further double bedroom, bathroom, storage cupboard. Allocated parking space. EPC C



Unfurnished

Council Tax Band: B

Available: 5th June 2026

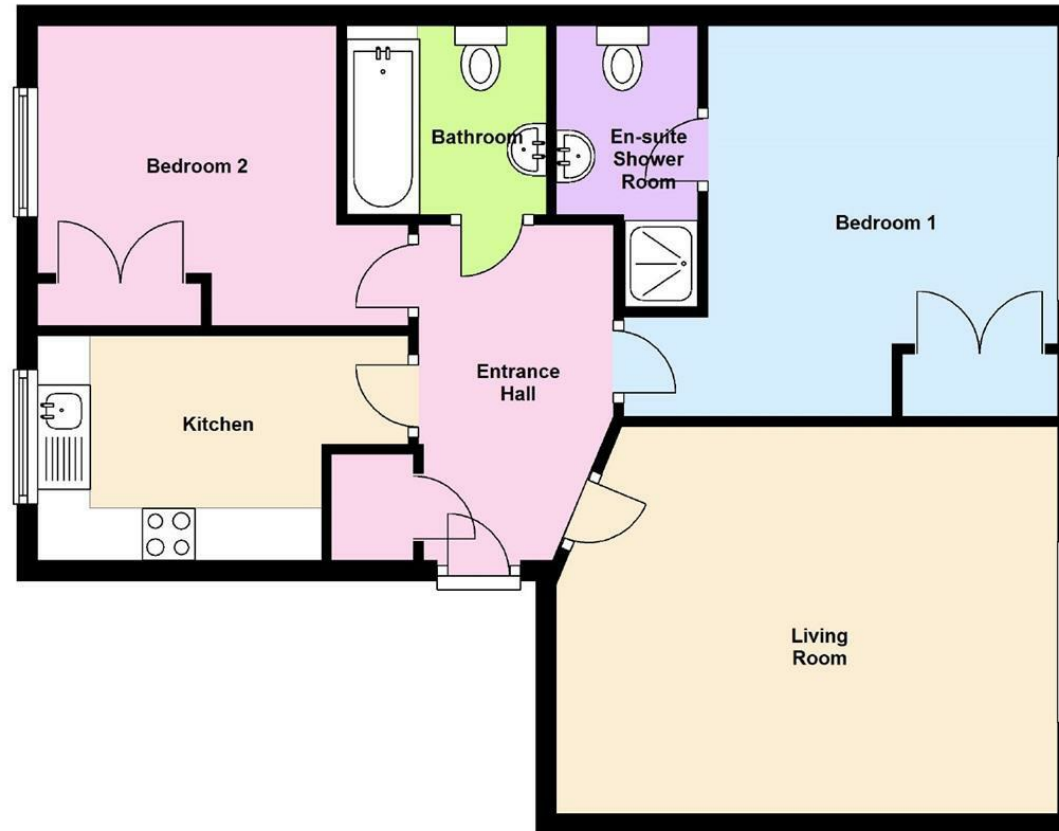
EPC: C



Floor Plans

Ground Floor

Approx. 61.8 sq. metres (664.8 sq. feet)



Total area: approx. 61.8 sq. metres (664.8 sq. feet)

We accept no responsibility for any mistake or inaccuracy contained within the floorplan. The floorplan is provided as a guide only and should be taken as an illustration only. The measurements, contents and positioning are approximations only and provided as a guidance tool and not an exact replication of the property.

Plan produced using PlanUp.

These particulars, whilst believed to be accurate are set out as a general outline only for guidance and do not constitute any part of an offer or contract. Intending purchasers should not rely on them as statements of representation of fact, but must satisfy themselves by inspection or otherwise as to their accuracy. No person in this firm's employment has the authority to make or give any representation or warranty in respect of the property.