



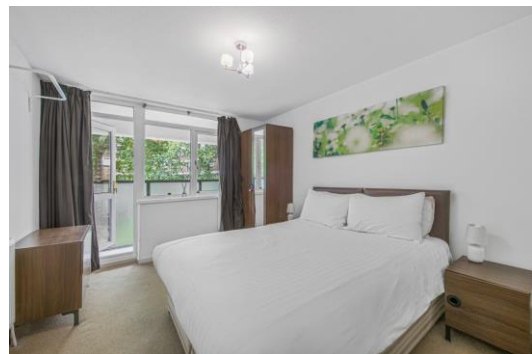
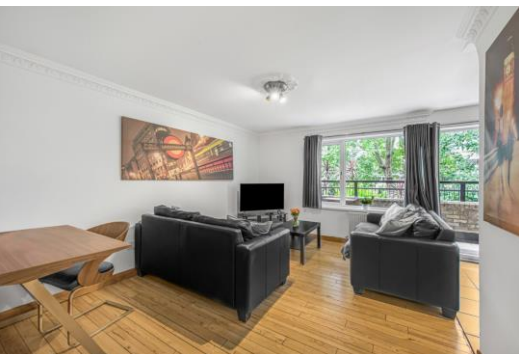
Dudley Court

36 Endell Street, WC2H

Asking Price £1,150,000

Forming part of a well maintained purpose built block, this 3 bedrooms 3 bathrooms residence offers comfortable accommodation featuring balconies with views over landscaped communal gardens.

CHESTERTONS



Dudley Court

36 Endell Street, WC2H



Forming part of a well maintained purpose built block, this 3 bedrooms 3 bathrooms residence offers comfortable accommodation set over two floors. The reception room opens onto a private balcony overlooking the communal gardens below. Accommodation includes 3 large double bedrooms (all en-suite). Located in sought-after Covent Garden, straddling both the West End and The City, this location offers excellent access to the Piazza, Seven Dials Market, Theatreland, and first class education establishments such as LSE and King's Universities.

Tenure: Leasehold 102 years 1 months

Service Charge: £3960.59

Ground Rent: £0

Local Authority: Camden

Council Tax Band: E

Score	Energy rating	Current	Potential
92+	A		
81-91	B		
69-80	C	70 C	72 C
55-68	D		
39-54	E		
21-38	F		
1-20	G		

Chestertons Covent Garden Sales

196 Shaftesbury Avenue

London

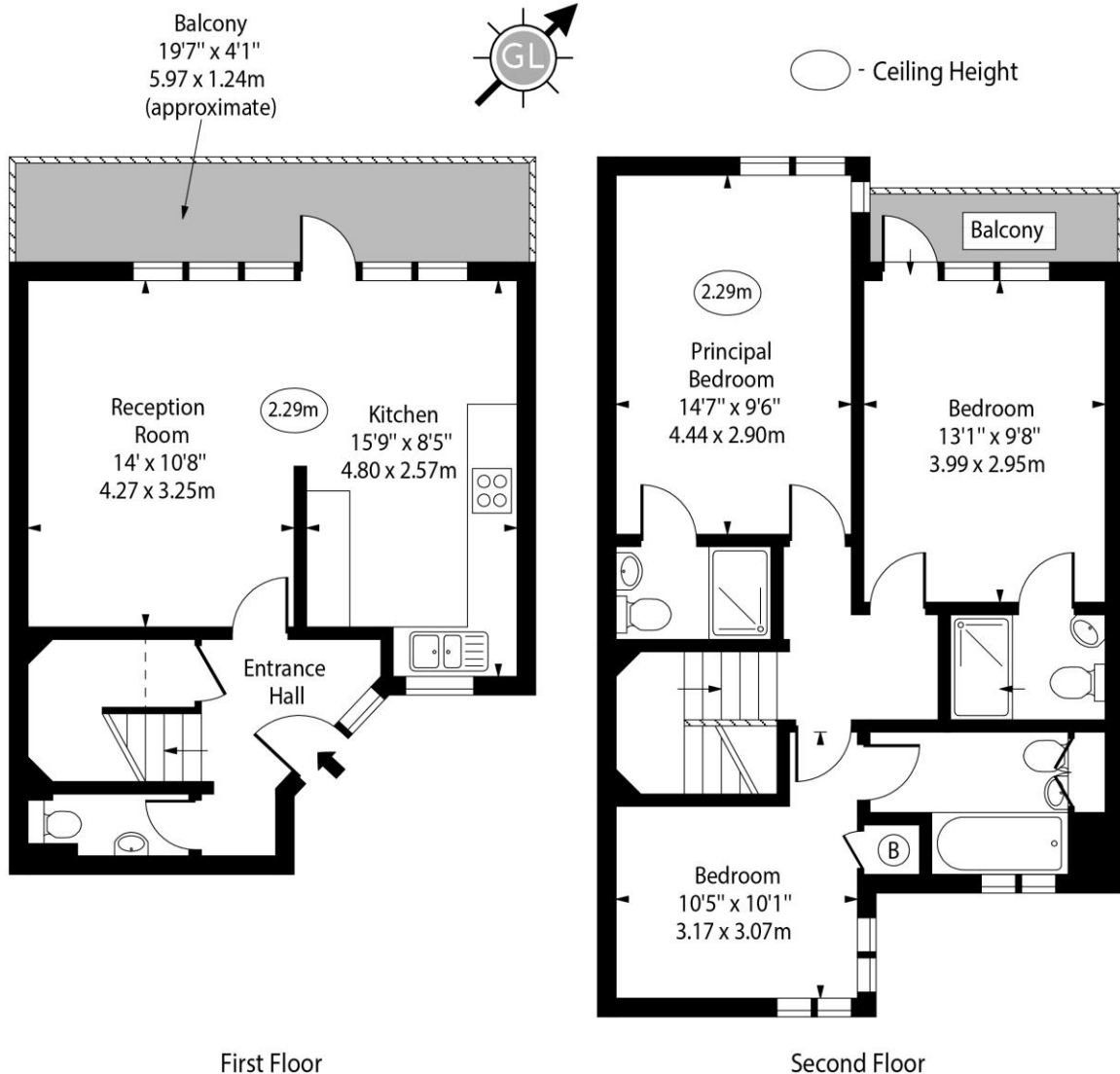
WC2H 8JF

coventgarden@chestertons.co.uk

020 3040 8300

chestertons.co.uk

Dudley Court, Endell Street



Approx Gross Internal Area 968 Sq Ft - 89.93 Sq M

Every attempt has been made to ensure the accuracy of the floor plan shown.
However, all measurements, fixtures, fittings, and data shown are approximate interpretations and
for illustrative purposes only.

Measured according to the RICS IPMS 2. Not To Scale.

www.goldlens.co.uk

Ref. No. 028493E