



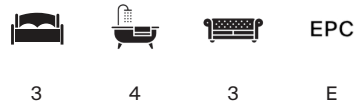
KENSINGTON MANSIONS

Earls Court SW5



TRIPLE ASPECT LATERAL PENTHOUSE WITH LIFT

An exceptional lateral penthouse apartment, occupying the full width of a handsome red-brick mansion block, offering spectacular garden and city views with a caretaker.



Local Authority: Royal Borough of Kensington and Chelsea

Council Tax band: G

Tenure: Share of Freehold, approximately 974 years remaining

We have been unable to confirm the service charge and ground rent. Please make your own enquiries.

Guide Price: £3,200,000



Located within the highly sought-after Kensington Mansions, this exceptional lateral apartment extends to approximately 2,566 sq ft. It spans the width of two buildings, providing beautifully proportioned entertaining space alongside well-positioned bedroom accommodation, ensuring excellent separation.

The impressive entertaining space stretches across the full width of the building, featuring four floor-to-ceiling French doors opening onto a balcony with attractive west-facing views, allowing for exceptional natural light throughout the day. The double reception room flows seamlessly into an elegant dining room, which in turn leads to a well-appointed home office.







There is also a separate, well-equipped kitchen. The apartment has been thoughtfully designed, showcasing exquisite finishes throughout, including hand-painted wood-effect cabinetry and striking antiqued mirrors, creating a refined yet inviting interior.

There are three good-sized bedrooms, two of which have en-suite bathrooms. There are also two shower rooms and a utility space. This elegant home seamlessly pairs classic design with modern day living, offering a wider-than-usual family home or pied-à-terre.



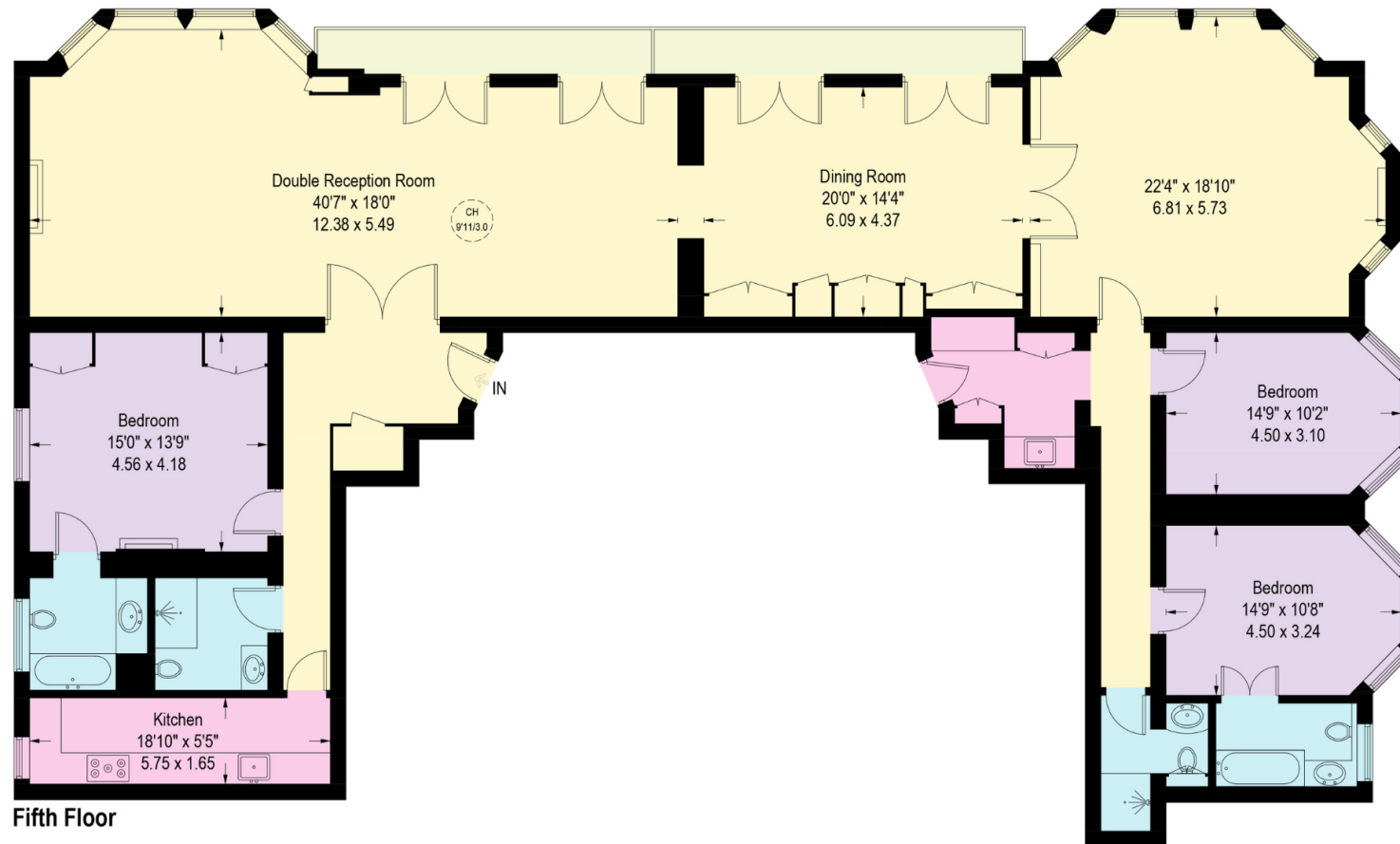
Kensington Mansions is discreetly positioned on Trebovir Road within the Royal Borough of Kensington and Chelsea, one of London's most prestigious and well-connected areas, moments from the excellent amenities of Earl's Court and Kensington.

Please note, we have not yet received confirmation from the client regarding certain information for this property. You should ensure you make your own enquiries regarding material information about this property.









Fifth Floor

Approximate Gross Internal Area = 238.4 sq m / 2566 sq ft

This plan is for layout guidance only. Not drawn to scale unless stated. Windows and door openings are approximate. Whilst every care is taken in the preparation of this plan, please check all dimensions, shapes and compass bearings before making any decisions reliant upon them. (ID767266)

We would be delighted
to tell you more.

Claire Mengham
020 3978 2462
claire.mengham@knightfrank.com

Knight Frank Chelsea and South Kensington
352A King's Road
SW3 5UU

Emmie-Lou Barclay
020 7349 4309
emmie-lou.barclay@knightfrank.com

[knightfrank.co.uk](https://www.knightfrank.co.uk)

Your partners in property

1. Particulars: These particulars are not an offer or contract, nor part of one. You should not rely on statements given by Knight Frank in the particulars, by word of mouth or in writing ("information") as being factually accurate about the property, its condition or its value. Neither Knight Frank nor any joint agent has any authority to make any representations about the property, and accordingly any information given is entirely without responsibility on the part of Knight Frank. 2. Material Information: Please note that the material information is provided to Knight Frank by third parties and is provided here as a guide only. While Knight Frank has taken steps to verify this information, we advise you to confirm the details of any such material information prior to any offer being submitted. If we are informed of changes to this information by the seller or another third party, we will use reasonable endeavours to update this as soon as practical. 3. Photos, Videos etc: The photographs, property videos and virtual viewings etc. show only certain parts of the property as they appeared at the time they were taken. Areas, measurements and distances given are approximate only. 4. Regulations etc: Any reference to alterations to, or use of, any part of the property does not mean that any necessary planning, building regulations or other consent has been obtained. A buyer must find out by inspection or in other ways that these matters have been properly dealt with and that all information is correct. 5. Fixtures and fittings: A list of the fitted carpets, curtains, light fittings and other items fixed to the property which are included in the sale (or may be available by separate negotiation) will be provided by the Seller's Solicitors. 6. VAT: The VAT position relating to the property may change without notice. 7. To find out how we process Personal Data, please refer to our Group Privacy Statement and other notices at <https://www.knightfrank.com/legals/privacy-statement>.

Particulars dated May 2026. Photographs and videos dated May 2026. All information is correct at the time of going to print. Knight Frank is the trading name of Knight Frank LLP. Knight Frank LLP is a limited liability partnership registered in England and Wales with registered number OC305934. Our registered office is at 55 Baker Street, London W1U 8AN. We use the term 'partner' to refer to a member of Knight Frank LLP, or an employee or consultant. A list of members names of Knight Frank LLP may be inspected at our registered office. If you do not want us to contact you further about our services then please contact us by either calling 020 3544 0692, email to marketing.help@knightfrank.com or post to our UK Residential Marketing Manager at our registered office (above) providing your name and address.