

**LONDON
VICTORIA
GROUPS** 

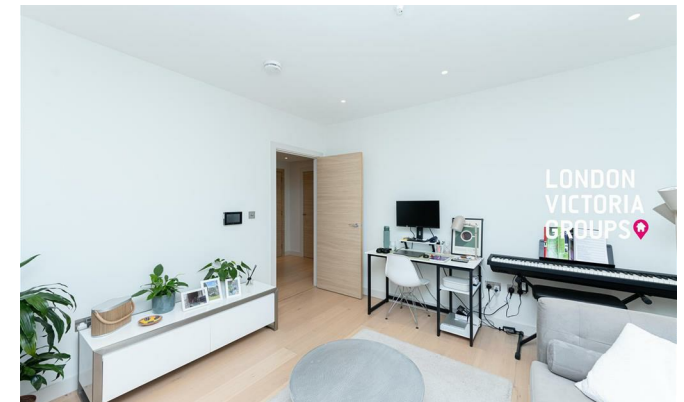


Ebury Apartments, 1B Sutherland Street

, London SW1V 4BF

- One-bedroom apartment
- Modern fully fitted kitchen
- Concierge
- EPC-B
- Bright open-plan living and dining area
- Moments from Victoria Station
- Lift
- CTB-F

£2,800 Per Month

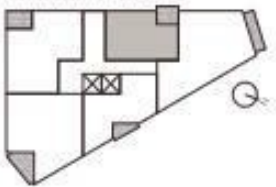


Local Authority **Westminster**
Council Tax Band **F**
EPC Rating **B**

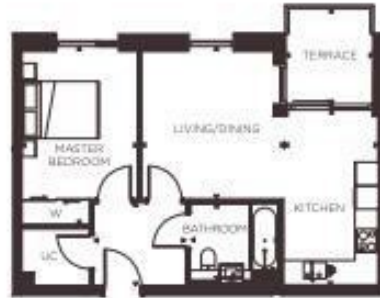
1 BEDROOM TOTAL INTERNAL AREA: 50.14 M²/539.70 FT²

LIVING ROOM	5.98 m x 6.52 m	19'8" x 21'4"
KITCHEN	4.47 m x 2.41 m	14'8" x 7'8"
MASTER BEDROOM	4.62 m x 2.97 m	15'2" x 9'9"
BATHROOM	2.26 m x 2.10 m	7'5" x 6'11"
TERRACE	2.59 m x 2.13 m	8'6" x 6'12"
TOTAL EXTERNAL AREA	4.84 m ² /52.01 ft ²	

APARTMENT LOCATOR



FLOOR 10
FLOOR 9
FLOOR 8
FLOOR 7
FLOOR 6
FLOOR 5
FLOOR 4
FLOOR 3
FLOOR 2
FLOOR 1



London Office Office

Spaces Victoria, 25 Wilton Road, Pimlico,
London, SW1V 1LW

Contact

020 3084 3094
XL@londonvictoriagroups.co.uk
www.londonvictoriagroups.co.uk

Agents Note: Whilst every care has been taken to prepare these particulars, they are for guidance purposes only. All measurements are approximate and for general guidance purposes only and whilst every care has been taken to ensure accuracy, they should not be relied upon and potential buyers/tenants are advised to recheck the measurements.