



Connells

Marshfield Road
Chippenham



Property Description

The Pines Hotel – Chippenham

A Rare Opportunity – No Chain

Welcome to The Pines Hotel, a substantial and characterful property offering endless potential in the heart of Chippenham. This former hotel presents an exciting chance for investors, developers, or those seeking a unique project.

Key Features:

26 Bedrooms – Generous accommodation across multiple floors

13 Bathrooms – Ample facilities for guests or conversion.

Professional Kitchen – Fully equipped for large-scale catering.

Bar Area – Perfect for entertaining or hospitality use.

Garages & Parking – Extensive space for vehicles.

No Chain – Ready for immediate purchase

The Opportunity -

The property is in need of some updating, making it ideal for those looking to add value and create something truly special. Whether you envision a boutique hotel, luxury apartments, or a grand private residence, The Pines Hotel offers a flexible layout and impressive footprint.

Location

Situated in the desirable market town of Chippenham, with excellent transport links to Bath, Bristol, and London, this property combines convenience with potential.

Accommodation

This property is currently arranged over four floors as follows:

Lower Ground Floor:

Currently comprising Three Bedrooms, a Kitchen and Lounge. A staff room, commercial kitchen and food preparation room and large storage area.

Ground Floor Accommodation:

Comprising Entrance Hall, Lounge, Second Reception, Dining Room, a Kitchen, Bathroom, Eight Bedrooms and Two Cloakrooms.

First Floor Accommodation:

Eight Bedrooms, six Ensuites and two additional bathrooms.

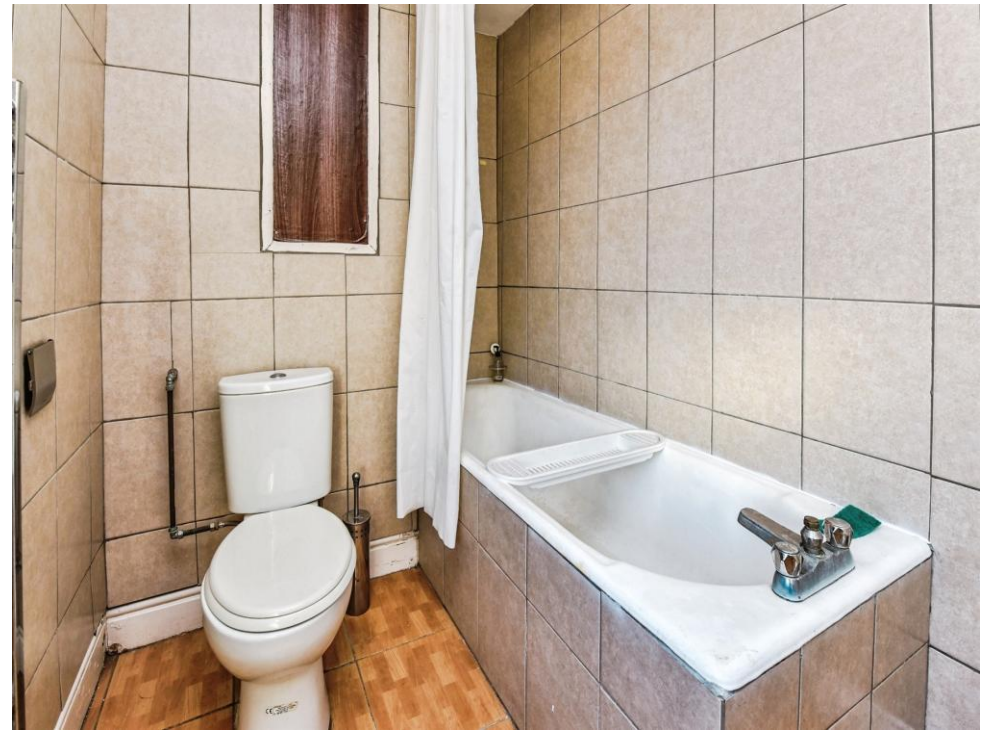
Second Floor Accommodation:

Six Bedrooms, four with Ensuites and a further Bathroom and Cloakroom.

Agents Note:

As this property is currently a hotel, there is no council tax paid.









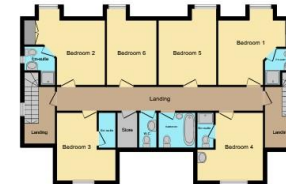
Lower Ground Floor



Ground Floor



First Floor



Second Floor

This floor plan is for illustrative purposes only. It is not drawn to scale. Any measurements, floor areas (including any total floor area), openings and orientation are approximate. No details are guaranteed, they cannot be relied upon for any purpose and they do not form part of any agreement. No liability is taken for any error, omission or misstatement. A party must rely upon its own inspection(s). Powered by www.propertybox.io



To view this property please contact Connells on

T 01249 652 476
E chippenham@connells.co.uk

59 Market Place
CHIPPENHAM SN15 3HL

EPC Rating: C Council Tax Band: Deleted

Tenure: Freehold

view this property online connells.co.uk/Property/CHM306405



1. MONEY LAUNDERING REGULATIONS Intending purchasers will be asked to produce identification documentation at a later stage and we would ask for your co-operation in order that there will be no delay in agreeing the sale. 2. These particulars do not constitute part or all of an offer or contract. 3. The measurements indicated are supplied for guidance only and as such must be considered incorrect. Potential buyers are advised to recheck measurements before committing to any expense. 4. We have not tested any apparatus, equipment, fixtures, fittings or services and it is in the buyers interest to check the working condition of any appliances.

Connells Residential is registered in England and Wales under company number 1489613, Registered Office is Cumbria House, 16-20 Hockliffe Street, Leighton Buzzard, Bedfordshire, LU7 1GN. VAT Registration Number is 500 2481 05.

See all our properties at www.connells.co.uk | www.rightmove.co.uk | www.zoopla.co.uk

Property Ref: CHM306405 - 0008