



# Inglebys

Estate Agents



## 25 Coast Road

Redcar, TS10 3NL

**£399,995**

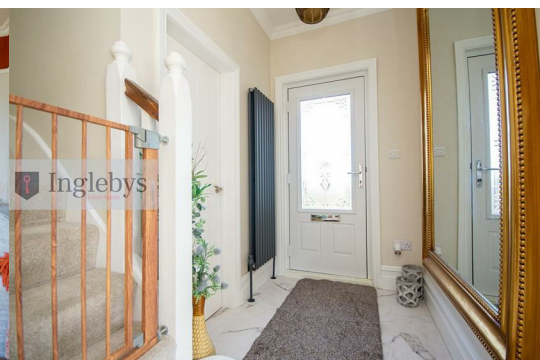


Located on the picturesque Coast Road in Redcar, this spectacular house is presented to a very high standard throughout.

Inside, you will find two spacious reception rooms that provide ample space for relaxation and entertaining. The house boasts three spacious bedrooms, including a master suite that features an en suite bathroom and a Juliet balcony, allowing you to enjoy the fresh sea air and breathtaking coastal views.

The Kitchen and Bathroom suites are thoughtfully designed with high-quality fixtures and fittings, ensuring a touch of luxury in your daily routine.

With off street parking for two vehicles, an open plan family room to the kitchen, front and rear gardens ,all within a short walking distance to the beach.



Tenure: Freehold.

Council Tax Band: D

EPC Rating: D

**Entrance Hallway 4'7" x 5'8" (1.4 x 1.73)**

Partially glazed, composite entrance door.  
Marble effect LVT flooring.

Door to the Ground Floor WC and open plan to the Kitchen/Family Room.

**Ground Floor WC 3'6" x 5'2" (1.09 x 1.60)**

Double glazed, frosted window to the front aspect.  
Low level WC.

Hand basin incorporated into a vanity unit.  
Tiled splashbacks.  
Marble effect LVT flooring.  
Column radiator.

**Living Room 14'2" x 13'5" (4.34 x 4.11)**

Double glazed bay window to the front aspect.  
Open fireplace with an electric stove.

**Open Plan Family Room 21'5" x 15'8" (6.55 x 4.78)**

A bay window with double glazed French doors, opening to the rear garden.  
Marble effect LVT flooring.  
Breakfast bar, matching the kitchen units.

**Kitchen 8'7" x 18'4" (2.64 x 5.59)**

Double glazed window to the rear aspect and a skylight.  
A range of fitted wall and base units, styled with wood and gold accents, with matching roll top work surfaces.  
Black composite sink and mixer tap.  
Integrated appliances including an electric cooker, induction hob, combination oven and microwave, a warming drawer and a fridge/freezer.  
Marble effect LVT flooring.  
Door to the Utility Room.

**Utility Room 5'4" x 9'3" (1.65 x 2.82)**

Double glazed window to the rear aspect.  
Wall and base units, matching the kitchen units.  
Wall mounted combination boiler (fitted 2026)  
uPVC door, opening to the rear external

**First Floor Landing**

Loft access hatch with a pull down ladder.

**Master Bedroom 21'7" x 13'1" (6.60 x 4.0)**

Double glazed, bay window to the front aspect with sweeping views of the coast and sea.  
Built in wardrobes.  
Dressing area/office space with Juliet balcony.  
Door to the en suite.

**En Suite 7'8" x 2'5" (2.36 x 0.76)**

A modern suite comprising of a low level WC, pedestal wash hand basin and a glass shower enclosure.  
Built in storage cupboard.  
Ceramic tiled flooring.

**Bedroom Two 12'2" x 12'2" (3.71 x 3.71)**

Double glazed bay window to the rear aspect.

**Bedroom Three 9'3" x 8'3" (2.82 x 2.54)**

Double glazed window to the rear aspect.

**Front External**

The well maintained, gated front garden is mainly laid to lawn with a path leading to the front entrance.

**Rear External**

The spacious rear garden is a perfect sun-trap with a well maintained lawn, decked patio and pergola, a paved patio and a bar area.  
Through the rear gate is a driveway, providing off street parking for two vehicles.

**Garage**

A brick built double garage to the rear, half of which has been converted into storage but could be reverted back if needed.

**Disclaimer**

Please note that all measurements contained in these particulars are for guidance purposes only and should not be relied upon for ordering carpets, furniture, etc. Anyone requiring more accurate measurements may do so by arrangement with our office.

Our description of any appliances and / or services (including any central heating system, alarm systems, etc.) should not be taken as any guarantee that these are in working order. The buyer is therefore advised to obtain verification from their solicitor, surveyor or other qualified persons to check the appliances / services before entering into any commitment.

The tenure details and information supplied within the marketing descriptions above are supplied to us by the vendors. This information should not be relied upon for legal purposes and should be verified by a competent / qualified person prior to entering into any commitment.

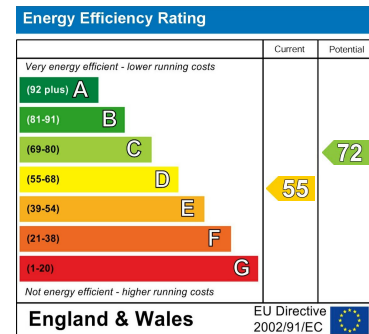
## Area Map



## Floor Plans



## Energy Efficiency Graph



These particulars, whilst believed to be accurate are set out as a general outline only for guidance and do not constitute any part of an offer or contract. Intending purchasers should not rely on them as statements of representation of fact, but must satisfy themselves by inspection or otherwise as to their accuracy. No person in this firm's employment has the authority to make or give any representation or warranty in respect of the property.

Inglebys Estate Agents 4a Station Street, Saltburn by the Sea, North Yorkshire, TS12 1AE  
Tel: 01287 623648 Email: enquiries@inglebysestateagents.com www.inglebysestateagents.com