



## Mead Field Drive, Great Hallingbury, CM22 7FJ

- Guide Price £625,000 - £650,000
  - Brand New Home
    - Detached
  - Five Double Bedrooms
    - Study
    - Utility Room
  - Underfloor heating throughout ground floor (zoned)
    - Driveway

• Under section 21 of the Estate Agents Act 1979 We are required to advise that the owner of this property is connected to or is employed by Noble Residential Limited.

**Guide Price £625,000 - £650,000 - Freehold - Council Tax: New Build TBC**

# Mead Field Drive

Great Hallingbury, CM22 7FJ



## Entrance Hall

14'5 x 9'4 (4.39m x 2.84m)

Entrance door with full height double glazed windows to either side, under floor heating, under stairs cupboard, stairs to first floor.

## Ground Floor WC

Low level WC, wash hand basin, under floor heating.

## Study

11'1 x 7'4 (3.38m x 2.24m)

Double glazed window to front, under floor heating.

## Living Room

24' x 10'11 (7.32m x 3.33m)

Double glazed windows to front and side, double glazed French doors to rear, open plan to kitchen area, under floor heating.

## Kitchen Area

14'5 x 10'6 (4.39m x 3.20m)

Double glazed bi-fold doors to rear, wall and base units, island with sink and breakfast bar area, range of appliances included, under floor heating.

## Dining Area

11' x 7'10 (3.35m x 2.39m)

Double glazed French doors to rear, open plan to kitchen area, under floor heating.

## Utility Room

8'1 x 7'7 (2.46m x 2.31m)

Double glazed door to side, wall and base units, single drainer sink, plumbing for washing machine and space for tumble dryer, hot water system, under floor heating.

## Landing

Loft access, radiator.

## Bedroom One

14'4 x 10'2 (4.37m x 3.10m)

Double glazed French doors opening onto Juliette Balcony, radiator.

## En Suite

Frosted double glazed window to rear, low level

WC, vanity wash hand basin, walk in shower enclosure, part tiled walls, heated towel rail.

## Bedroom Two

12'3 x 10'2 at max (3.73m x 3.10m at max)

Double glazed French doors opening onto Juliette Balcony, radiator.

## En Suite

Frosted double glazed window to rear, low level WC, vanity wash hand basin, walk in shower enclosure, part tiled walls, heated towel rail.

## Bedroom Three

11'5 x 11'1 (3.48m x 3.38m)

Two double glazed windows to front, radiator.

## Bedroom Four

11' x 9'5 (3.35m x 2.87m)

Double glazed window to front, radiator, cupboard.

## Bedroom Five

10'10 x 9'4 (3.30m x 2.84m)

Two double glazed windows to front, radiator.

## Bathroom

Frosted double glazed window to rear, low level WC, wash hand basin, panelled bath with shower over, part tiled walls, heated towel rail.

## Garden

44' x 28' (13.41m x 8.53m)

Side pedestrian access, patio area, lawn, outside tap, power and lighting.

## Driveway

Driveway to front.

## Section 21

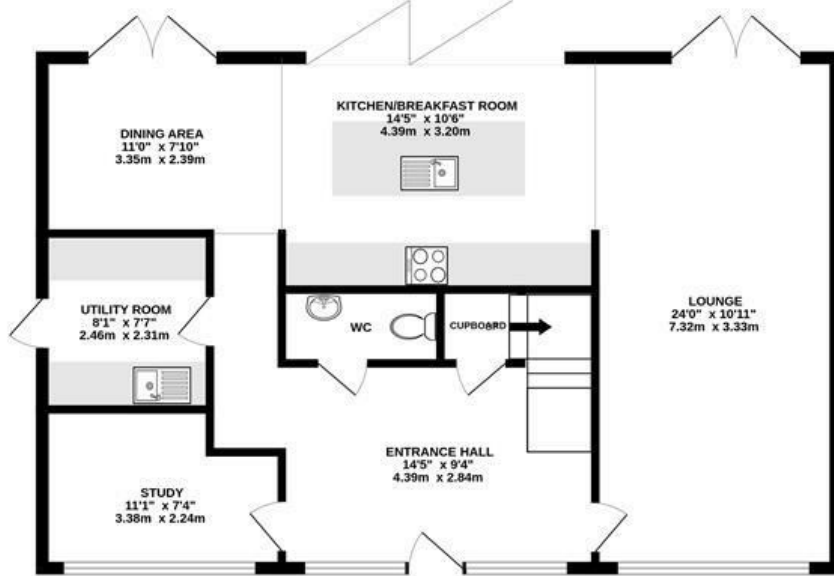
Under section 21 of the Estate Agents Act 1979 We are required to advise that the owner of this property is connected to or is employed by Noble Residential Limited.

## \*Part Exchange

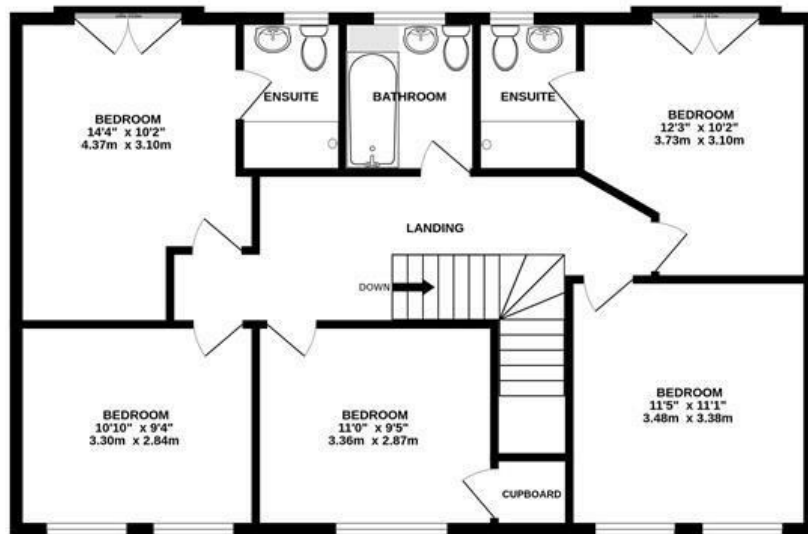
Part exchange will be considered by the builders but will be dependent on the proposed properties value and location, for more information please speak to any of the sales team.



**GROUND FLOOR**  
865 sq.ft. (80.3 sq.m.) approx.



**1ST FLOOR**  
865 sq.ft. (80.3 sq.m.) approx.



**TOTAL FLOOR AREA: 1729 sq.ft. (160.6 sq.m.) approx.**

Whilst every attempt has been made to ensure the accuracy of the floorplan contained here, measurements of doors, windows, rooms and any other items are approximate and no responsibility is taken for any error, omission or mis-statement. This plan is for illustrative purposes only and should be used as such by any prospective purchaser. The services, systems and appliances shown have not been tested and no guarantee as to their operability or efficiency can be given.  
Made with Metropix ©2025

These particulars, whilst believed to be accurate are set out as a general outline only for guidance and do not constitute any part of an offer or contract. Intending purchasers should not rely on them as statements of representation of fact, but must satisfy themselves by inspection or otherwise as to their accuracy. No person in this firm's employment has the authority to make or give any representation or warranty in respect of the property.

Material Information:  
Council Tax Band: New Build  
Tenure: Freehold

