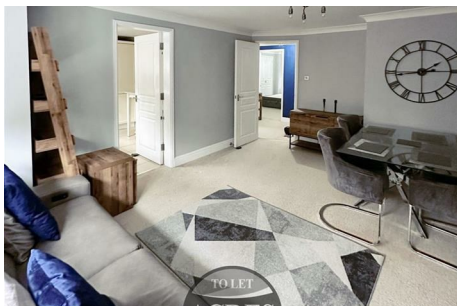


## Horsley Road, , B74 3FE

£1,200 Per Month



- \*\*\* AVAILABLE 16TH AUGUST 2026\*\*\*
- Access To Sutton Coldfield Town Centre
- Well Presented Throughout
- Professionally Managed by ACRES
- Two Bedroom Apartment
- Well Connected Transport Links
- Modern Fixtures & Fittings
- Family Bathroom
- Principle Bedroom With En-Suite
- Council Tax Band D

Contact us for more details:  
Tel: 0121 312 4997 Email: [lettings@acres.co.uk](mailto:lettings@acres.co.uk)

Full listings online at [www.acres.co.uk](http://www.acres.co.uk)