

abbotFox

abbotFox
LET BY
abbotFox



Solario Road, Costessey, Norwich
£950 PCM

“

We are a team of genuine individuals who hold a deep passion for both property and marketing. Collectively, we bring over 70 years of experience in the property market of Norfolk and Suffolk. Our affection for both counties runs deep, and we are enthusiastic about sharing our passion with you.

Colin McKenzie | **Branch Partner**







THE DETAIL _____

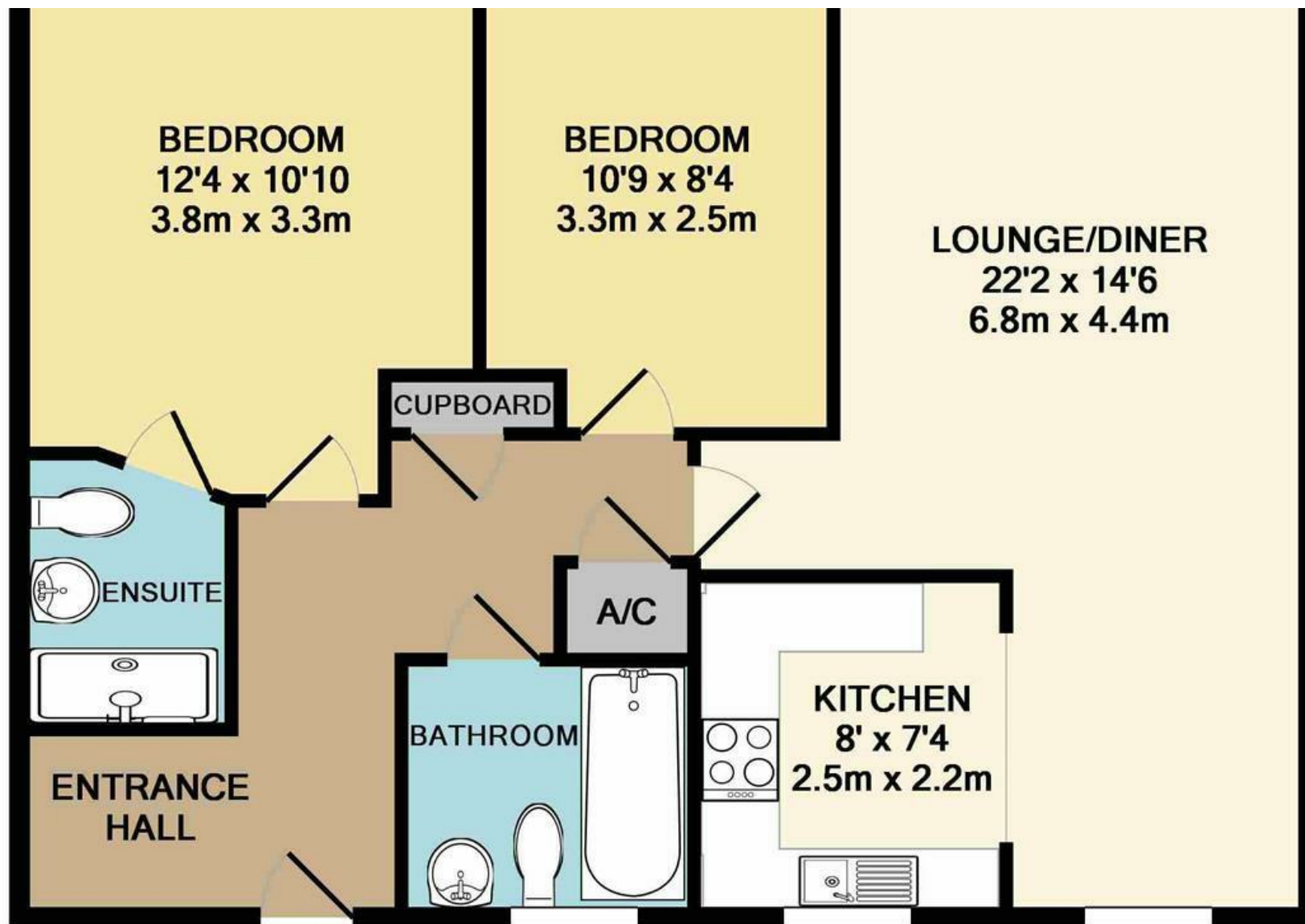
abbotFox presents this immaculately presented two-bedroom first-floor apartment offering bright, contemporary living throughout. The accommodation comprises two generous double bedrooms, including a principal bedroom with en-suite shower room, a spacious open-plan living/kitchen area, and a modern family bathroom. Large windows allow for an abundance of natural light, creating a bright and welcoming atmosphere throughout the home. The property further benefits from allocated off-road parking.

Ideally situated to the west of Norwich, the apartment enjoys excellent access to the A47 and A11, making it perfect for commuters. The popular Longwater Retail Park is just a short distance away, offering a range of shops, supermarkets and amenities. The nearby Norfolk Showground Park & Ride provides regular services into Norwich city centre, while a variety of local green spaces and recreational facilities are also within easy reach.



THE HIGHLIGHTS _____

- Modern Apartment
- Two Double Bedrooms
- Master With En Suite
- Modern Bathroom
- Dual Aspect Lounge
- Modern Fitted Kitchen
- White Goods
- Allocated Parking



Whilst every attempt has been made to ensure the accuracy of the floor plan contained here, measurements of doors, windows, rooms and any other items are approximate and no responsibility is taken for any error.

Let's talk

01603 660000

sales@abbotfox.co.uk

@abbotfox

EPC RATING -

Disclaimer – In accordance with the Property Misdescriptions Act, the company abbotFox gives notice that all descriptions, references to condition, necessary permissions for use and other details are given in good faith and believed to be correct, but any purchaser should not rely on them as statements of fact, and must satisfy themselves by inspection or other means, as to their accuracy.