

17-27 High Street

Hounslow • Greater London • TW3 1TA

PCM: £1,750 PCM



coopers
est 1986



A well-presented and unfurnished two-bedroom flat is conveniently located just minutes from Hounslow High Street and Hounslow East Tube Station. This exceptional property offers two spacious double bedrooms, two modern bathrooms, including one en-suite, a generously sized living room, a fully fitted kitchen, and allocated parking. Additional features include an entry phone system.

The property also benefits from easy access to the town centre, the tube station, and Hounslow Town Primary School, making it an ideal choice for comfortable and convenient living.

Available IMMEDIATELY and offered unfurnished

Local authority: London Borough of Hounslow
Council tax: Band D

Third floor apartment

Two spacious bedroom

Ensuite

Walking distance to Hounslow East Station

Lift access

Stylish kitchen

Resident parking

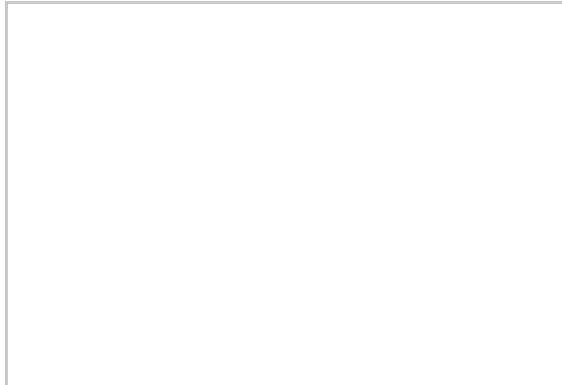
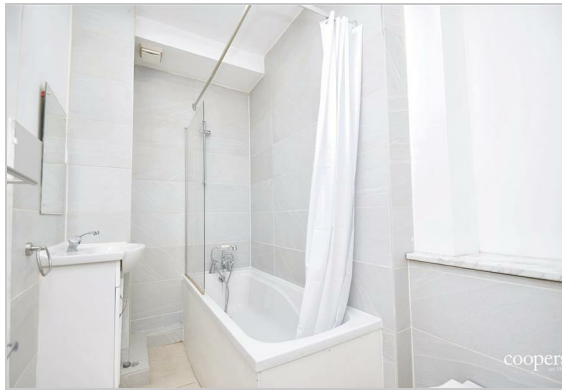
Shops and amenities nearby

Unfurnished

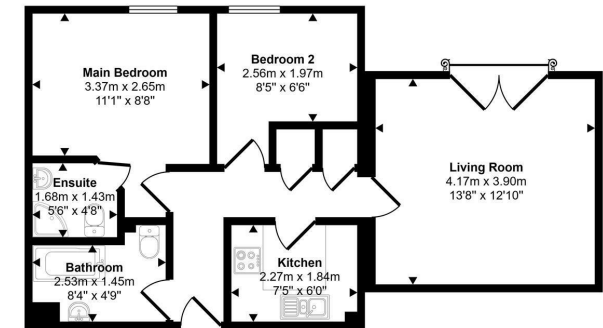
Available Immediately

Available Date

3rd February 2025



Approx Gross Internal Area
53 sq m / 571 sq ft



Floorplan

This floorplan is only for illustrative purposes and is not to scale. Measurements of rooms, doors, windows, and any items are approximate and no responsibility is taken for any error, omission or mis-statement. Icons of items such as bathroom suites are representations only and may not look like the real items. Made with Made Snappy 360.



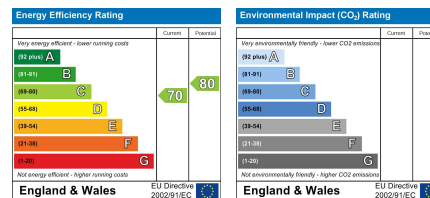
coopers
est 1986

0208 017 6000

18 Bridge Street, Pinner,
Middlesex, HA5 3JF

pinner@coopersresidential.co.uk

CoopersResidential.co.uk



Important Notice: These particulars, whilst believed to be accurate are set out as a general outline only for guidance and do not constitute any part of an offer or contract. Intending purchasers should not rely on them as statements or representation of fact, but must satisfy themselves by inspection or otherwise has the authority to make or give any representation or warranty in respect of the property.