



STEPHENSON BROWNE

## Goss Place, Alsager

ST7 2LR



£500,000

# DESCRIPTION

OVERLOOKING WOODLAND - DOUBLE GARAGE - SUBSTANTIAL FIVE BEDROOM FAMILY HOME - Goss Place is a welcoming, incredibly spacious family home on a popular estate within central Alsager, close to many local amenities the town has to offer, as well as the brilliant, well regarded primary and secondary schools. The property has been well maintained by it's current owners since construction approximately 10 years ago by Miller Homes.

A pleasant hallway giving access to the impressive lounge, enjoying a bay window to the front, a second reception room and downstairs WC. The fully fitted kitchen possesses a range of wall and base units, having a spacious dining/sitting area. To the first floor, you will find the incredible principal bedroom having fitted wardrobe and en-suite shower room, two further double bedrooms and the family bathroom. To the second floor, there are two further double bedrooms, one having fitted wardrobes, and a shower room.

The property hosts an appealing frontage with driveway providing parking for numerous vehicles and a detached double garage. The rear garden is low maintenance being mainly laid to lawn with a paved patio area providing ample space for garden furniture and outside entertaining.

Goss Place will not be around for long, to avoid missing out, call Stephenson Browne today to arrange a viewing!





# ROOM DESCRIPTIONS

## Entrance Hall

Composite entrance door having double glazed frosted insets. Single panel radiator. Stairs to the first floor. Understairs storage cupboard.

## Lounge

14'0" x 10'3"

Two single panel radiators. Double glazed window to the front elevation.

## Snug

11'11" x 9'4"

Single panel radiator. Double glazed window to the front elevation.

## Kitchen Diner/Family Room

27'5" x 12'2"

A range of wall, base and drawer units having work surfaces over incorporating a stainless steel 1.5 bowl sink unit with drainer and mixer tap. Integrated fridge freezer. Integrated oven, electric hob and extractor canopy over. Integrated dishwasher. Two pairs of French doors opening to the rear garden. Single panel radiator.

## Downstairs WC

Two piece suite comprising a low level WC and a pedestal wash hand basin with mixer tap. Single panel radiator. Half tiled walls.

## First Floor Landing

Doors to all rooms. Storage cupboard housing the hot water cylinder.

## Principal Bedroom

15'7" x 10'3"

Fitted wardrobes having hanging rail and shelving. Single panel radiator. Double glazed window to the front elevation. Door into:-

## En-Suite

7'4" x 5'6"

Three piece suite comprising a low level WC with push button flush, pedestal wash hand basin with mixer tap and a shower cubicle with shower over. Single panel radiator. Partly tiled walls. Double glazed frosted window to the rear elevation.

## Bedroom Four

10'9" x 9'4"

Single panel radiator. Double glazed window to the rear elevation.

## Bedroom Five

9'4" x 8'9"

Fitted wardrobes having hanging rail and shelving. Single panel radiator. Double glazed window to the front elevation.



### **Family Bathroom**

10'0" x 5'6"

Four piece suite comprising a low level WC with push button flush, pedestal wash hand basin with mixer tap, a panelled bath with mixer tap and a shower cubicle with shower over. Single panel radiator. Half tiled walls. Double glazed frosted window to the rear elevation.

### **Second Floor Landing**

Skylight. Loft access point. Doors to all rooms.

### **Bedroom Two**

16'11" x 10'3"

Fitted wardrobes having hanging rail and shelving. Single panel radiator. Double glazed window to the front elevation.

### **Bedroom Three**

16'11" x 9'5"

Single panel radiator. Double glazed window to the front elevation.

### **Shower Room**

6'11" x 6'0"

Three piece suite comprising a low level WC with push button flush, pedestal wash hand basin with mixer tap and a shower cubicle with shower over. Single panel radiator. Partly tiled walls. Skylight.

### **Externally**

The property is approached by a tarmac driveway providing ample off road parking leading to a detached double garage and an access gate opening to the rear garden. Lawned front garden with borders housing shrubs and plants. The rear is mainly laid to lawn with a paved patio area providing ample space for garden furniture. Fenced boundaries.

### **Double Garage**

20'1" x 19'9"

Two up and over doors to the front. Courtesy door to the side. Power and lighting.

### **Council Tax Band**

The council tax band for this property is F.

### **NB: Tenure**

We have been advised that the property tenure is FREEHOLD, please note, we have been made aware by the sellers that an estate charge is payable to cover maintenance for the new development. This is normal for properties of this age. We would advise confirming with your conveyancer the charges prior to exchange of contracts.

### **Alsager AML Disclosure**

Agents are required by law to conduct Anti-Money Laundering checks on all those buying a property. Stephenson Browne charge £49.99 plus VAT for an AML check per purchase transaction. This is a non-refundable fee. The charges cover the cost of obtaining relevant data, any manual checks that are required, and ongoing monitoring. This fee is payable in advance prior to the issuing of a memorandum of sale on the property you are seeking to buy.

### **NB: Copyright**

The copyright of all details, photographs and floorplans remain the possession of Stephenson Browne.



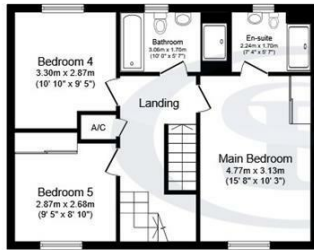
# Floorplans

Goss Place, ST7 2LR



## Ground Floor

Floor area 65.1 sq.m. (701 sq.ft.)



## First Floor

Floor area 54.2 sq.m. (583 sq.ft.)



## Second Floor

Floor area 44.8 sq.m. (482 sq.ft.)



## Garage

Floor area 36.8 sq.m. (396 sq.ft.)

Total floor area: 200.9 sq.m. (2,162 sq.ft.)

This floor plan is for illustrative purposes only. It is not drawn to scale. Any measurements, floor areas (including any total floor area), openings and orientations are approximate. No details are guaranteed, they cannot be relied upon for any purpose and do not form any part of any agreement. No liability is taken for any error, omission or misstatement. A party must rely upon its own inspection(s). Powered by www.Propertybox.io



# Area Map



# EPC Rating

Energy Efficiency Rating		Current	Potential	Environmental Impact (CO <sub>2</sub> ) Rating		Current	Potential
Very energy efficient - lower running costs				Very environmentally friendly - lower CO <sub>2</sub> emissions			
(92 plus) A				(92 plus) A			
(81-91) B				(81-91) B			
(69-80) C				(69-80) C			
(55-68) D				(55-68) D			
(39-54) E				(39-54) E			
(21-38) F				(21-38) F			
(1-20) G				(1-20) G			
Not energy efficient - higher running costs				Not environmentally friendly - higher CO <sub>2</sub> emissions			
England & Wales		EU Directive 2002/91/EC		England & Wales		EU Directive 2002/91/EC	

79

82

# Viewing

Please contact our office using the details provided on the final page if you are interested in booking a viewing or require further information.

NOTICE: Stephenson Browne for themselves and for the vendors or lessors of this property whose agents they are give notice that: (1) the particulars are set out as a general guideline only for the guidance of intending purchasers or lessees, and do not constitute, nor constitute part of, an offer or contract; (2) all descriptions, dimensions, references to condition and necessary permissions for use and occupation, and other details are given in good faith and are believed to be correct but any intending purchasers or tenants should not rely on them as statements or representations of fact but must satisfy themselves by inspection or otherwise as to the correctness of each theme; (3) no person in the employment of Stephenson Browne has any authority to make representation or warranty whatever in relation to this property. (4) fixtures & fittings are subject to a formal list supplied by the vendors solicitors. Referring to: Move with Us Ltd Average Fee: £123.64

T: 01270 883130 E: alsager@stephensonbrowne.co.uk

www.stephensonbrowne.co.uk