
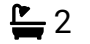



Gracelands, Stainton Way, Stainton

Guide Price £900,000

 5  2  2



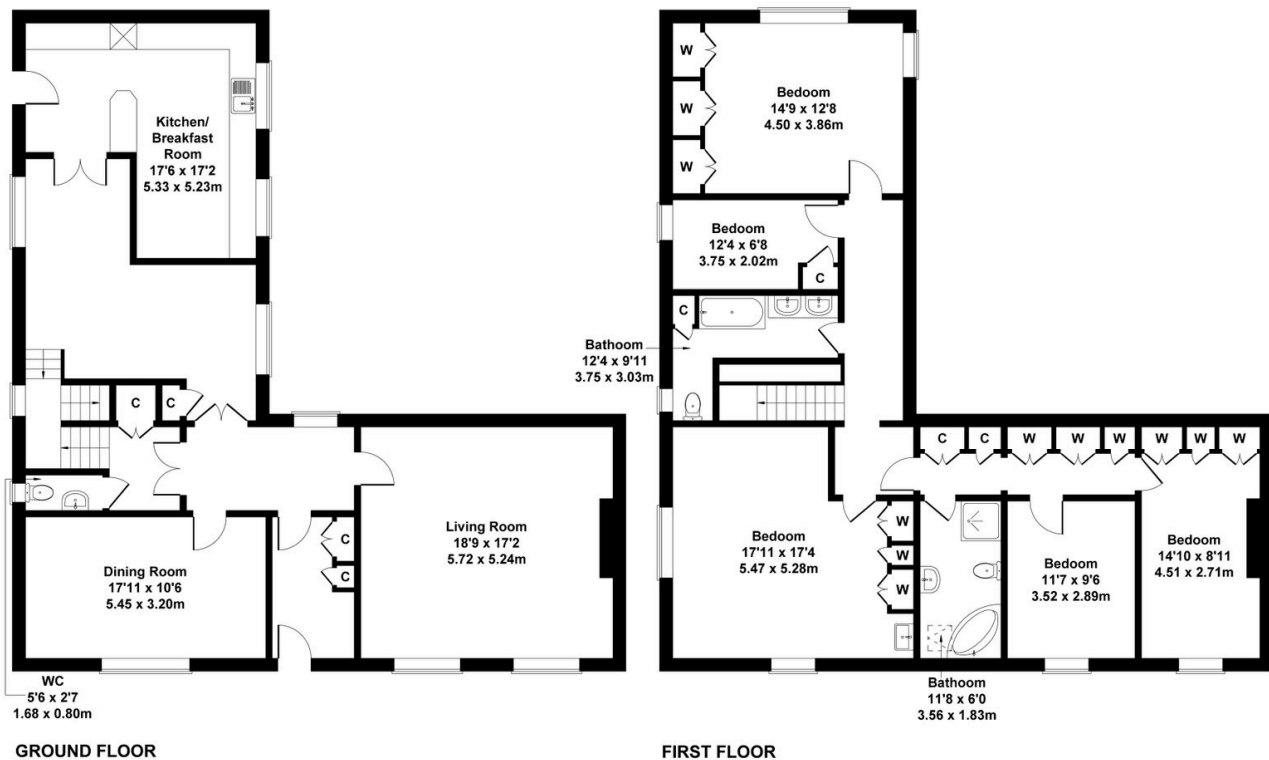
The Yorkshire Property Agency is delighted to introduce this fabulous unmodernised detached family home situated in approximately 4.5 acres in the popular Teesside area of Stainton. Boasting huge potential and multiple paddocks for equestrian use, early viewings are advised to avoid disappointment.

Key Features

- Stunning unmodernised five-bedroom period property
- Substantial landscaped gardens at the rear
- Situated in approximately 4.5 acres
- Chain-free sale
- Outbuildings including stables
- Long secure private drive
- Off-street parking for multiple cars
- Detached garage
- Two grass paddocks
- Council tax band G

Gracelands, Stainton

Approximate Gross Internal Area
2540 sq ft - 236 sq m



Not to Scale. Produced by The Plan Portal 2026
For Illustrative Purposes Only.