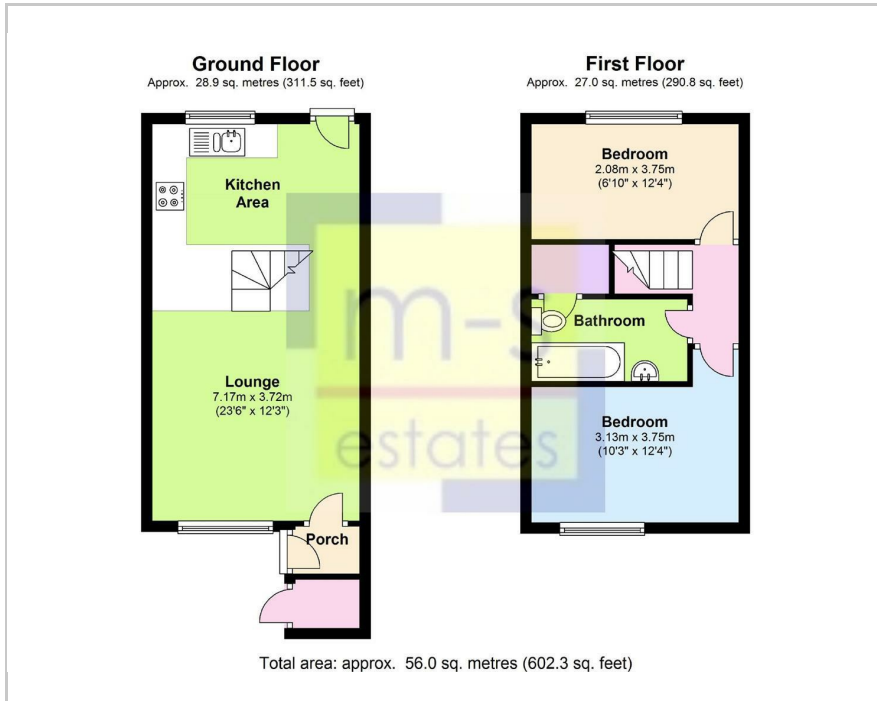


The logo for 'ms estates' is located in the top right corner. It consists of the lowercase letters 'ms' in a bold, dark blue font, with a thin red horizontal line underneath. Below this, the word 'estates' is written in a smaller, dark blue font. The entire logo is set against a yellow square background with dark blue corners.

10 Grinsbrook, Nottingham, NG7 2FA
£252 Per Week

A large, semi-transparent watermark of the 'ms estates' logo is visible in the bottom right corner of the image.

Floor Plan



- STUDENT ACCOMMODATION
- 2 Double bedrooms
- Well presented throughout
- Spacious living room
- Recently refurbished
- Garden
- Driveway
- Quiet location
- Close to Jubilee Campus



Area Map



Energy Efficiency Rating

	Current	Potential
Very energy efficient - lower running costs		
(92 plus) A		
(81-91) B		
(69-80) C		
(55-68) D	63	
(39-54) E		
(21-38) F		
(1-20) G		
Not energy efficient - higher running costs		
England & Wales	EU Directive 2002/91/EC	

These particulars, whilst believed to be accurate are set out as a general outline only for guidance and do not constitute any part of an offer or contract. Intending purchasers should not rely on them as statements of representation of fact, but must satisfy themselves by inspection or otherwise as to their accuracy. No person in this firm's employment has the authority to make or give any representation or warranty in respect of the property.

3 Park Street, Derby Road, Lenton, Nottingham, NG7 1RR

Tel: 0115 9120061 Email: mail@ms-estates.co.uk www.ms-estates.co.uk