



Greenland Quay, SE16

£575,000

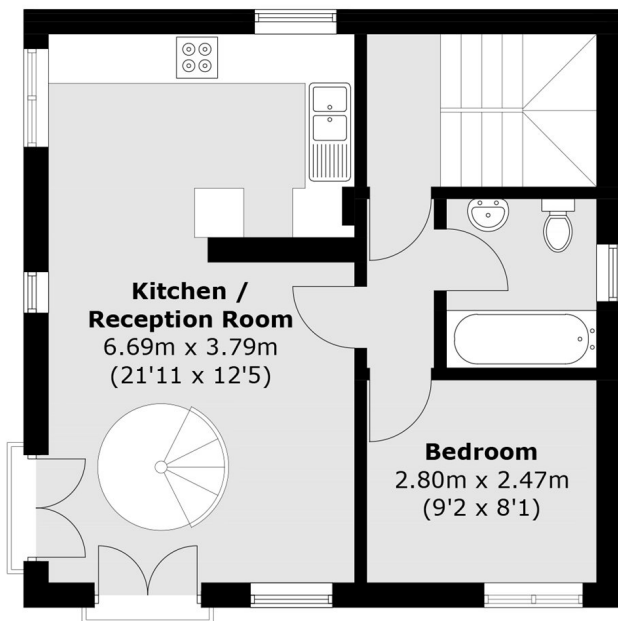
Overlooking Greenland Quay, this three double bedroom split level flat boasts a large open plan kitchen living space, additional mezzanine floor, two bathrooms, ample storage, parking and is being sold chain free.

Greenland Quay is located only 0.4 miles from Surrey Quays station and 0.7 miles from Canada Water station. A wide range of shops, cafés, delis and restaurants are close by.

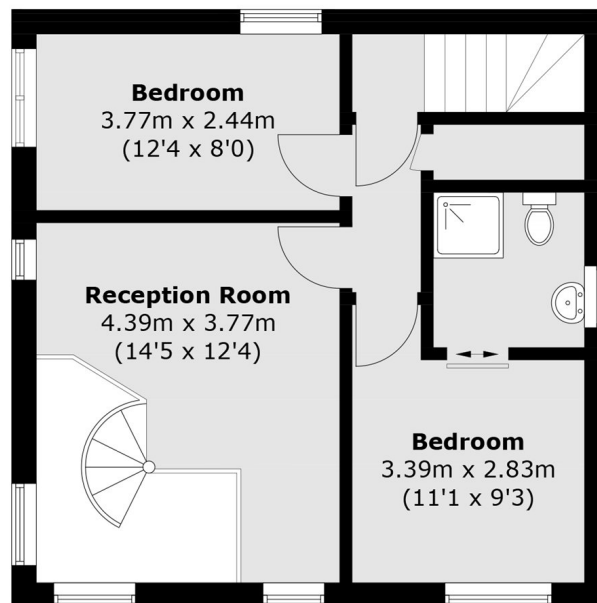
Features

- Three Double Bedrooms
- Two Bathrooms
- Split Level Apartment
- Permit Parking Available
- Long Lease
- Chain Free

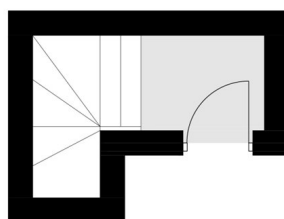
Greenland Quay, London, SE16



First Floor



Second Floor



Ground Floor

Total area (approx.): 93.9 sq. m (1,010.6 sq. ft)