

## Fitzjohns Avenue, NW3

### £850,000

Refurbished top-floor two-bedroom flat in the heart of Hampstead with a shared garden, offering bright, well-proportioned interiors and impressive London views.

Includes a spacious reception room, separate fitted kitchen, two double bedrooms, dressing room, and family bathroom. Situated in a converted period house moments from Hampstead Village, with its shops, cafés, restaurants, and excellent transport links.

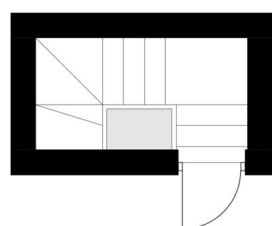
Swiss Cottage station (Jubilee line) is approximately 0.4 miles away, and Finchley Road station (Jubilee and Metropolitan lines) is around 0.5 miles away, providing fast and direct access to the West End and the City.

Hampstead underground station (Northern line) is also conveniently located just 0.3 miles away.

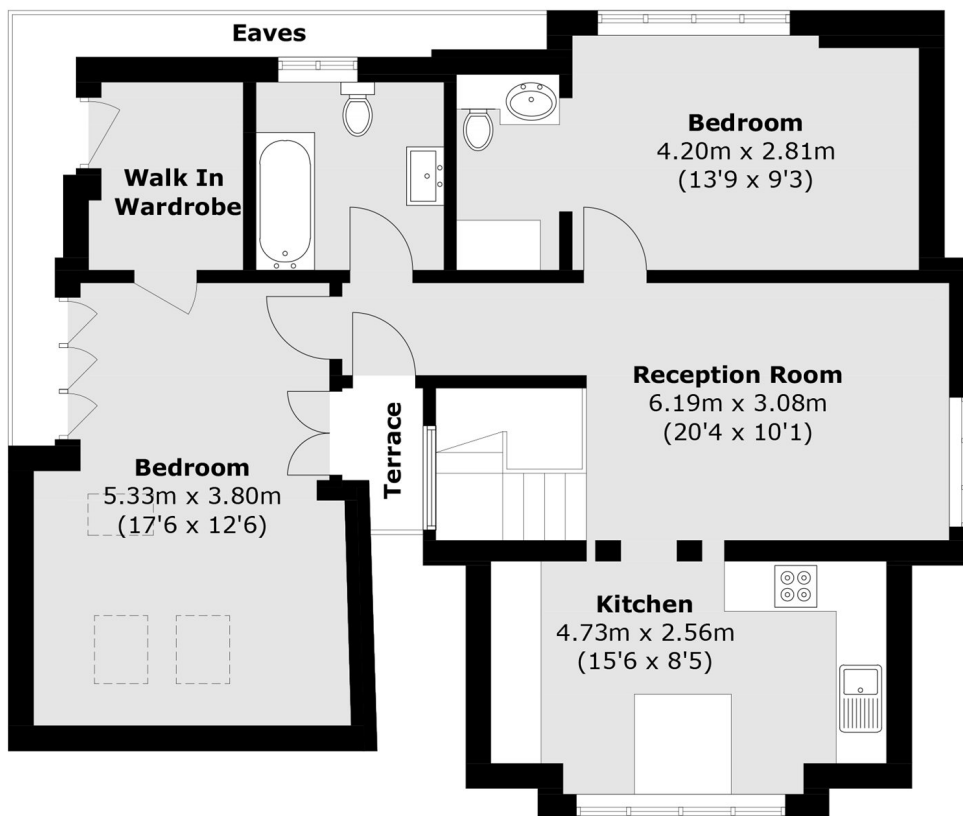
### Features

Period Conversion  
Top Floor  
Amazing Views  
Fully Refurbished  
Close to Transport  
Shared Garden

# Fitzjohns Avenue, London, NW3



**Second Floor**



**Third Floor**

Total area (approx.): 82.1 sq. m (883.7 sq. ft)  
(Excluding Eaves)  
Terrace area (approx.): 1.4 sq. m (15.1 sq. ft)