



The Exchange
36, SW1P

CHESTERTONS





Just been refurbished, first floor apartment in this portered building with parking and water rates included. Two bedrooms, shower room en-suite, bathroom, reception room with wooden floors and open plan to the kitchen. Exclusive to Chestertons.

- Well presented second floor apartment
- 2 Bedrooms, 2 Bathrooms, 1 Reception
- Inclusive of water rates
- Portered building
- Exclusive to Chestertons

£3,500 pcm

Additional tenant charges apply (fees apply to non-AST tenancies only)

Tenancy Agreement Fee: £300

References per Tenant/Guarantor: £60

Inventory check (approx. £100 – £250 inc. VAT)

chestertons.co.uk/property-to-rent/applicable-fees

Energy Efficiency Rating		Current	Potential
100-105	A		83
81-100	B		
62-81	C	69	
43-62	D		
25-43	E		
10-25	F		
1-10	G		

Not energy efficient - higher running costs

EU Directive 2002/91/EC

England, Scotland & Wales

Minimum Term: 12 months
Deposit Required: £4,038.46
Local Authority: City of Westminster
Council Tax Band: F
EPC Rating: C
Furnished

Chestertons Westminster & Pimlico Lettings

105 Wilton Road
London
SW1V 1DZ

westminster@chestertons.co.uk

02030408220

chestertons.co.uk

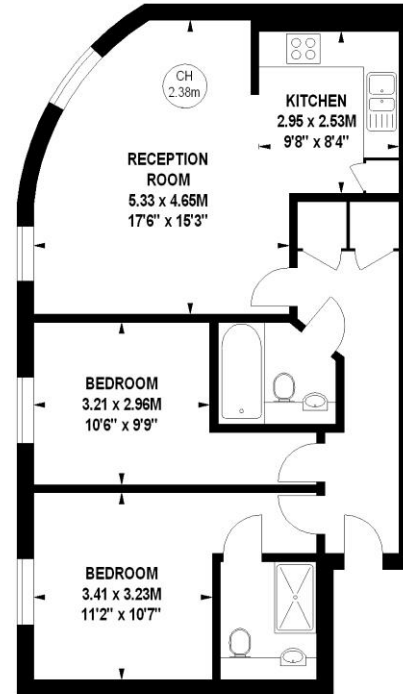
The Exchange, SW1P

Approximate gross internal area

73.48 sq m / 791 sq ft



Key :
CH - Ceiling Height



First Floor

The floor plan is not to scale and measurements and areas shown are approximate and therefore should be used for illustrative purposes only. The plan has been prepared in accordance with the RICS code of Measuring Practice and whilst we have confidence in the information produced, it must not be relied on. If there is any aspect of particular importance, you should carry out or commission your own inspection of the property.
Copyright of FeaturePRO.

