



## Stratton Close, TW3

£649,950

We are delighted to bring to the market this impressive four/ five bedroom house positioned within a peaceful cul-de-sac in a sought after and popular location. Arranged over two floors and offering almost 1,380 square feet of generous living space, this impressive home provides exceptionally versatile accommodation throughout.

Stratton Close is a sought after location in the heart of Hounslow, ideally positioned between Osterley, Hounslow West and Hounslow Central Underground Stations (Piccadilly Line), providing excellent connections to Heathrow Airport and central London. The property is also within easy walking distance of the High Street, local parks and a range of amenities. The highly reputable and outstanding St. Mark's Catholic School and Wellington Primary School are near by.

### Features

- Five/Four Bedroom House
- Three Bathrooms
- Driveway For Multiple Cars
- Generous South-Facing Garden
- Scope To Extend (STPP)
- Popular Location



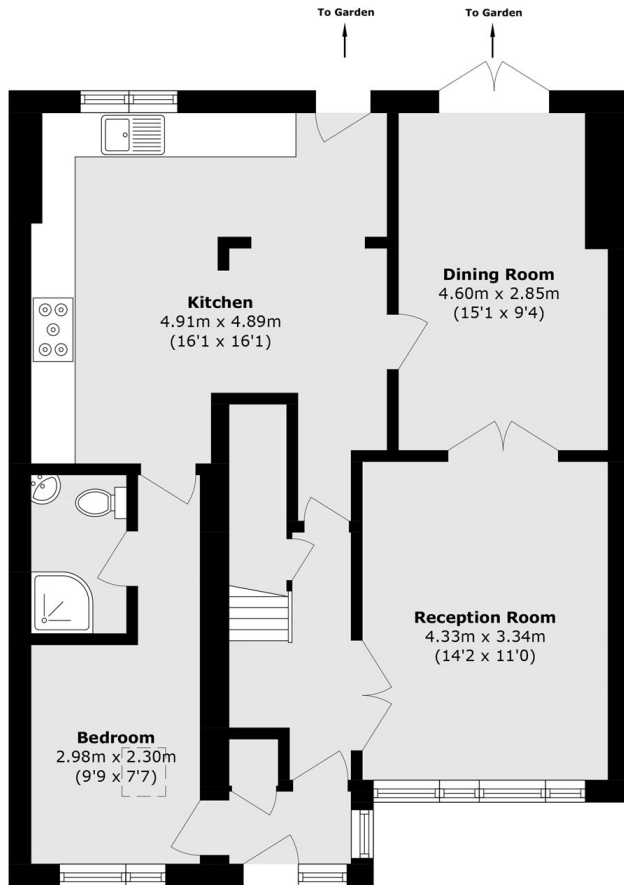
## Stratton Close, TW3

The property comprises four/five well proportioned bedrooms, while two bedrooms enjoy the added convenience of en suite shower rooms. The ground floor features two spacious reception rooms, providing ample space for both family living and entertaining, together with a fitted kitchen/breakfast room and a family bathroom.

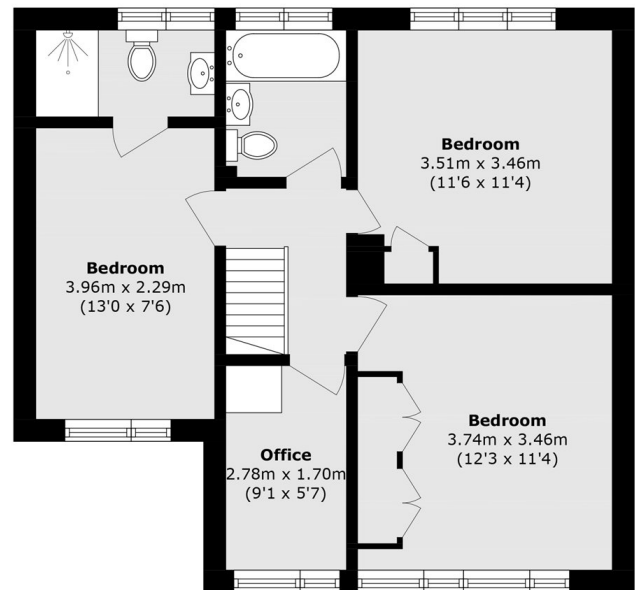
Externally, the property boasts a private south-facing rear garden, ideal for outdoor relaxation and family enjoyment, along with off-street parking for multiple cars. Further benefits include gas central heating throughout and a roof that has been upgraded in accordance with Heathrow Airport sound insulation guidelines, complete with a 25 year warranty for added peace of mind.



# Stratton Close, Hounslow, TW3



**Ground Floor**



**First Floor**

Total area (approx.): 128.2 sq. m (1379.9 sq. ft)