

## Twickenham Road, TW7

£1,695 Per calendar month

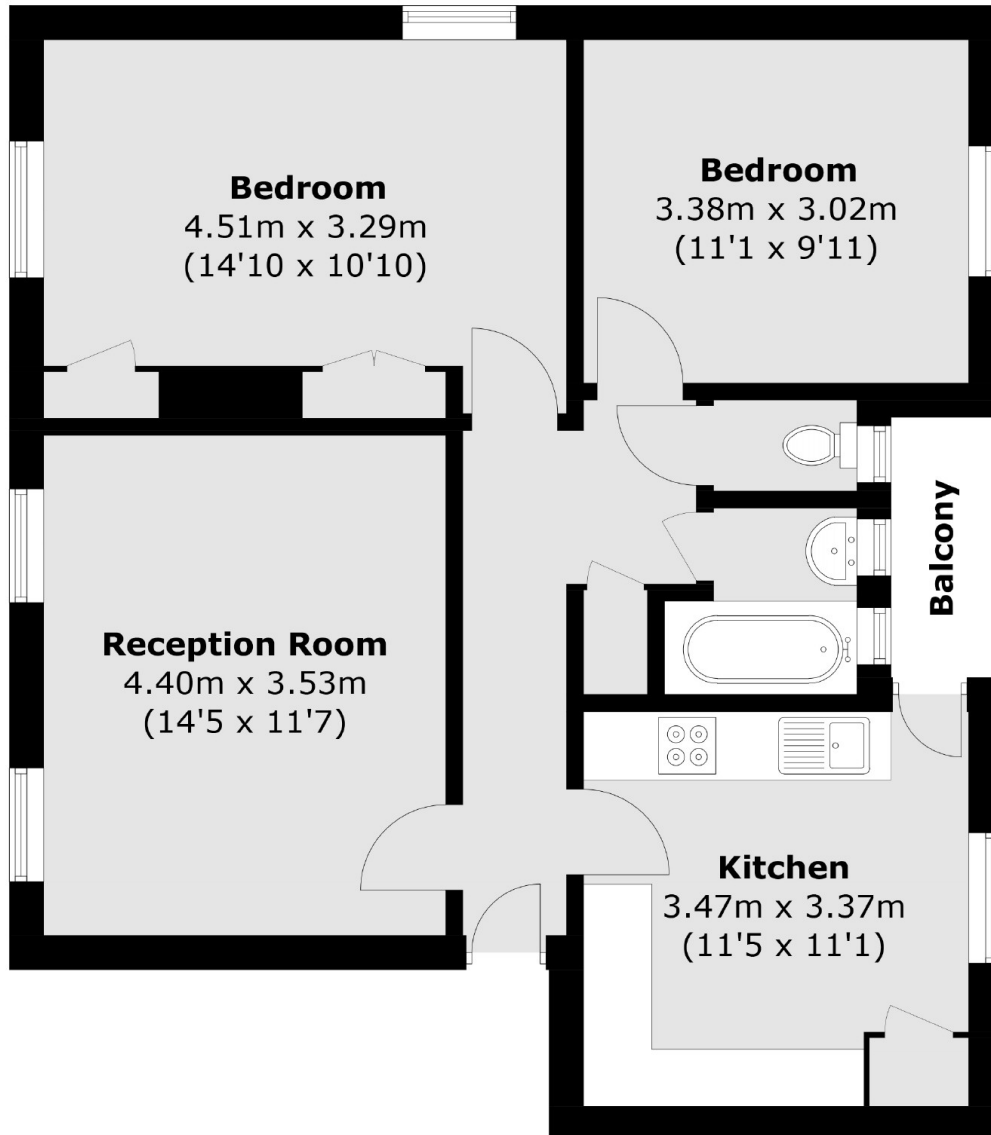
A spacious and well presented two double bedroom apartment offering generous living accommodation throughout, featuring a bright reception room with wood flooring, a separate eat-in kitchen, two well proportioned double bedrooms and a family bathroom,

Ideally located for Isleworth and Twickenham stations, this property is close to the River Thames, local shops and the charming area of Old Isleworth. Just moments from the village high street with its variety of cafés, shops and schools.

### Features

- Two Double Bedrooms
- Unfurnished
- Wood Flooring Throughout
- Eat-In-Kitchen
- Spacious Reception Room
- Village Location

# Twickenham Road, Isleworth, TW7



Total area (approx.): 66.4 sq. m (714.7 sq. ft)  
Balcony: 2.1 sq. m (22.6 sq. ft)