



5 Corner Lane, Bicton Heath, Shrewsbury, SY3 5BZ

4 bedroom detached house — £375,000 Freehold

5 Corner Lane, Bicton Heath, Shrewsbury, SY3 5BZ

£375,000 Freehold — 4 bedroom detached house

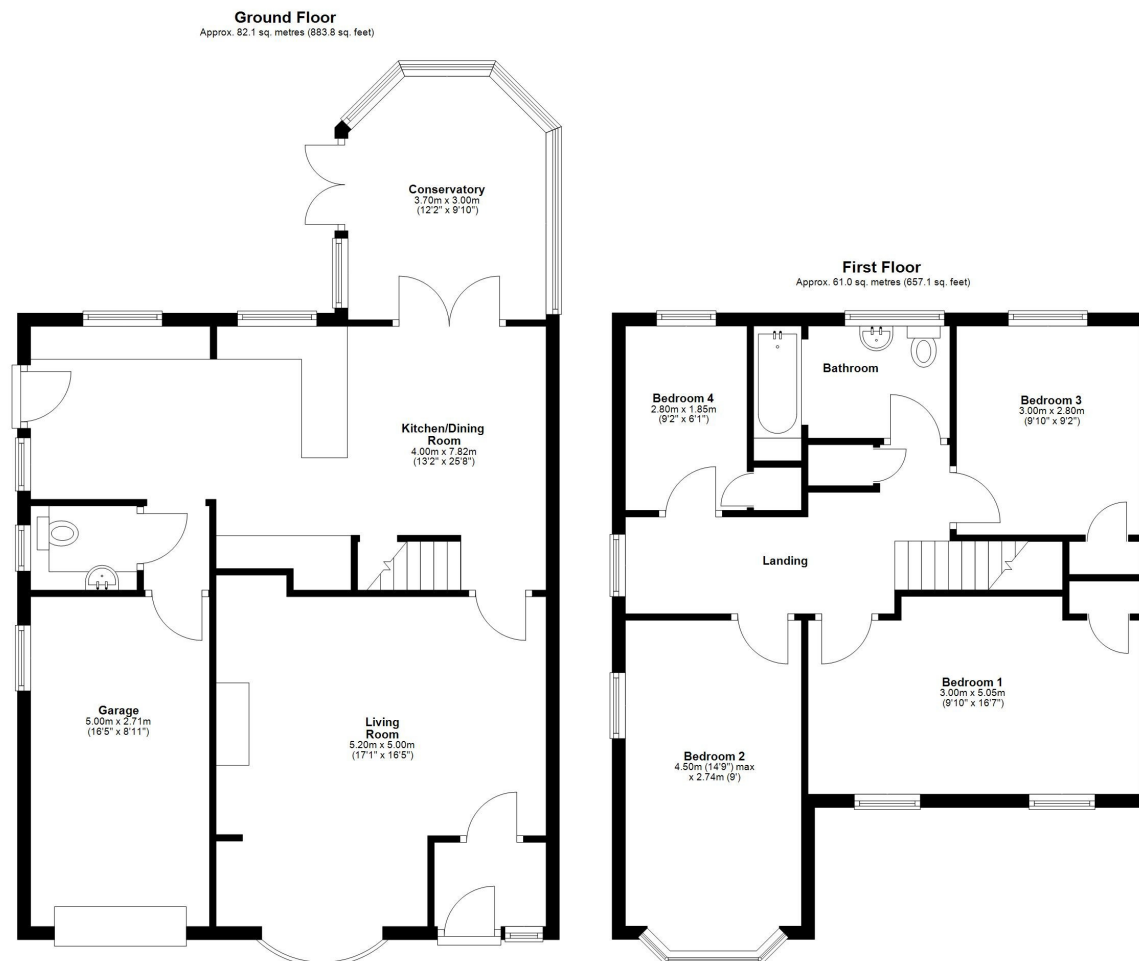
sales@cgpooks.co.uk

Occupying a lovely plot, quietly situated within a popular residential area, this well-designed and improved detached family house offers very practical accommodation, with a fantastic private rear garden, driveway parking, and integral garage.

KEY FEATURES

- Entrance porch opening to a large living room with feature fireplace and bow window to front
- Impressive open plan kitchen/dining room, complete with integrated appliances, breakfast bar, access to side and glazed doors to the conservatory
- A rear hall connects to both the cloakroom/WC and integral garage
- On the first floor are four bedrooms and a generous family bathroom with shower
- uPVC double glazed windows and gas fired central heating
- Attractive private rear garden, mainly laid to lawn with paved sun terraces, planted borders, timber garden stores, and gated access to side
- To the front of the property is a driveway providing parking, as well as an additional lawned garden
- A very quiet and convenient location within a cul-de-sac, just a short walk from an excellent range of amenities, the Royal Shrewsbury hospital, road links via the bypass, primary and secondary schools, and less than ten minutes from the town centre

Coopergreenpooks.co.uk



Total area: approx. 143.2 sq. metres (1541.0 sq. feet)









Cooper Green Pooks
3 Barker Street
Shrewsbury
SY1 1QF

www.cgpooks.co.uk
sales@cgpooks.co.uk
01743 276666



5 Corner Lane, Bicton Heath, Shrewsbury, SY3 5BZ

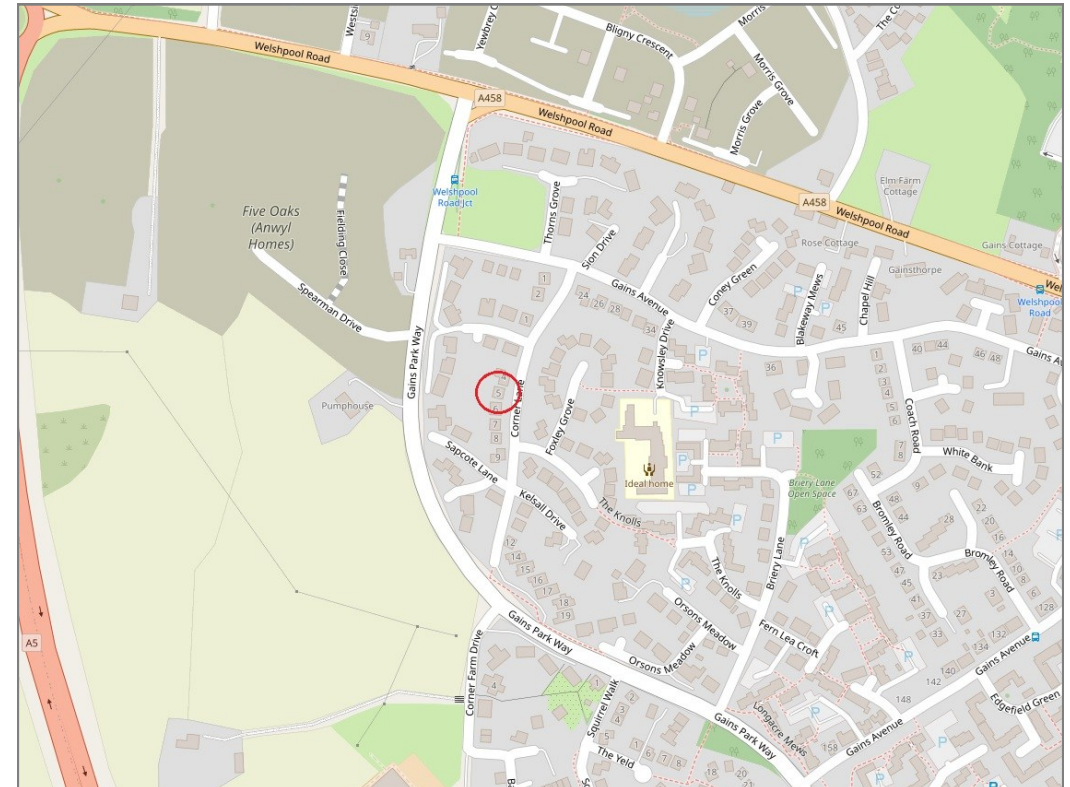
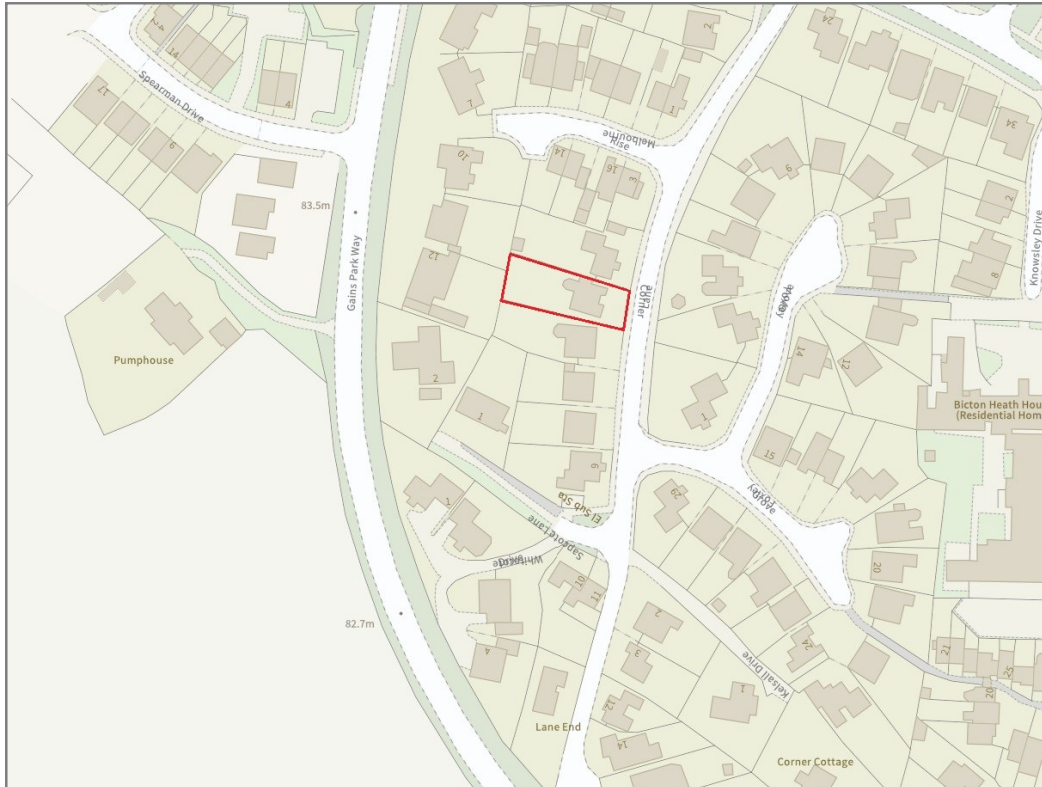
£375,000 Freehold — 4 bedroom detached house

sales@cgpooks.co.uk

rightmove

onTheMarket.com

RICS
Regulated by RICS



BOUNDARIES NOT CONFIRMED

Tenure	Freehold
Local Authority	Shropshire Council
Council Tax	Band D
EPC Band	Band D
Services	All mains services are connected

Expert mortgage advice available

3 Barker St, Shrewsbury SY1 1QF

Cooper Green Pooks
01743 276666



Your home may be repossessed if you do not keep up repayments on your mortgage.

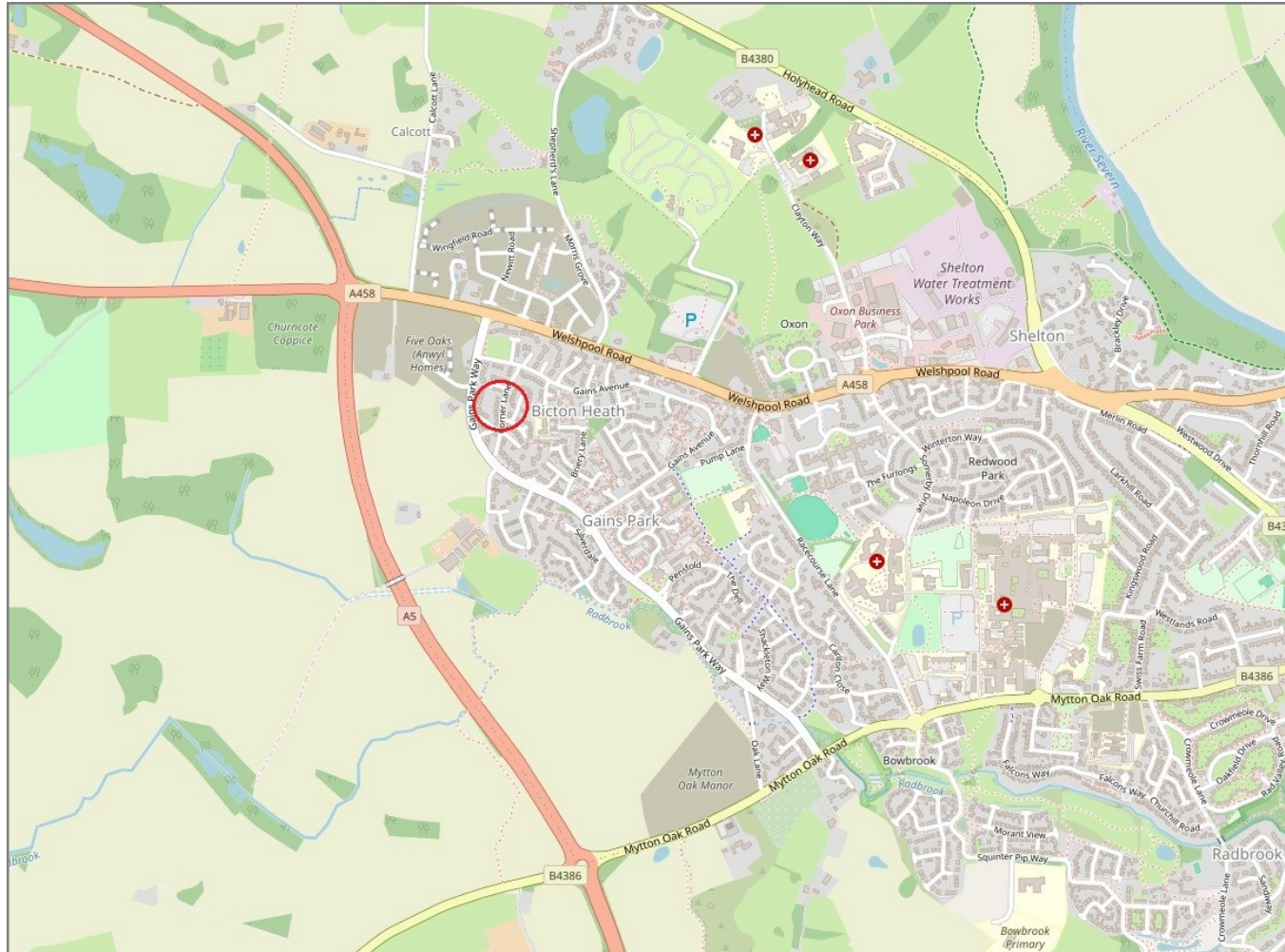
There may be a fee for mortgage advice. The actual amount you pay will depend upon your circumstances. The fee is up to 1% but a typical fee is 0.3% of the amount borrowed.

5 Corner Lane, Bicton Heath, Shrewsbury, SY3 5BZ

Coopergreenpooks.co.uk

£375,000 Freehold — 4 bedroom detached house

sales@cgpooks.co.uk



IMPORTANT NOTICE: Cooper Green Pooks for themselves and for the lessors or vendors of this property whose agents they are give notice that: 1 No appliances, services or service installations have been tested and no warranty as to suitability or serviceability is implied. Any prospective purchaser or lessee is advised to obtain verification from their surveyor or solicitor. 2. The particulars are set out as a general outline only for the guidance of the intended purchasers or lessees and do not constitute, nor constitute part of, an offer or contract. 3. All descriptions, reference to condition and necessary permissions for use and occupation and other details are given in good faith and are believed to be correct but any intending purchasers or lessees should not rely on them as statements or representation of fact but satisfy themselves by inspection or otherwise as to the correctness of each of them. 4. No person in the employment of Cooper Green Pooks has any authority to make or give any representation or warranty whatsoever in relation to this property. 5. All rentals and prices are quoted exclusive of Stamp Duty, legal and surveyors fees and any other associated purchasers or lessees costs. 6. Floor plans are indicative only and should not be relied on. 7. The plan showing the boundary of the property is indicative only and has not been checked against the legal title so should not be relied on. 8. All dimensions, floor areas and site areas are only approximate and should not be relied on. Dimensions are generally maximum room dimension.