



Bramham Gardens, SW5

£975,000

Overlooking a highly desirable garden square, this bright and spacious two-bedroom flat offers an exceptional sense of light throughout. Situated on the top floor of an attractive mid-terrace red-brick Victorian building, the property benefits from a generous private roof terrace with beautiful leafy views.

Bramham Gardens is a prime location within close proximity to Gloucester Road, Earls Court and South Kensington Station as well as all the shops, restaurants and local amenities on offer. Kensington Gardens are also within reach.

Features

- No Ongoing Chain
- Roof Terrace Overlooking Communal Gardens
- Highly Sought After Location
- Abundance Of Natural Light
- Walking Distance Of Station
- Ample Storage Space



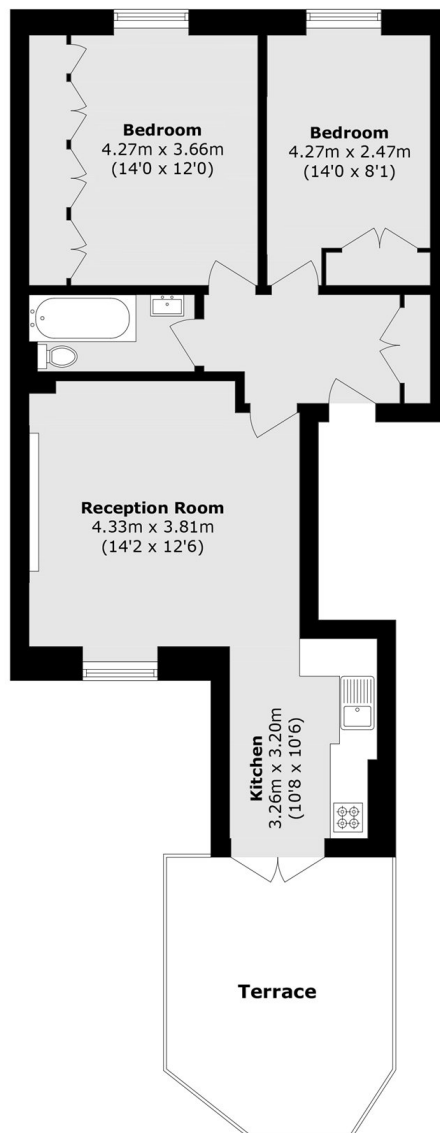
Bramham Gardens, SW5

The property features a generous reception room, thoughtfully arranged to provide both comfortable living and dining space, making it ideal for entertaining as well as everyday use. The separate kitchen is modern and fully fitted, offering a range of integrated appliances, sleek cabinetry and ample worktop space, perfect for those who enjoy cooking. The bedrooms are well-proportioned and quietly positioned, each benefiting from fitted storage and a relaxing atmosphere. The principal bedroom in particular offers excellent dimensions and natural light, while the additional bedroom provides flexibility for guests, a home office or further accommodation.

The bathroom is finished to a high standard, enhancing the overall sense of style and practicality within the flat. Further benefits include well-maintained communal areas, secure entry and the inherent charm of a period conversion, combining character features with modern upgrades.



Bramham Gardens, London, SW5



Total area (approx.): 67.2 sq. m (723.3 sq. ft)
Terrace area (approx.): 15.1 sq. m (162.5 sq. ft)

Fourth Floor