

Charlotte Place, W1T

£692 Per week

A spacious one double bedroom duplex to rent in the heart of Fitzrovia with a sky light allowing for plenty of natural light and a private terrace which is perfect for summer entertaining.

Charlotte's Place is a vibrant and trendy part of Fitzrovia. The property is a short walk away from many shops, bars and restaurants including the trendy Japanese Roka.

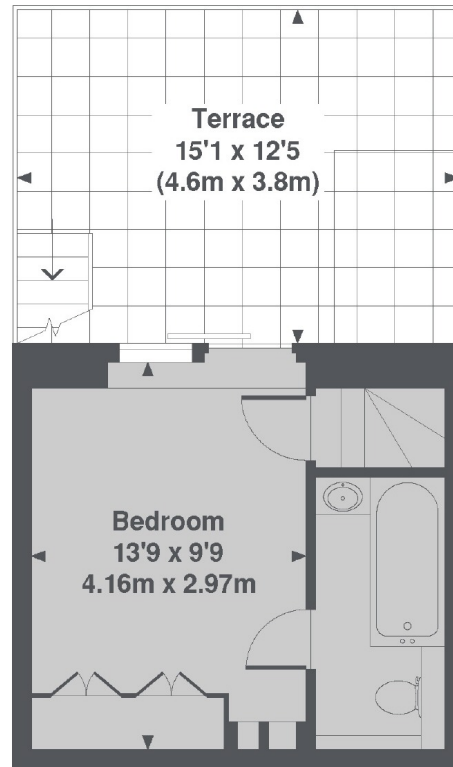
Features

- One Bedroom
- Wood Floors
- Wooden Floors
- Open Plan Kitchen
- Private Terrace
- Split level

Charlotte Place, London, W1T



Lower Ground Floor



Raised Ground Floor

Charlotte Place, W1T
Total Approx. Floor area 574 Sq. Ft. (53.3 Sq. M.)