



## Lower Square, TW7

£2,150 Per calendar month

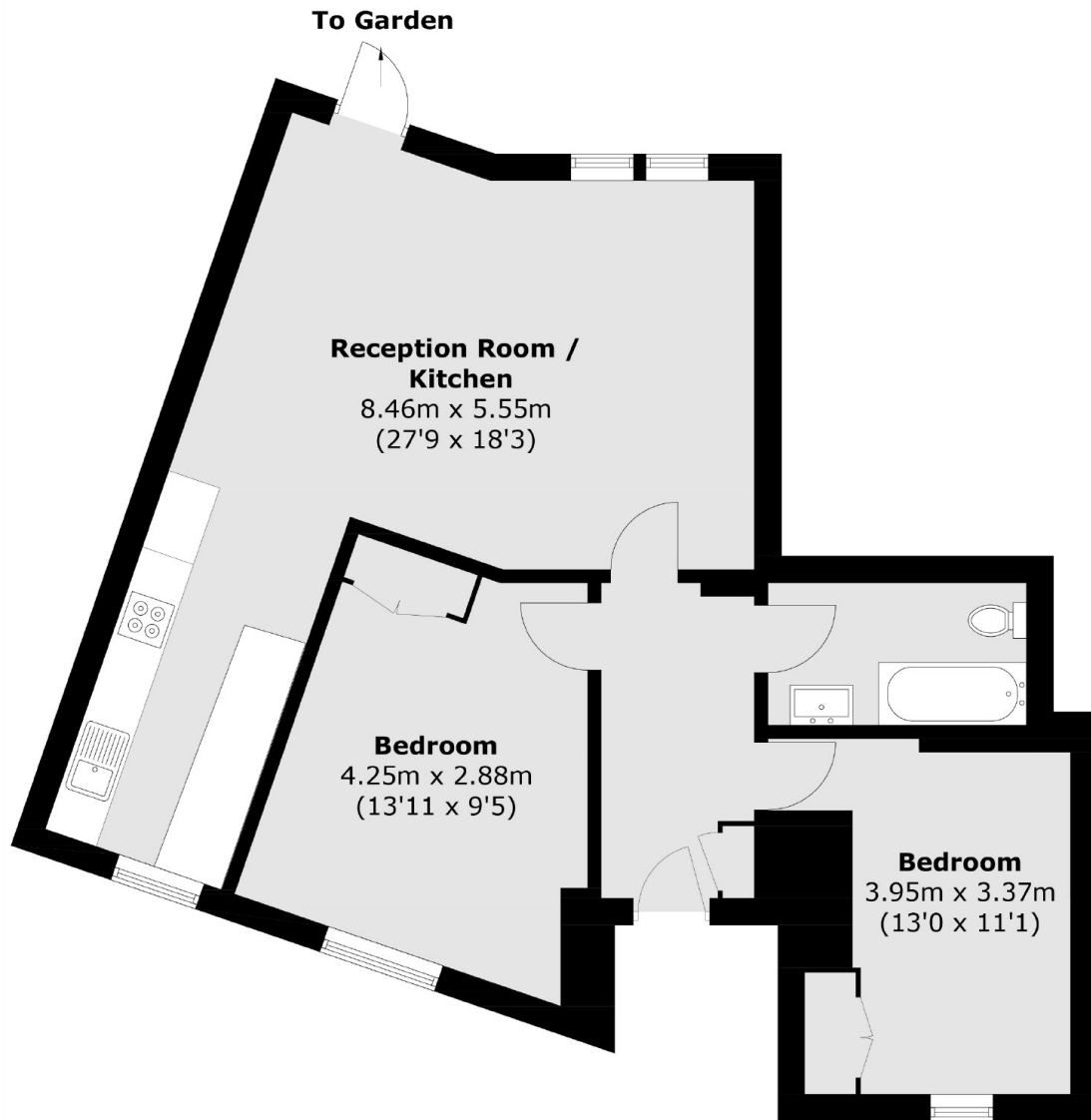
A beautifully presented two bedroom apartment situated within a sought-after riverside development in Old Isleworth. The property offers two double bedrooms, a modern kitchen, bathroom and a private patio garden. Further benefits include an allocated parking space within a secure gated development and direct access to the River Thames and towpath.

Lower Square is ideally positioned close to the riverside pubs and restaurants of Old Isleworth. The property is moments from the Thames towpath offering walks through to Richmond town centre with its extensive range of amenities, shops and transport links. The apartment is also just a short distance from the open green spaces and historic parkland of Syon Park.

### Features

- Riverside Development
- Two Double Bedrooms
- Private Entrance
- Modern Kitchen
- Private Patio Garden
- Allocated Parking Space

# Lower Square, Old Isleworth, TW7



Total area (approx.): 74.7 sq. m (804.0 sq. ft)