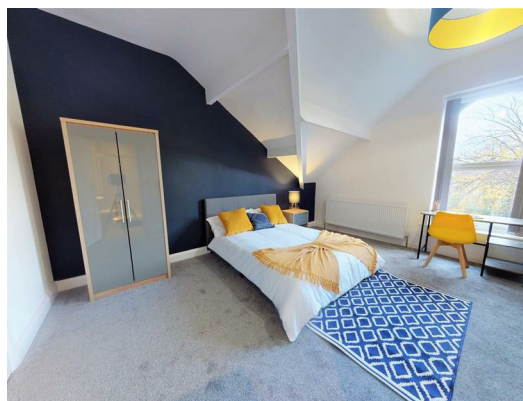




Room 7, 61 Kirkgate, Shipley, West Yorkshire, BD18 3LU £535 Per Month

VIRTUAL TOUR AVAILABLE!

61 Kirkgate is a splendid Victorian Terrace located close to Saltaire and Shipley Town Centre. The property comprises of 7 generously sized rooms all with en-suite and finished to an impeccable standard. The building boasts period features and high ceilings whilst the rooms and kitchen have high quality, modern fixtures, fittings and furniture. Superfast BT Broadband and **BILLS INCLUDED**.



ROOM

The penthouse room is available and is located on the second floor. The room comes furnished and has a feature vaulted ceiling with Velux window. There is a further double glazed window with pleasant outlook to the front aspect. En-suite shower room with shower within a glass panelled screen, low flush W.c and hand wash basin.

COMMUNAL KITCHEN

High quality and stylish fitted kitchen with a range of appliances and dining space to cater for all residents.

