



Cobalt Court 38 Millharbour, London, E14 9JT
£500 Per week

 1
  1
  1
  B

Districts London are proud to present this one-bedroom apartment which includes 24hr concierge and A residents' gym. The apartment comprises a double bedroom, built-in storage, family bathroom, modern kitchen and open plan reception.

Crafted with a focus on contemporary style and sophistication, this apartment boasts elegant interiors and great facilities whilst being situated 2 minutes' walk from South Quay DLR station.

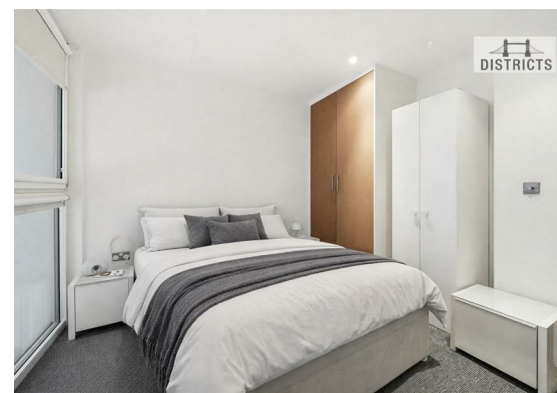
Furthermore, residents can access Canary Wharf (Jubilee & Elizabeth lines) accessing London and beyond in a matter of minutes.

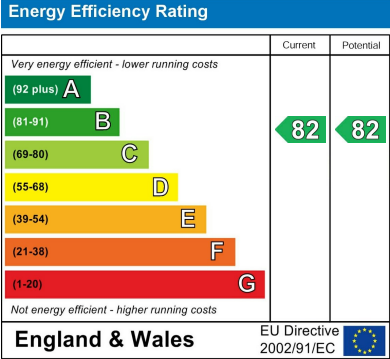
*Photos have been digitally dressed for example purposes.

Council Tax Band: D, Tower Hamlets
Change of contract fee: £50 including VAT
Holding Deposit - £500, 1 weeks rent, subject to agreed offer)

Electricity supply – Mains | Heating, Hot Water – Electric | Water Supply & Sewerage – Mains | Lift Access
To check broadband and mobile phone coverage please visit Ofcom
To check planning permission please visit Tower Hamlets Council Website, Planning & Building Control







These particulars, whilst believed to be accurate are set out as a general outline only for guidance and do not constitute any part of an offer or contract. Intending purchasers should not rely on them as statements of representation of fact, but must satisfy themselves by inspection or otherwise as to their accuracy. No person in this firms employment has the authority to make or give any representation or warranty in respect of the property.