

34 Chatburn Road, Chorlton, Manchester, M21 0XW

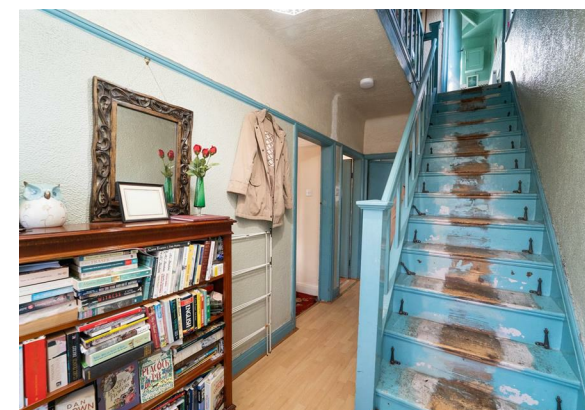


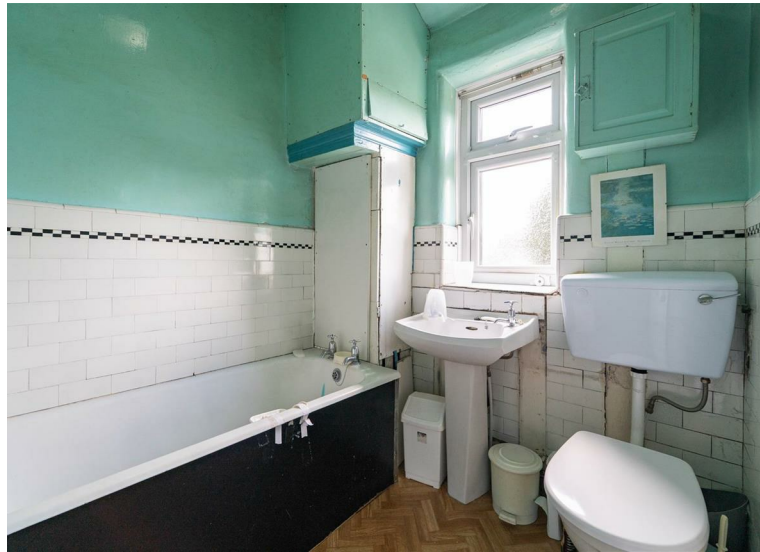
**JP&Brimelow**  
ESTATE AGENTS

# Offers In The Region Of £385,000

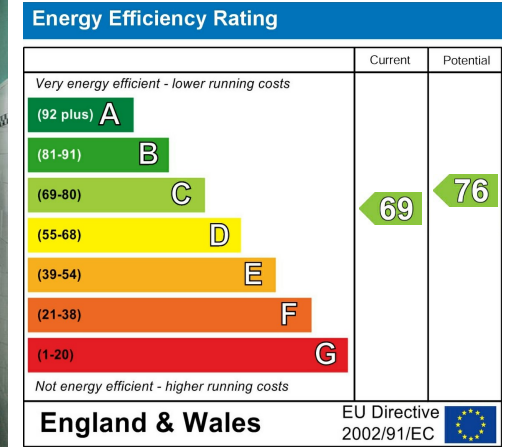
 3  1  1  C

\*\*\*VIDEO TOUR AVAILABLE\*\*\* A traditional, bay fronted, THREE BEDROOM semi-detached property, located on a popular residential road off Kings Road. IN NEED OF UPDATING THROUGHOUT. Located just a short distance from the vibrant bars, restaurants, and cafes on Beech Road, this property is also close to Chorlton Park, excellent primary and secondary schools, and the Metrolink Station on St Werburgh's Road, offering direct connections to the City Centre, Media City, and Manchester Airport. In brief the property consists of a porch, an entrance hall with useful storage cupboard, a dining room with bay window to the front aspect, a lounge with views into the rear garden, and a kitchen which allows access out into the rear garden. Stairs leading to the first-floor landing reveal three bedrooms, and a three-piece bathroom suite. The property benefits from gas fired central heating, both front and rear enclosed gardens, and a useful garage.



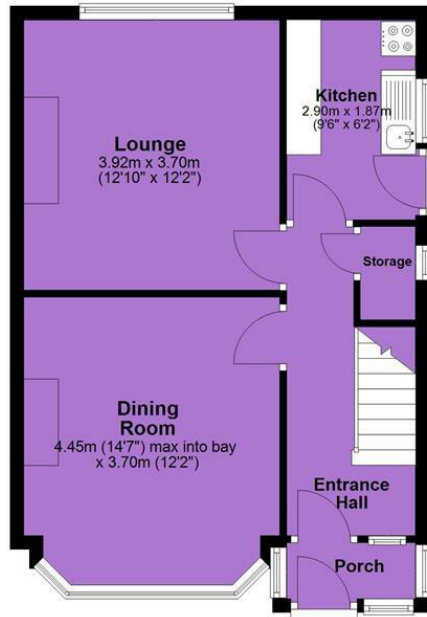
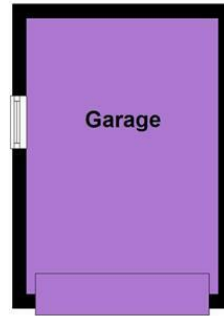


## EPC Chart

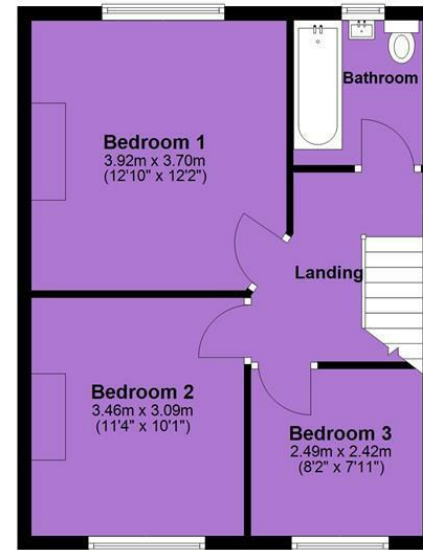


Tenure: **Freehold** Council Tax Band: **C**

### Ground Floor



### First Floor



JP & Brimelow Estate Agents Ltd  
430 Barlow Moor Road, Manchester, M21 8AD  
Tel: 0161 8822233  
E: sales@jpbrimelow.co.uk www.jpandbrimelow.co.uk



**JP & Brimelow**  
ESTATE AGENTS

NOTICE: JP & Brimelow Estate Agents Ltd for themselves and for the vendors or lessors of this property whose agents they are give notice that:

- (i) the particulars are set out as a general outline only for the guidance of intending purchasers or lessees, and do not constitute, nor constitute part of, an offer or contract;
- (ii) all descriptions, dimensions, references to the condition and necessary permissions for use and occupation, and other details are given in good faith and are believed to be correct but any intending purchasers or tenants should not rely on them as statements or representations of fact but must satisfy themselves by inspection or otherwise as to the correctness of each of them;
- (iii) no person in the employment of JP & Brimelow Estate Agents Ltd has any authority to make or give any representation or warranty whatever in relation to this property.

jpandbrimelowstateagents

@jpandbrimelow