

FLETCHERS

ESTATE AGENTS



Hadley Gardens, W4

£2,500,000

An exceptional five bedroom semi detached home on one of Chiswicks most sought after roads.



This stunning house offers a particularly wide footprint and spacious rooms, with attention paid to retaining the original features throughout including fireplaces in most rooms, original Victorian tiling and coving. The ground floor consists of an impressive bay fronted reception room, a fantastic open plan kitchen/family room which leads onto a conservatory and a generous garden. There is also a separate utility room, and a cellar.

Whilst the house is already in great condition throughout, for those planning ahead there is further potential to extend both into the garden with a rear extension, and to add a rear dormer to the top floor.

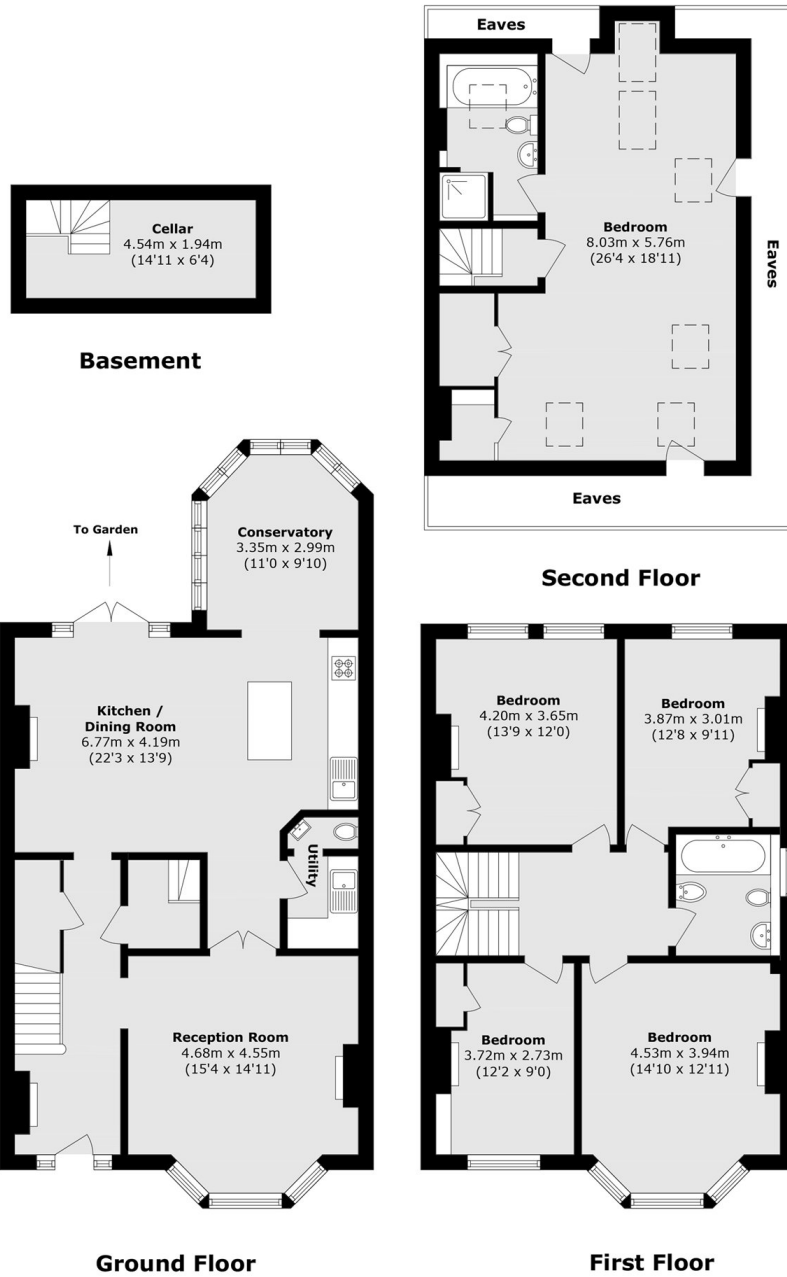
Perfectly located in the heart of Chiswick, Hadley Gardens is a lovely tree-lined residential street located within a short walk of Chiswick High Road's shops, cafés and restaurants. Transport links include Turnham Green and Chiswick Park stations, and the A4/M4 for routes in and out of London.

- Semi Detached • Five Bedrooms • Two Bathrooms •
- Spacious Reception Rooms • Generous Garden • Period Features •



FLETCHERS

ESTATE AGENTS



Total area (approx.): 208.4 sq. m (2243.2 sq. ft)
(Excluding Eaves)

Fletchers Chiswick Turnham Green Sales
58 Turnham Green Terrace
London
W4 1QP
020 8987 3000
chiswicksales@fletcherestates.com

Energy Rating: D We aim to make our particulars both accurate and reliable. However they are not guaranteed; nor do they form part of an offer or contract. If you require clarification on any points then please contact us, especially if you're traveling some distance to view. Please note that appliances and heating systems have not been tested and therefore no warranties can be given as to their good working order