



Romney Mews, W1U 5DT
£1,250 Per Week

coop
OF LONDON EST. 1986

Romney Mews, W1U

- Available Now
- Lovely two double bedroom house
- Moments Marylebone High Street
- Fantastic location
- Separate fully fitted kitchen
- Patio and First floor terrace
- Furnished/Unfurnished
- Split over two floors

Available Now

Two bedroom house in this secluded, secret mews in the heart of Marylebone.

The property comprises of two double bedrooms, bathroom, large reception and separate kitchen.

The property further benefits from a patio area and first floor terrace. Romney Mews is located at the north end of Chiltern Street just moments from the amenities and transport links of Baker Street and A40 for motorists. The boutique shops and restaurants of Marylebone High Street and the open spaces of Regents Park are also within easy walking distance.

Available Now

Two bedroom house in this secluded, secret mews in the heart of Marylebone.

The property comprises of two double bedrooms, bathroom, large reception and separate kitchen.

The property further benefits from a patio area and first floor terrace. Romney Mews is located at the north end of Chiltern Street just moments from the amenities and transport links of Baker Street and A40 for motorists. The boutique shops and restaurants of Marylebone High Street and the open spaces of Regents Park are also within easy walking distance.



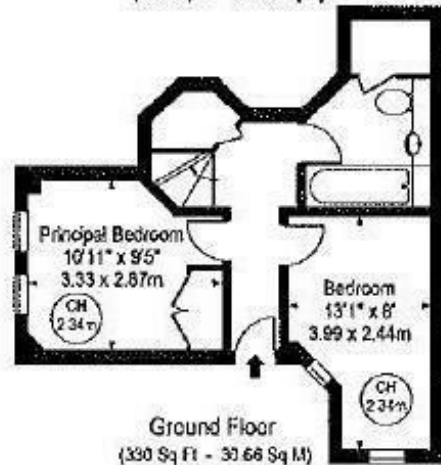


Romney Mews

Approx. Gross Internal Area 635 Sq Ft - 58.99 Sq M
 Approx. External Area Of Balcony 76 Sq Ft - 7.06 Sq M



First Floor
 (395 Sq Ft - 36.34 Sq M)



Ground Floor
 (330 Sq Ft - 30.66 Sq M)

| Energy Efficiency Rating | Current | Potential |
|---------------------------------------------|-------------------------|-----------|
| Very energy efficient - lower running costs | | |
| (92 plus) A | | |
| (81-91) B | | |
| (69-80) C | | |
| (55-68) D | | |
| (39-54) E | | |
| (21-38) F | | |
| (1-20) G | | |
| Not energy efficient - higher running costs | | |
| England & Wales | EU Directive 2002/91/EC | 90 |

| Environmental Impact (CO ₂) Rating | Current | Potential |
|-----------------------------------------------------------------|-------------------------|-----------|
| Very environmentally friendly - lower CO ₂ emissions | | |
| (92 plus) A | | |
| (81-91) B | | |
| (69-80) C | | |
| (55-68) D | | |
| (39-54) E | | |
| (21-38) F | | |
| (1-20) G | | |
| Not environmentally friendly - higher CO ₂ emissions | | |
| England & Wales | EU Directive 2002/91/EC | |

Viewing

Strictly by appointment with:
 Coopers of London, 22 Cleveland Street,
 Fitzrovia, London W1T 4JB
info@coopersoflondon.co.uk

0207 580 9658

These particulars, whilst believed to be accurate are set out as a general outline only for guidance and do not constitute any part of an offer or contract. Intending purchasers should not rely on them as statements or representation of fact, but must satisfy themselves by inspection or otherwise as to their accuracy. No person in this firm's employment has the authority to make or give any representation or warranty in respect of the property.