

# HANNAH CARR

POWERED BY  
**exp** UK



**Fenhurst**

**Barham Road, Buckworth, PE28 5AP**

**FREEHOLD**

# Description

Nestled within the sought-after rural setting of Buckworth, this stunning two-bedroom detached bungalow occupies an exceptional plot of just under an acre, offering a rare blend of contemporary living and tranquil countryside surroundings.

Beautifully presented throughout, the property boasts a striking open-plan living space designed to maximise light and flow. The spacious lounge area features a charming log burner, creating a cosy focal point, while expansive bifold doors open seamlessly onto the garden, inviting the outdoors in and framing uninterrupted views across the mature grounds and adjoining woodland.

The modern kitchen and living spaces are thoughtfully arranged, perfect for both everyday living and entertaining, with high-quality finishes enhancing the sleek, contemporary feel of the home.

Both bedrooms are generously proportioned, with the principal suite offering a luxurious retreat complete with its own log burner, ensuite, walk-in wardrobe and direct access to the garden through bifold doors—an ideal spot to enjoy peaceful mornings overlooking the natural surroundings.

Externally, the property truly excels. The extensive plot is predominantly laid to mature garden and woodland, providing privacy, beauty, and a haven for wildlife. A substantial cabin sits within the grounds, offering versatile use as a workshop, studio, or home office—perfect for those seeking flexible space.

Backing onto open fields, the property enjoys uninterrupted rural views, while ample off-road parking adds further convenience.

This is a unique opportunity to acquire a beautifully finished home in a picturesque setting, combining modern comfort with the charm and serenity of countryside living.

## Features

- ✓ Modern Detached Bungalow
- ✓ Log Burners
- ✓ Mature Gardens and Woodland
- ✓ Generous Cabin/Workshop
- ✓ Just Under an Acre Plot
- ✓ Gorgeous Open Plan Living
- ✓ Peaceful, Rural Village Setting

## Quick Summary

**Property Type:** Detached Bungalow

**Bedrooms:** 2

**Bathrooms:** 2

**Reception Rooms:** 1

**Council Tax Band:** D



To request a viewing please get in touch:



**07815 568624**



**[hannah.carr@exp.uk.com](mailto:hannah.carr@exp.uk.com)**

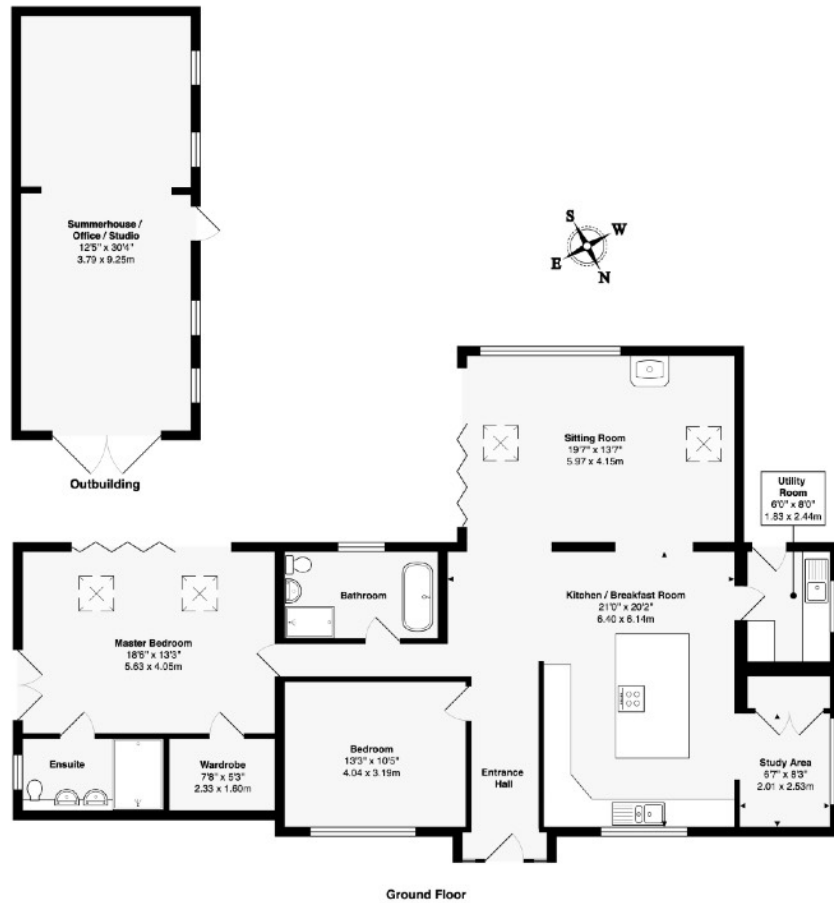
**[www.hannahcarr.exp.uk.com](http://www.hannahcarr.exp.uk.com)**











Approximate Area: 1465 ft<sup>2</sup> ... 136.1 m<sup>2</sup> (excluding summerhouse / office / studio)

Approximate Area of Outbuilding: 378 ft<sup>2</sup> ... 35.1 m<sup>2</sup>

**Total Approximate Area: 1843 ft<sup>2</sup> ... 171.2 m<sup>2</sup>**

Floor plans are for layout purposes only and are not intended to be scale drawings. All measurements, including window and door openings are approximate and should not be relied upon for valuation purposes. Please check all dimensions, shapes & compass bearings before making any decisions reliant upon them. MK Property Photography accepts no liability whatsoever for any error or omission or inadvertent mis-statement in a floor plan.

Copyright MK Property Photography | www.mkpp.co.uk

Score	Energy rating	Current	Potential
92+	<b>A</b>		<b>97 A</b>
81-91	<b>B</b>		
69-80	<b>C</b>	<b>69 C</b>	
55-68	<b>D</b>		
39-54	<b>E</b>		
21-38	<b>F</b>		
1-20	<b>G</b>		