



22 Knowle Place
, Longbenton, NE12 8JN

Offers In The Region Of £154,000

22 Knowle Place

, Longbenton, NE12 8JN



- Newly Decorated
- Sold as Vacant
- New Carpets
- Large front and rear Garden

3 BEDROOM FAMILY HOME** NO CHAIN*****

Nestled in the charming area of Knowle Place, Longbenton, this delightful Mid -Terraced three-bedroom house offers a perfect blend of comfort and convenience. Ideal for First Time Buyers, families or professionals seeking a peaceful retreat, the property boasts a welcoming atmosphere and ample living space.

As you step inside, you will find a well-designed layout that maximises both space and light. The living areas are inviting, providing a perfect setting for relaxation or entertaining guests. The kitchen/ dining room is functional and well-equipped, with the advantage of a small offset utility room

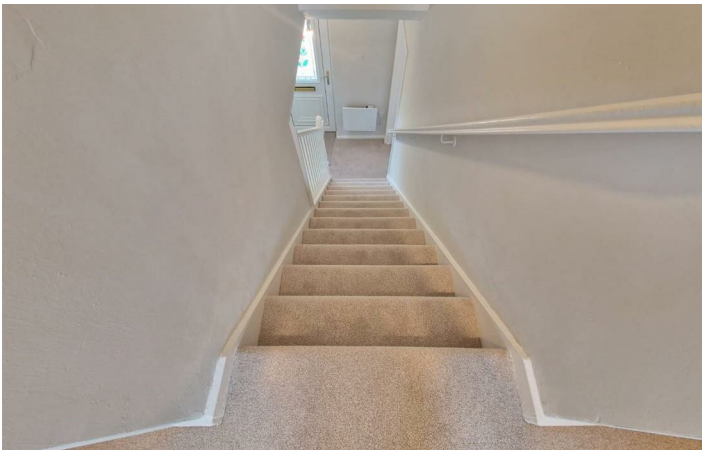
The three bedrooms are generously sized, offering plenty of room. There is a separate W.c and Family bathroom with a shower over the bath.

The property also benefits from well-maintained outdoor space, perfect for enjoying the fresh air or hosting summer barbecues.

Located in Longbenton, this home is conveniently situated near local amenities, including shops, schools, and parks, making it an ideal choice for families. Excellent transport links ensure easy access to nearby areas, enhancing the appeal for those commuting to work or exploring the wider region.

In summary, this three-bedroom house in Knowle Place is a wonderful opportunity for anyone looking to settle in a friendly community with all the necessary conveniences at hand. With its charming features and prime location, this property is not to be missed.

****Some of the rooms/externals have been digitally staged to give potential buyers the opportunity to see what this property would look like with furniture*****

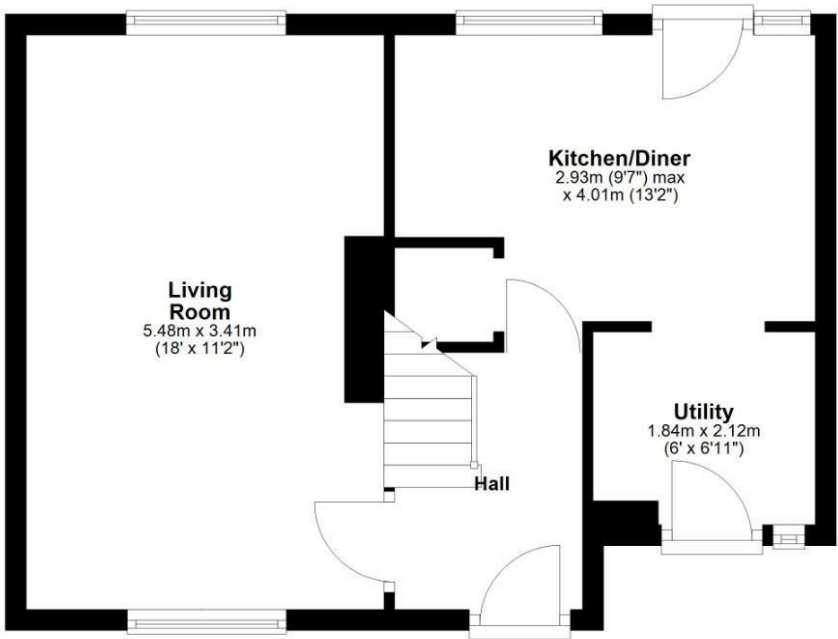




Floor Plan

Ground Floor

Approx. 39.4 sq. metres (424.3 sq. feet)



Total area: approx. 80.8 sq. metres (869.7 sq. feet)

Whilst every attempt has been made to ensure the accuracy of the floor plan contained here, measurements of doors, windows, rooms and any other items are approximate and no responsibility is taken for any error, omission, or mis-statement. The Plan is for illustrative purposes only. Version 1

Plan produced using PlanUp.

These particulars, whilst believed to be accurate are set out as a general outline only for guidance and do not constitute any part of an offer or contract. Intending purchasers should not rely on them as statements of representation of fact, but must satisfy themselves by inspection or otherwise as to their accuracy. No person in this firms employment has the authority to make or give any representation or warranty in respect of the property.

