

25 Marlborough Buildings , Bath, BA1 2LY  
Offers In Excess Of £475,000







# 25 Marlborough Buildings

Bath, BAI 2LY

- A Georgian lateral conversion
- Two luxury bath/shower rooms
- Close to Royal Victoria Park
- approx 1105 sq ft
- No onward chain
- Three double bedrooms
- Prime location
- Fabulous views
- Grade II Listed

A stunning lateral apartment adjacent to Royal Crescent on the top floor of this Bath stone property offering the finest in Georgian living. Rich in period detail yet enhanced with modern comforts, it delivers an exceptional blend of elegance and practicality.

The spacious accommodation features an entrance hall leading to an impressive drawing room with an adjoining dining area, and a well-appointed kitchen/breakfast room. The principal bedroom benefits from fitted wardrobes, complemented by two further generously sized bedrooms. A luxurious bathroom and a separate shower room complete the accommodation.

Enjoying superb views to both the front and rear, this remarkable apartment represents a rare opportunity to reside in one of Bath's most sought-after addresses.

Offered with no onward chain.



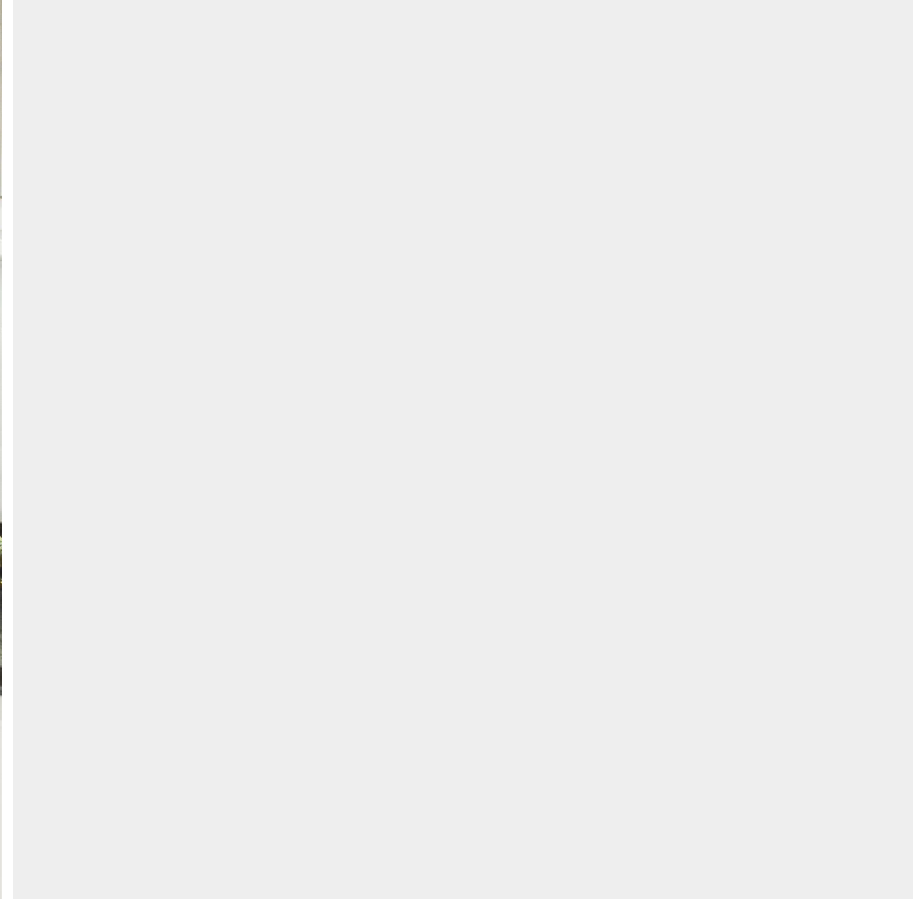
Description

Location

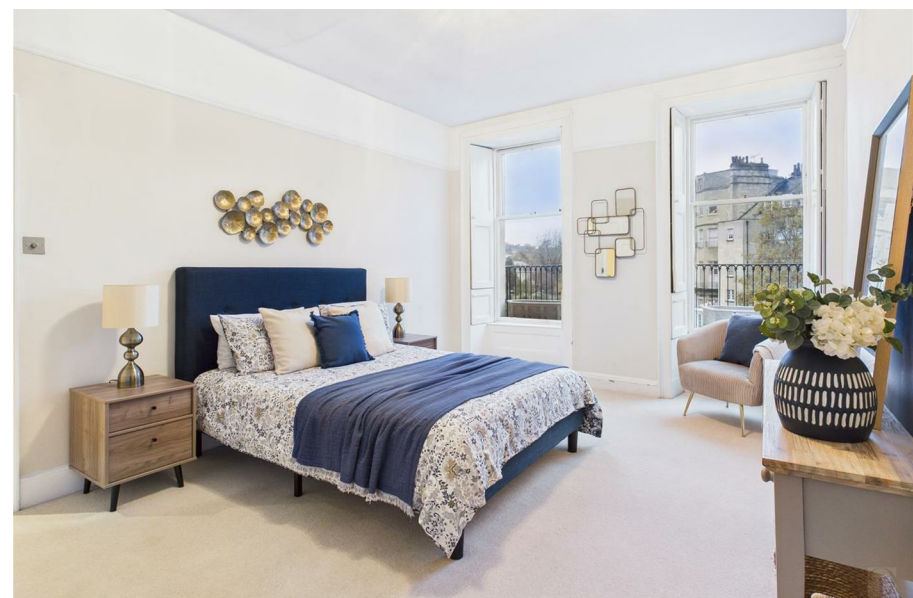
Key information







Directions

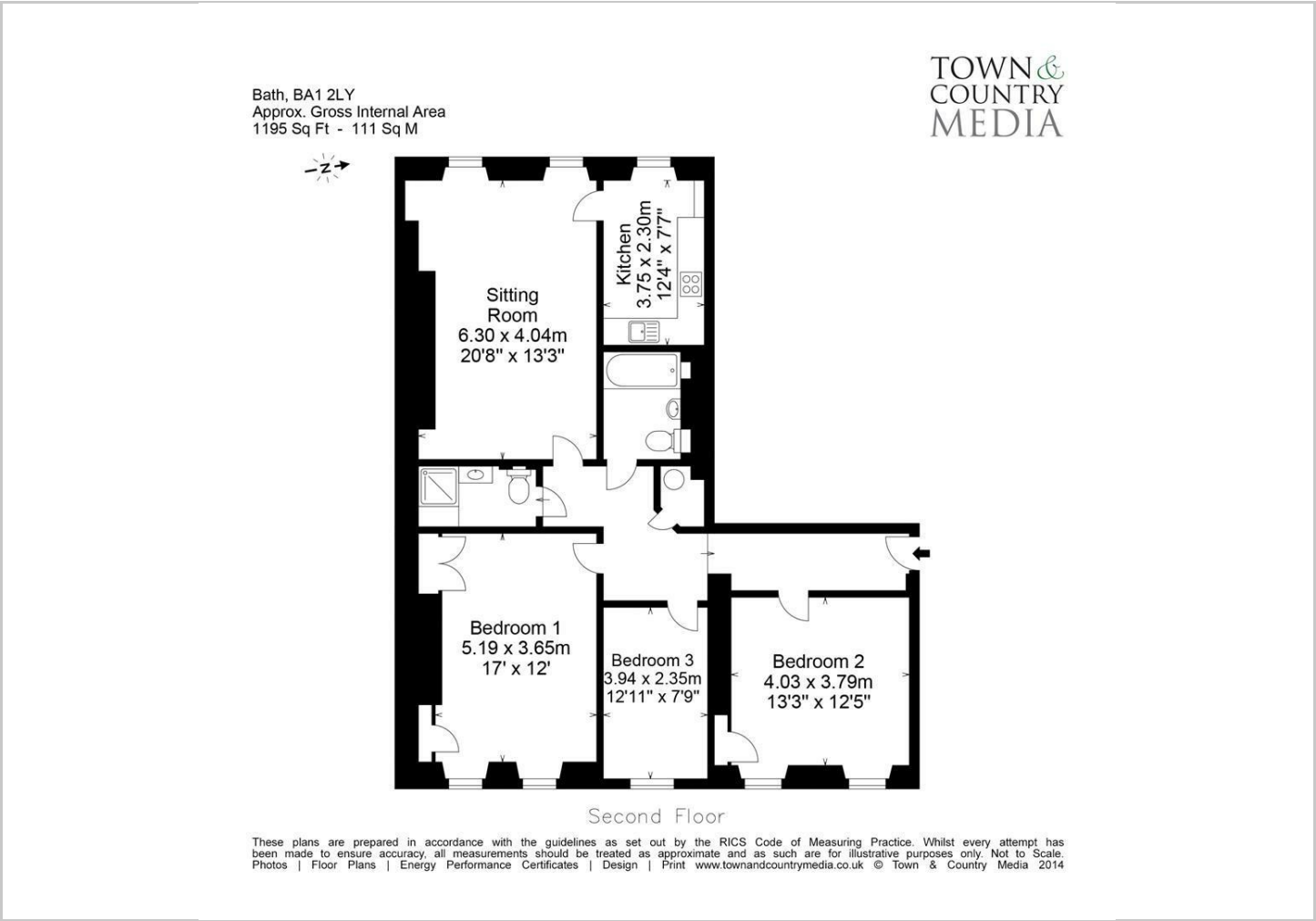








Floor Plans

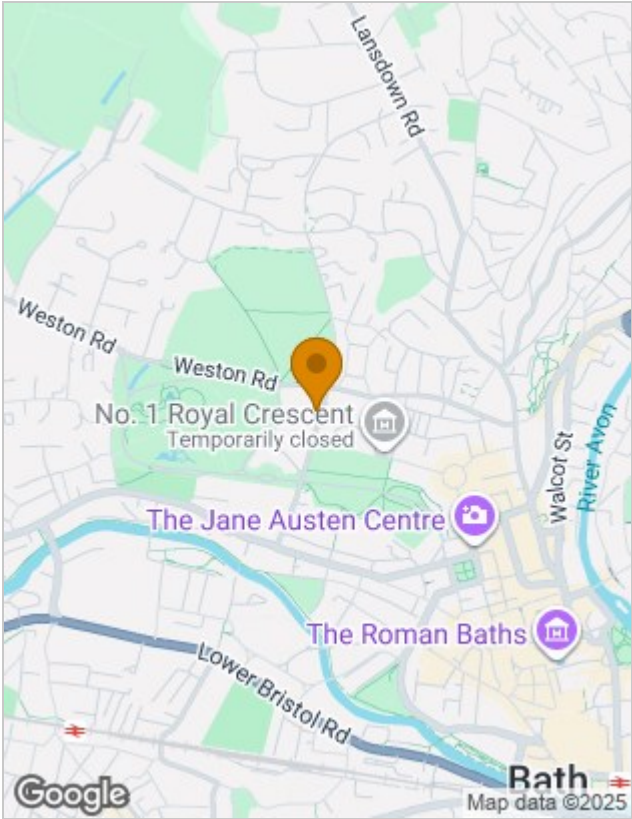


Viewing

Please contact our Bath Office on 01225 904999 if you wish to arrange a viewing appointment for this property or require further information.

The particulars are set out as a general outline only for the guidance of intended purchasers or lessees, and do not constitute, any part of a contract. Nothing in these particulars shall be deemed to be a statement that the property is in good structural condition or otherwise nor that any of the services, appliances, equipment or facilities are in good working order. Purchasers should satisfy themselves of this prior to purchasing.

Location Map



Energy Performance Graph

