

Waldeck Road, W13

£630,000

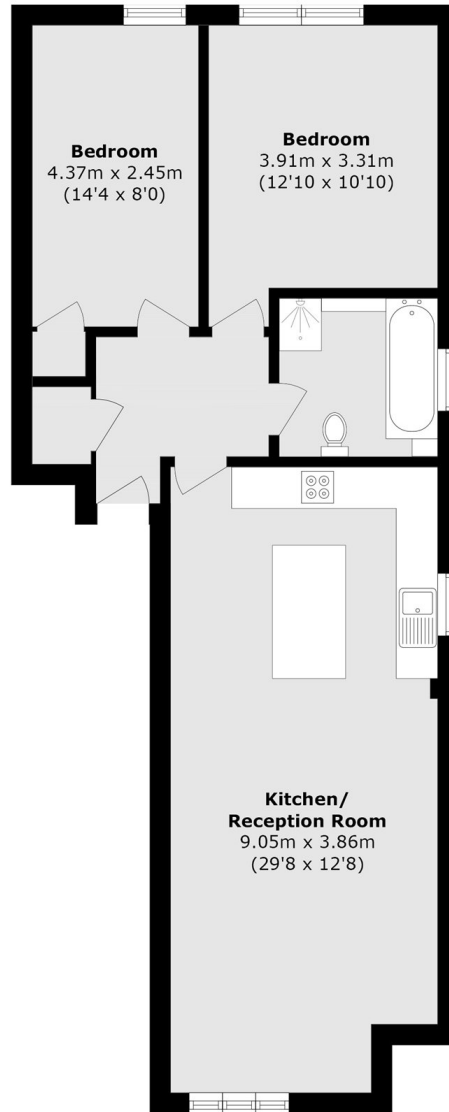
This beautifully modernised two-bedroom first-floor apartment is presented in turnkey condition, offering stylish and comfortable living throughout. The property benefits from private gated parking and well-maintained communal gardens to the rear, providing a peaceful outdoor space for residents.

Situated on a quiet residential road, just 0.3 miles from West Ealing station, the property offers excellent transport links via the Elizabeth Line, providing fast connections across London and out to Heathrow and beyond. The area is also well-served by a selection of highly regarded local schools nearby.

Features

- Two Double Bedrooms
- First Floor
- Modernised
- Gated Parking
- Communal Gardens
- Elizabeth Line

Waldeck Road, London, W13



Total area (approx.): 71.9 sq. m (773.9 sq. ft)