



Guide Price
£325,000

Freehold

3x  1x  1x 

**Betsham Road,
Maidstone, Kent, ME15**

OVER 60?

Secure this property
for up to **59% less!**

Wards
Helping you move forwards



Main features

- Large front drive leading to garage
- Good size open-plan lounge/diner
- Landscaped rear garden, ideal for hosting friends and family
- Short distance to local amenities
- Easy drive to M20 motorway, ideal for road commuters

Accommodation

GROUND FLOOR

Entrance Hall: 17'8 x 2'10 (5.39m x 0.86m)

Kitchen: 9'4 x 8'4 (2.85m x 2.54m)

Lounge/Diner: (L-shaped) 23'9 x 8'9 (7.24m x 2.67m) plus 13'9 x 2'7 (4.19m x 0.79m)

FIRST FLOOR

Landing

Bedroom 1: (L-shaped) 13'11 x 8'9 (4.24m x 2.67m) plus 2'1 x 2'7 (0.64m x 0.79m)

Bedroom 2: (L-shaped) 9'5 x 8'9 (2.87m x 2.67m) plus 2'10 x 2'7 (0.86m x 0.79m)

Bedroom 3: 8'8 x 6'7 (2.64m x 2.01m)

Bathroom: 8'8 x 5'7 (2.64m x 1.70m)

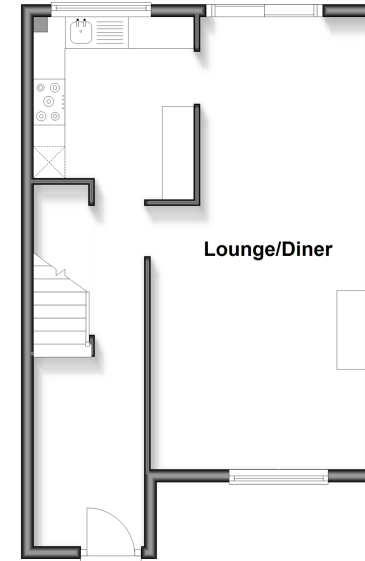
OUTSIDE

Front and Rear Gardens

Garage and Driveway

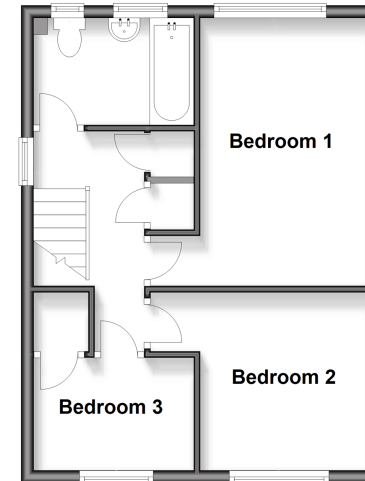
Ground Floor

Approx. 438.8 sq. feet



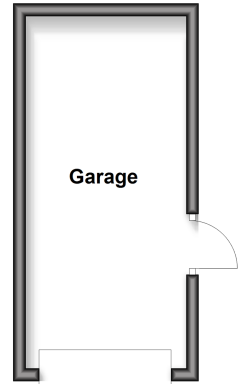
First Floor

Approx. 415.6 sq. feet



Outbuilding

Approx. 156.7 sq. feet



Call Bearsted - 01622 730955 ■ wardsofkent.co.uk

- Legal advice should be taken to verify fixtures/fittings, planning, alterations and/or lease details
- Appliances & services are untested, dimensions are approximate and floor plans are not to scale
- Through a Homewise Home For Life Plan people aged 60+ can secure this property for up to 50% less, by purchasing a Lifetime Lease.



12329257/20250923/DF/LNR