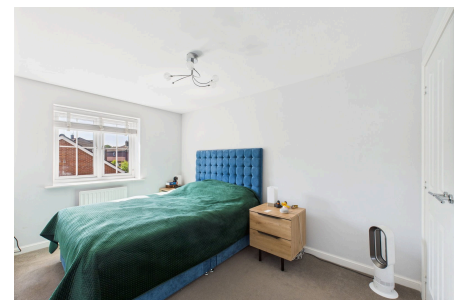


Roman Lane, Southwater

Guide Price £400,000

3 1 1



A beautifully presented Three Bedroom Family Home, offering spacious Open Plan Living, Private West Facing Garden, Allocated Parking as well as a 19ft Detached Garage.

Tenure: Freehold

Council Tax: Band D

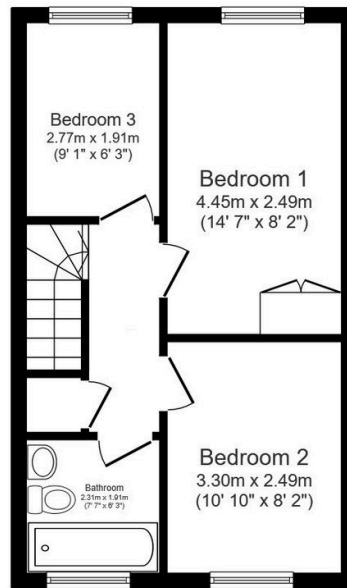
EPC Rating: Current C - Potential B

Key Features

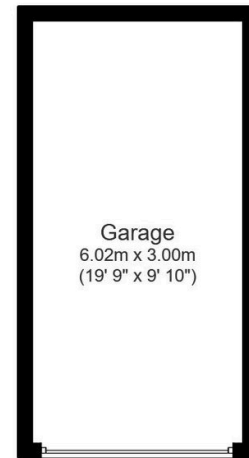
- Watch Our Video Tour
- 19ft Detached Garage
- Stunning Fitted Kitchen
- Popular Village Setting
- Downstairs WC
- Three Generous Bedrooms
- Allocated Parking
- 15'3" x 14'9" Open Plan Living Room
- Private West Facing Garden
- Modern Bathroom



Ground Floor
Floor area 35.3 sq.m. (380 sq.ft.)



First Floor
Floor area 35.3 sq.m. (380 sq.ft.)



Garage
Floor area 18.0 sq.m. (194 sq.ft.)

Total floor area: 88.6 sq.m. (953 sq.ft.)

This floor plan is for illustrative purposes only. It is not drawn to scale. Any measurements, floor areas (including any total floor area), openings and orientations are approximate. No details are guaranteed, they cannot be relied upon for any purpose and do not form any part of any agreement. No liability is taken for any error, omission or misstatement. A party must rely upon its own inspection(s). Powered by www.Propertybox.io