



ICONIC  
ESTATE AGENTS

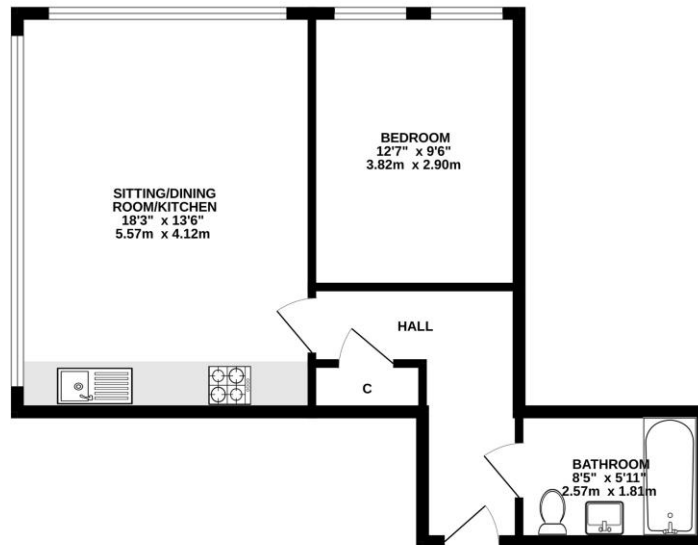
St. Peter's House, Cattle Market Street, Norwich  
OIEO £140,000 - Leasehold



- Modern Ground Floor Apartment
- One Double Bedroom
- Open Plan Living Space With Underfloor Heating
- Modern Bathroom Suite
- Hall Entrance With Storage Cupboard
- Located In The Heart Of Norwich City Centre
- Secure Lobby Entrance
- Offered With No Onward Chain
- Call Now To View
- EPC Rating D / Council Tax Band B



GROUND FLOOR  
497 sq.ft. (46.2 sq.m.) approx.



TOTAL FLOOR AREA: 497 sq.ft. (46.2 sq.m.) approx.

Whilst every attempt has been made to ensure the accuracy of the floor plan contained here, measurements of doors, windows, rooms and any other items are approximate and no responsibility is taken for any error, omission or mis-statement. This plan is for illustrative purposes only and should be used as such by any prospective purchaser. The services, fixtures and appliances shown have not been tested and no guarantee is to be made for their condition or fitness for use. Made with Lettoplan 6.0.2025

Agents Notes: 146 years and 6 months remain on the lease. Service charge is £90 per month. Ground rent is £13 per month.

Viewings strictly by appointment with: 297 Fakenham Road, Norwich, NR8 6LE

Taverham **01603 261104**  
Norwich **01603 740044**



We bring to prospective purchasers attention that we, as estate agents for the property, have not tested any appliances and purchasers should make their own enquiries of the relevant Authorities regarding the connection and viability of all services. These particulars, whilst believed to be accurate are set out as a general outline only for guidance and do not constitute any part of an offer or contract. Intending purchasers should not rely on them as statements of representation of fact, but must satisfy themselves by inspection or otherwise as to their accuracy.