



VILLAGE ESTATES



• EST.1993 •

93 Main Road, Sidcup, Kent DA14 6ND

Tel: 0208 302 1002

www.village-estates.com

Email: sidcup@village-estates.com



GROUND FLOOR APARTMENT

EN-SUITE SHOWER ROOM

PRIVATE PATIO AREA

TWO BEDROOMS

OPEN PLAN KITCHEN / LIVING AREA

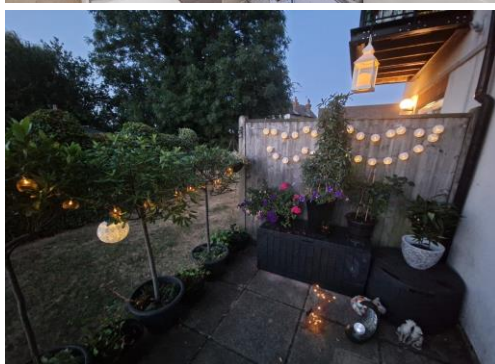
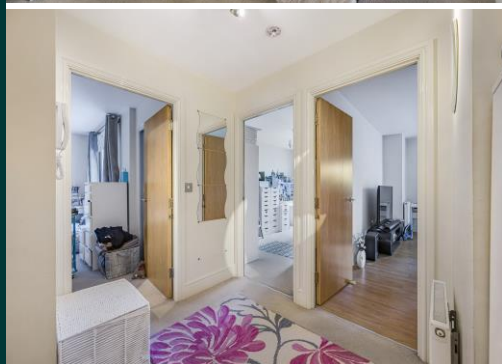
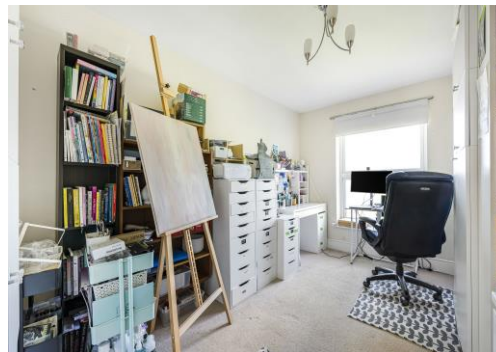
CLOSE TO ALL AMENITIES AND TRANSPORT LINKS



Flat 2 Kemnal Court
285 Main Road
Sidcup, DA14 6QL

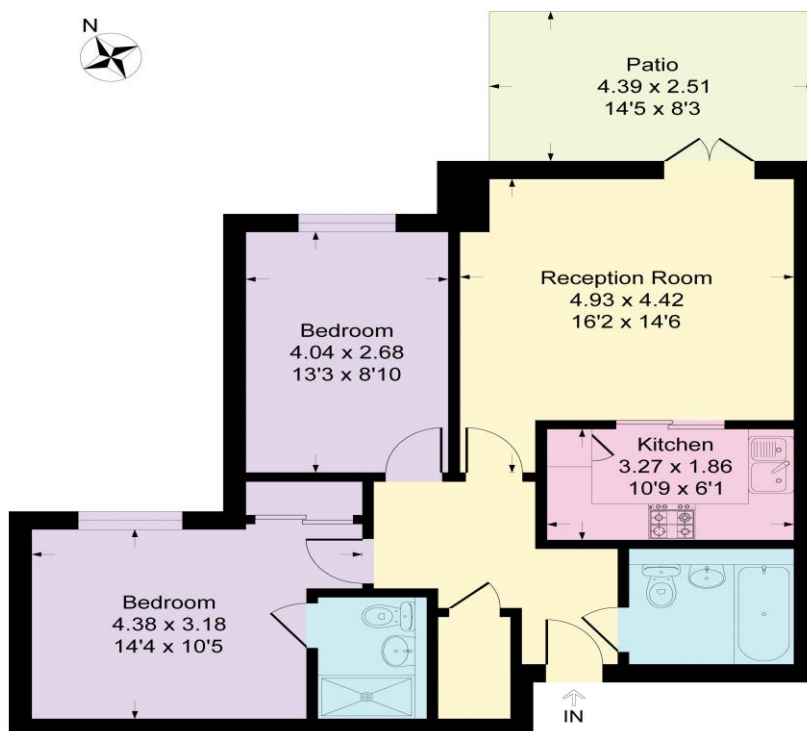
Guide Price £325,000 -
£350,000

TWO BEDROOM GROUND FLOOR APARTMENT WITH ITS OWN PRIVATE PATIO AREA! Village Estates are delighted to introduce this well - presented home, close to all local amenities. Providing a great amount of space, this property offers a stunning open plan living and kitchen area, with doors opening out onto its own private patio area, perfect for the summer months. There are two generous sized bedrooms, with the principal bedroom benefiting from its own ensuite shower room. The main bathroom has been carefully maintained to a great standard and is ready for the next owners. The property offers a great amount of storage, with an array of cupboard space and wide hallway. Allocated parking is situated to the rear of the building, ensuring there is always a space available. We highly recommend viewing this fantastic home.



Kemnal Court, DA14

Approximate Gross Internal Area 68.8 sq m / 741 sq ft



CONSUMER PROTECTION FROM UNFAIR TRADING REGULATIONS 2008

Please note that any services, heating system or appliances have not been tested, and no warranty can be given or implied as to their working order. You are advised to obtain verification from your solicitor or surveyor. References to the tenure of a property are based on information supplied by the seller. We have not had sight of the title documents and a buyer is advised to obtain verification from their solicitor. Items shown in photographs are not included unless specifically mentioned within the sales particulars, but may be available by separate negotiation. Whilst every attempt has been made to ensure the accuracy of the floor plan contained here, measurements of doors, windows, rooms and any other items are approximate and no responsibility is taken for any error, omission, or mis-statement. We advise you to book an appointment to view before embarking on any journey to see a property, and check its availability. The accuracy of these details are not guaranteed and they do not form part of the contract.