

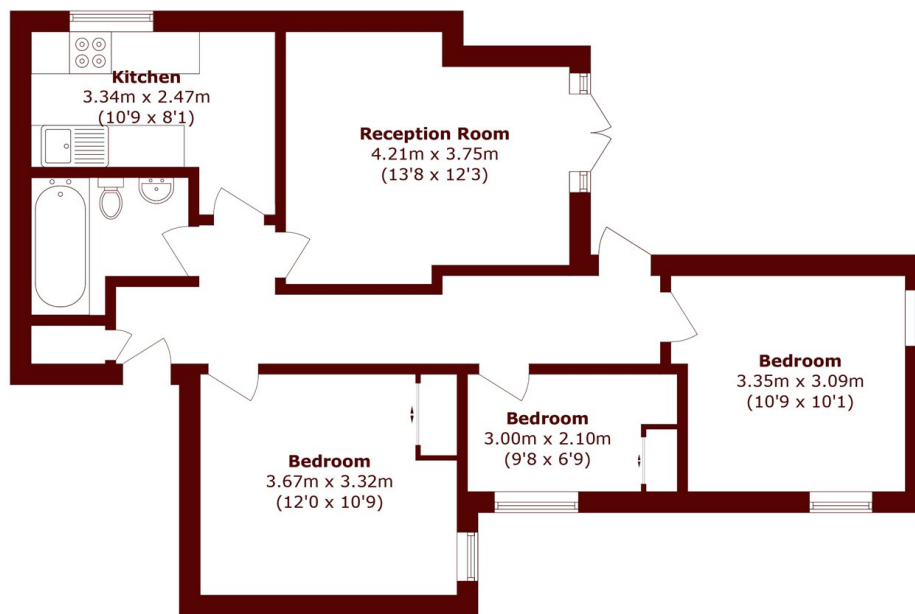


Shoot Up Hill, NW2

£470,000



- Three bedrooms
- Private garden
- Period conversion
- Arranged over 706sqft
- Close to transport links
- Separate reception room



Total area (approx.): 65.6 sq. m (706.1 sq. ft)

Marsh & Parsons Willesden Green

291-293 Willesden Lane,
London, NW2 5HY
020 8451 0420