

# Towers Wills

Town & Country

📞 01935 577 032 | 01460 298 530 | ✉ info@towerswills.co.uk



**29, Southfield Drive, Yeovil, Somerset BA21 3FJ**

**£400,000**

Towers Wills welcome to the market a beautifully presented three double bedroom home situated within the sought-after Brimsmore development. Built in 2017 by Wyatt Homes, the property offers spacious, versatile accommodation over three floors, finished to a high specification throughout, including a modern fitted kitchen with quartz worktops and integrated appliances, feature lounge diner, versatile family room/ reception room, en suite to the master bedroom, two further double bedrooms, luxurious bathroom, landscaped low-maintenance garden, driveway and garage.

### Accommodation:

Situated within the highly sought-after Brimsmore development on the north western fringe of Yeovil, Southfield Drive is an impressive contemporary home built in 2017 by Wyatt Homes, a development renowned for its high specification, quality craftsmanship and attractive modern design. Arranged over three spacious floors, the property has been thoughtfully designed to suit modern family living, offering versatile accommodation, stylish interiors and beautifully maintained outdoor space.

The welcoming reception hallway sets the tone for the home, leading through to a stunning fully fitted kitchen finished to an exceptional standard. A comprehensive range of contemporary wall, base and drawer units are complemented by beautiful quartz work surfaces and a stylish inset sink, whilst an extensive range of integrated appliances includes a fridge freezer, dishwasher, induction hob with cooker hood over, double electric oven and combination microwave.

The spacious lounge diner is undoubtedly a wonderful social space, enjoying an attractive outlook over the rear garden via a Juliet balcony and offering ample room for both comfortable seating and dining, ideal for entertaining family and friends alike.

To the lower ground floor, a versatile second reception room/family room enjoys French doors opening directly onto the landscaped rear garden, creating an excellent additional living area, playroom or home office space. A utility room and cloakroom WC further enhance the practicality of the accommodation.

To the first floor are three generous double bedrooms, the principal bedroom benefiting from three built-in double wardrobes and a luxurious en suite shower room. The remaining bedrooms are served by an equally stylish family bathroom fitted with a contemporary white suite.

### Outside:

Outside, the rear garden has been thoughtfully designed for ease of maintenance with artificial lawn and patio seating areas, together with gated side access, driveway parking and an integral garage.

Brimsmore remains one of Yeovil's most desirable residential developments, favoured for its quality homes, excellent amenities and convenient position for the town centre, schools and surrounding countryside.

## Key Features

- Immaculately Presented Throughout
- Sought-After Location
- Three Bedrooms
- Master En-suite
- Landscaped Garden
- Driveway & Garage

## Contact Us

### Towers Wills Estate Agents - Yeovil

114, Hendford Hill  
Yeovil

Somerset  
BA202RF

T: 01935 577032

E: [info@towerswills.co.uk](mailto:info@towerswills.co.uk)

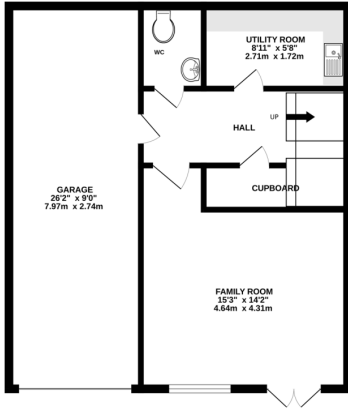
## Energy Efficiency

Score	Energy rating	Current	Potential
92+	A		93 A
81-91	B	85 B	
69-80	C		
55-68	D		
39-54	E		
21-38	F		
1-20	G		

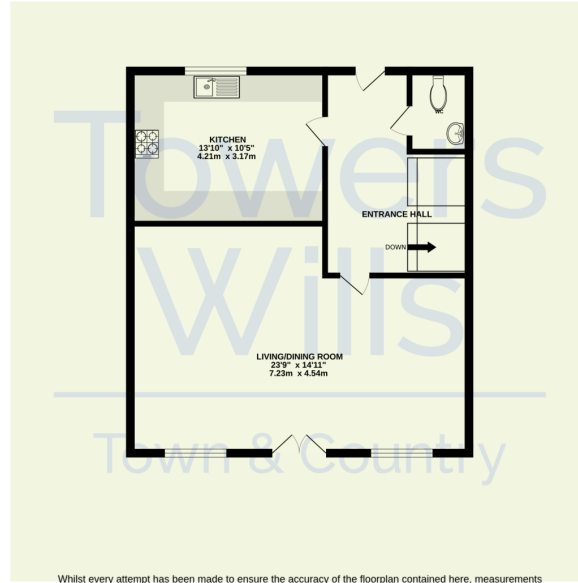


# Floor Plan

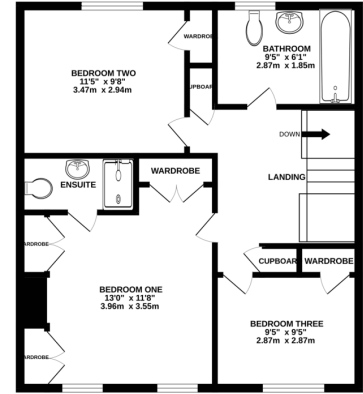
LOWER GROUND FLOOR



GROUND FLOOR



1ST FLOOR



Whilst every attempt has been made to ensure the accuracy of the floorplan contained here, measurements of doors, windows, rooms and any other items are approximate and no responsibility is taken for any error, omission or mis-statement. This plan is for illustrative purposes only and should be used as such by any prospective purchaser. The services, systems and appliances shown have not been tested and no guarantee as to their operability or efficiency can be given.  
Made with Metropix ©2026

Please Note No tests have been undertaken of any of the services and any intending purchasers should satisfy themselves in this regard. Towers Wills Ltd for themselves and for the vendor of this property whose agents they are, give notice that, (i) these particulars do not constitute any part of an offer or contract, (ii) all statements contained within these particulars are made without responsibility on the part of Towers Wills or the vendor, (iii) whilst made in good faith, none of the statements contained within these particulars are to be relied upon as a statement of representation or fact, (iv) any intending purchaser must satisfy him/herself by inspection or otherwise as to the correctness of each of the statements contained within these particulars, (v) the vendor does not make or give either Towers Wills or any person in their employment any authority to make or give representation or warranty whatsoever in relation to this property.

Photographs / Floor Plans Photographs are reproduced for general information and it must not be inferred that any item is included for sale with this property. Please note floor plans are not to scale and are for identification purposes only. The photographs used in these particulars may have been taken with the use of a wide angle lens. If you have any queries as to the size of the accommodation or plot, please address these with the agent prior to making an appointment to view