



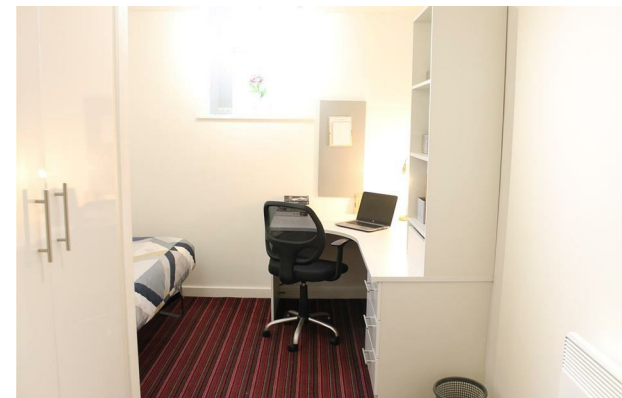
Oxford Street | | Leicester | LE1 5XA

£163 Per week



Oxford Street |  
Leicester | LE1 5XA  
£163 Per week

LEICESTER | STUDENT | SEPTEMBER



- Study space
- Bike storage
- High speed Wi-Fi
- Utilities including water and heating
- Strong community
- Upperton Road social spaces
- Onsite laundry facilities
- Contents insurance
- Excellent location
- Student only

Energy Efficiency Rating		Current	Potential
<i>Very energy efficient - lower running costs</i>			
(92 plus)	A		
(81-91)	B		
(69-80)	C		
(55-68)	D		
(39-54)	E		
(21-38)	F		
(1-20)	G		
<i>Not energy efficient - higher running costs</i>			
<b>England &amp; Wales</b>		EU Directive 2002/91/EC	

Lower Ground Floor  
27 Ridley Place  
Newcastle upon Tyne  
Tyne and Wear  
NE1 8JN  
0191 6403450  
info@propertybynest.co.uk