

£1,550 pcm

Tyron Way, Sidcup, Kent, DA14 6AZ



- **WELL PRESENTED 2 BEDROOM GROUND FLOOR APARTMENT**
- **GAS CENTRAL HEATING, DOUBLE GLAZING & NEUTRAL DECOR**
- **GOOD SIZE LOUNGE WITH WINDOW TO FRONT**
- **SPACIOUS KITCHEN / DINER**
- **2 X DOUBLE SIZE BEDROOMS**
- **MODERN FAMILY BATHROOM WITH OVERBATH SHOWER**
- **COMMUNAL GARDENS TO THE REAR**

To view all our homes: www.drewery.co.uk





WELL PRESENTED 2 BEDROOM GROUND FLOOR APARTMENT: UNFURNISHED

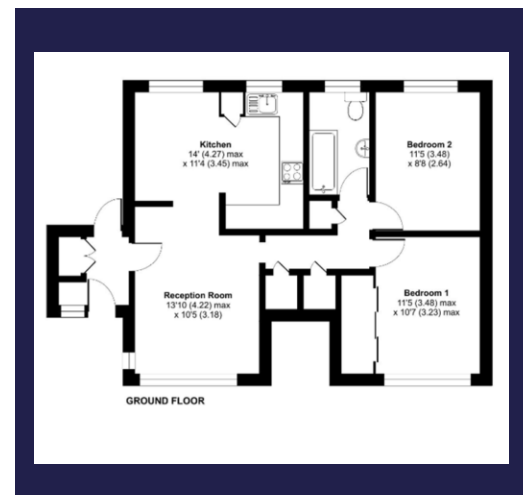
A well presented 2 bedroom ground floor maisonette. Situated in a popular residential location and close to all local amenities including: Sidcup high street, shops, schools, bus routes and within a short distance of Sidcup Station.

The property benefits from gas central heating, double glazing and a neutral décor throughout.

The accommodation comprises: Entrance porch with door to patio and communal gardens. Good size lounge with window to front. Spacious kitchen / diner with a range of wall and base units, work surfaces, sink with drainer and freestanding cooker. 2 x double size bedrooms (the master bedroom having built in wardrobes). Modern family bathroom with hand basin, bath with overbath shower and W.C. Externally there is a low maintenance paved garden to the rear.

Available early May.

Restrictions: no pets, smokers, students or sharers.



Energy Efficiency Rating D.
(64/78) EIR 0/0

If you would like to view please contact Drewery Property Consultants on **020 8269 6600**

These particulars are intended to give a fair description of the property but their accuracy cannot be guaranteed. Intending tenants should not rely on them as statements of representation of fact, but must satisfy themselves by inspection or otherwise as to their accuracy. All measurements quoted are approximate. None of the appliances/services have been tested by ourselves.

*Important -Admin fees apply per applicant. Please visit our website www.drewery.co.uk (information for tenants - Fees & other costs) or contact our staff.