



## PRAIRIE STREET, SW8

£575,000

- Victorian
- Two bedrooms
- Private garden
- Share of freehold
- Well presented
- Energy rating: C





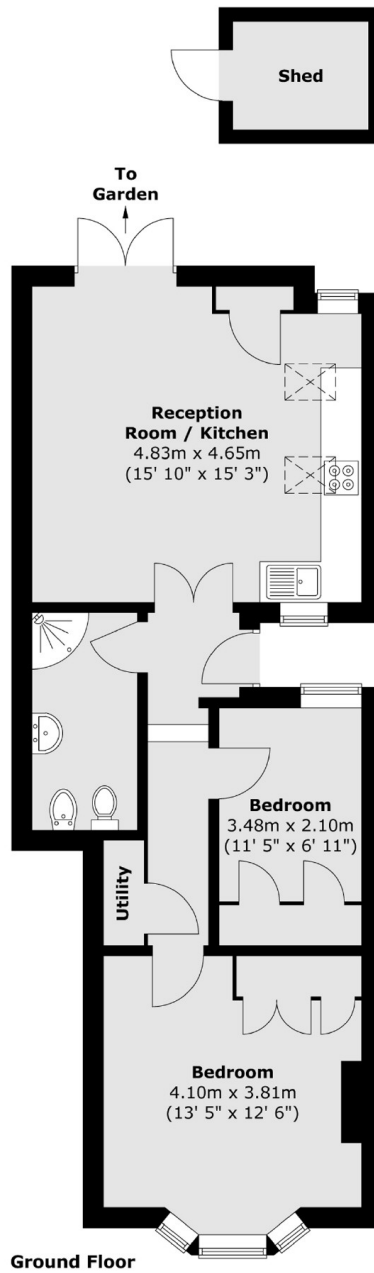
## ABOUT THE HOME

A superb example of a two double bedroom Victorian ground floor maisonette with a private garden, located in the ever popular Diamond Conservation area just off of Queenstown Road.

Located in the highly sought after Queenstown Diamond Conservation Area, the property is equidistant to Clapham Common and Battersea Park. Transport links are excellent with the exciting Battersea Power Station development and its Zone 1 tube station (Northern Line) nearby, offering 15 minutes travel to the City and West End. Other options include Queenstown Road (to Waterloo), Battersea Park (to Victoria), Wandsworth Road (Overground) and Clapham Junction (SWT, Southern and Overground).







Total area (approx.) : 57.8 sq. m (622 sq. ft)

**JACKSONS CLAPHAM**

73 Abbeville Road, London,  
SW4 9JN  
Sales: 020 8487 3177  
Lettings: 020 8487 3178

Energy Rating: C We aim to make our particulars both accurate and reliable. However they are not guaranteed; nor do they form part of an offer or contract. If you require clarification on any points then please contact us, especially if you're traveling some distance to view. Please note that appliances and heating systems have not been tested and therefore no warranties can be given as to their good working order.