



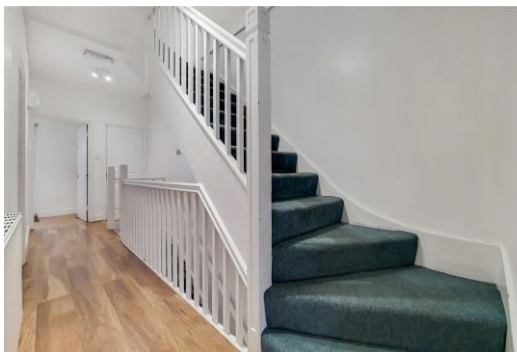
Finchley Road

Hampstead, NW3

£3,700 per month
(£853.85 per week)

VIDEO TOUR AVAILABLE. A lovely 3/4 bedroom maisonette offering plenty of storage and a balcony situated in this excellent location walking distance to the shops and amenities of Hampstead (Northern Line) and Finchley & Frognal (Overground).

CHESTERTONS



Finchley Road

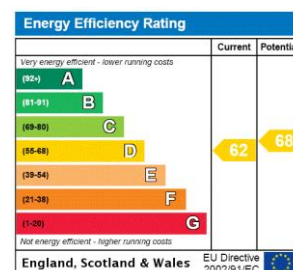
Hampstead, NW3

- A Lovely Maisonette in Period Conversion
- 3/4 Bedrooms, 2 Bathrooms, Reception, Kitchen
- Balcony, Plenty of Storage, Shower Room
- Walking Distance to the Shops/Amenities of Hampstead (Northern Line) and Finchley & Frognal (Overground)



VIDEO TOUR AVAILABLE. A lovely 3/4 bedroom maisonette offering plenty of storage and a balcony. The property is situated in this excellent location walking distance to the shops and amenities of Hampstead (Northern Line) and Finchley & Frognal (Overground). Accommodation comprises entrance on the ground floor 1st floor: reception room, bedroom, fully fitted kitchen with direct access to the balcony, 2nd floor: 2 double bedrooms, family bathroom, shower room.

Minimum Term: 12 months
Deposit Required: £4,269.23
Local Authority: London Borough Of Camden
Council Tax Band: E
EPC Rating: D
Furnished



Chestertons Hampstead Lettings

55-56 Hampstead High Street
 Hampstead
 London
 NW3 1QH
hampsteadlettingsusers@chestertons.co.uk
 02077941125
chestertons.co.uk

Additional tenant charges apply (fees apply to non-AST tenancies only)
 Tenancy Agreement Fee: £300
 References per Tenant/Guarantor: £60
 Inventory check (approx. £100 – £250 inc. VAT)
chestertons.co.uk/property-to-rent/applicable-fees



Finchley Road, NW3

CAPTURE DATE 14/02/2022 LASER SCAN POINTS 3,188,941

GROSS INTERNAL AREA

98.41 sqm / 1059.28 sqft



GROSS INTERNAL AREA (GIA)
The footprint of the property
98.41 sqm / 1059.28 sqft

NET INTERNAL AREA (NIA)
Excludes walls and external features
Includes washrooms, restricted head height
87.06 sqm / 937.11 sqft

EXTERNAL STRUCTURAL FEATURES
Balconies, terraces, verandas etc.
17.18 sqm / 184.92 sqft

RESTRICTED HEAD HEIGHT
Limited use area under 1.5 m
0.00 sqm / 0.00 sqft



Spec Verified floor plans are produced in accordance with Royal Institution of Chartered Surveyors' Property Measurement Standards. Plots and gardens are illustrative only and excluded from all area calculations. Due to rounding, numbers may not add up precisely. All measurements shown for the individual room lengths and widths are the maximum points of measurements captured in the scan.

IPMS 3B RESIDENTIAL 107.83 sqm / 1160.67 sqft
IPMS 3C RESIDENTIAL 104.86 sqm / 1128.70 sqft

SPEC ID 62069f526434cc0dc3879b83

