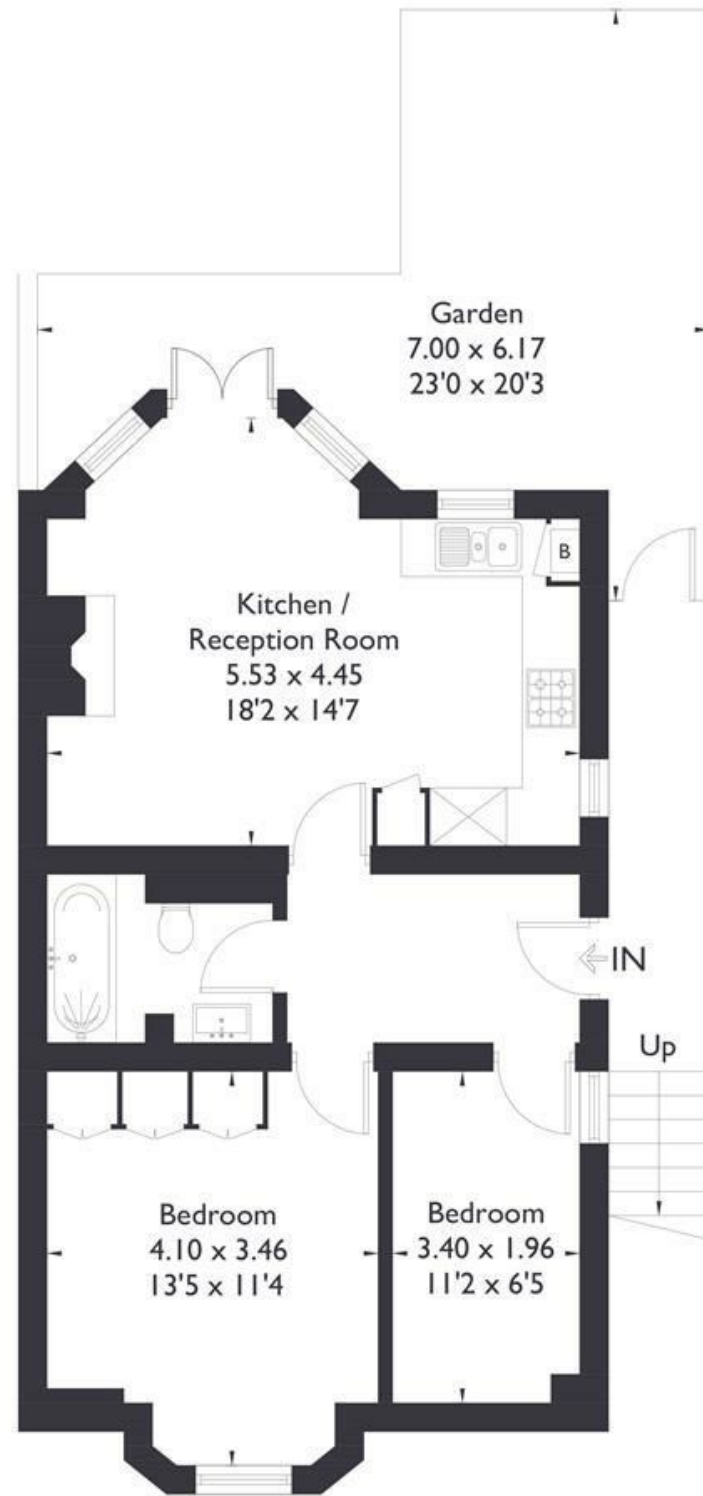


Lammas Park Road, W5 5JD

Approximate Floor Area = 54.8 sq m / 590 sq ft



Lower Ground Floor



FLAT

FEATURES

Lammas Park Road W5  
£2,150 PCM

FLAT

# Lammas Park Road W5

£2,150 PCM

This recently refurbished large two-bedroom garden flat has been tastefully updated to create a bright open living space and is situated in one of Ealing's most sought-after locations. Affording easy access to Lammas and Walpole parks And Ealing Broadway and South Ealing tube Stations. The property itself comprises a large master bedroom to the front, which has built in wardrobes. There is a further large single/office bedroom and family bathroom in the middle of the property with a contemporary overhead shower. The rear of the flat has a stunning open plan living room that leads to the fully fitted kitchen and dining area which provides access to the beautifully private rear patio garden, with the advantage of extra storage space. Other benefits include under floor heating and gas central heating.

